



# Holmesdale Road, Reigate

Guide Price £300,000 - £325,000





Occupying the entire top floor of the building, this apartment is an excellent opportunity for first-time buyers, downsizers, or those seeking a spacious pied-à-terre or investment property.





Guide Price £300,000 - £325,000

Conveniently located in the heart of Reigate, this impressive top floor apartment offers a wonderful balance of modern living and period character.

Originally built in 1900 and thoughtfully converted, the property spans over 940 square feet, occupying the entire top floor and providing an exceptional sense of space and privacy. Perfectly suited for individuals or couples, it combines comfort, convenience, and charm.

The apartment features a spacious open plan kitchen, living space with excellent natural light, creating a welcoming space for both relaxing and entertaining. The large double bedroom has built in storage, while the contemporary bathroom is fitted with modern fixtures and finishes.

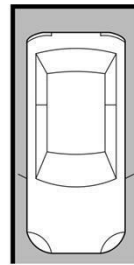
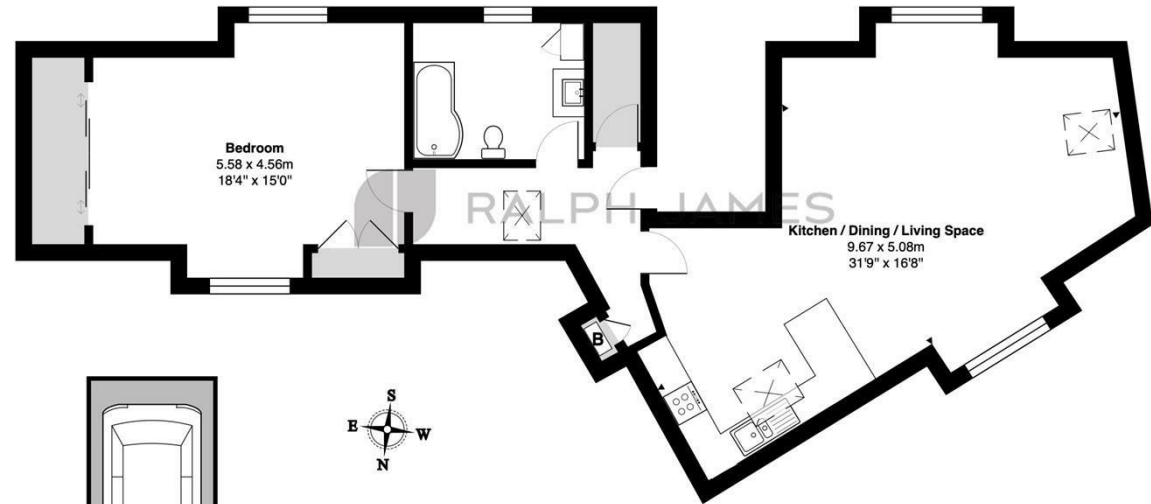
Additional benefits include off street parking for one vehicle and a large, shared lock-up basement storage area, a rare advantage for an apartment.

Situated just moments from Reigate Station, commuting into London and surrounding areas is easy, while Reigate's boutique shops and restaurants are all within a short walk. There is also a handy Co op near the station, perfect for grabbing supplies on the way home from work!



## Need to know

- Spacious top floor apartment, measuring over 940 sq ft
- One, large double bedroom with built in storage
- Open plan kitchen, living space
- Light and airy throughout with neutral decor
- Modern kitchen with built in appliances
- Communal basement storage area
- Allocated parking space
- Walking distance to central Reigate as well as a 30 second walk to Reigate station



1x Allocated Parking Space

### Second Floor

Devonshire House, Holmesdale Road, Reigate

Total Area: 87.3 m<sup>2</sup> ... 940 ft<sup>2</sup>

FOR ILLUSTRATIVE PURPOSES ONLY.

Whilst every attempt has been made to ensure the accuracy of the floor plan shown, all measurements, positioning, fixtures, features, fittings and any other data shown are an approximate interpretation for illustrative purposes only and are not to scale.

No responsibility is taken for any error, omission, miss-statement or use of data shown.

The above statement applies to both 'Still Moving London LTD' and the Company or individual displaying this floor plan.

Unauthorised reproduction prohibited.

Â© Still Moving London LTD (www.stillmoving.london)



## Interested?

reigate@ralphjames.co.uk

01737 333677

1

ralphjames.co.uk