



Apartment





**FLAT 2B, 21-25
HEADINGLEY AVE,
LEEDS, LS6 3EP**

Per Month

£850 Per

FEATURES



 1  1  0  c

SJM 
PROPERTIES

1 Bedroom Apartment located in Leeds

Modern Furnished Flat Near Headingley Stadium

This purpose-built furnished flat offers a blend of modern living and convenience, located just 2 minutes from Headingley Stadium.

Features:

Balcony

Open Plan Living: A spacious open plan lounge and kitchen area, perfect for contemporary living and entertaining. The lounge features elegant wood flooring.

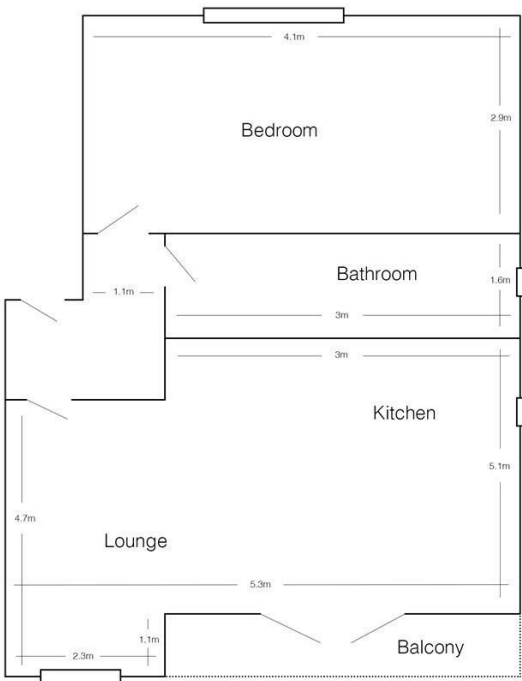
Modern Kitchen: Equipped with sleek kitchen units and a washing machine, catering to all your culinary needs.

Comfortable Bedroom: A double bedroom furnished with fitted furniture, including a desk and chair, providing ample storage and workspace.

Stylish Bathroom: A part-tiled bathroom featuring a shower-bath, combining functionality with style.

Year-Round Comfort:

The flat is gas central heated and double glazed throughout, ensuring comfort and energy efficiency.



Flat 2b, 21-25 Headingley Avenue
(drawing to scale)

Call us on

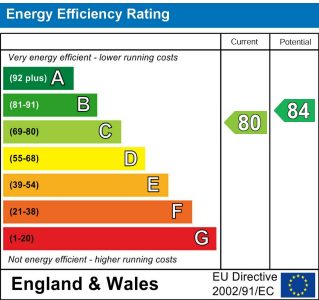
01132782201

phil@sjm-properties.com

sjm-properties.com

Council Tax Band

A



Agents Note: Whilst every care has been taken to prepare these particulars, they are for guidance purposes only. All measurements are approximate and are for general guidance purposes only and whilst every care has been taken to ensure their accuracy, they should not be relied upon and potential buyers are advised to recheck the measurements.

SJM [©]
PROPERTIES