



7, St. Johns Street, Hertford
SG14 1RX
Asking Price £675,000



stevenoates.com



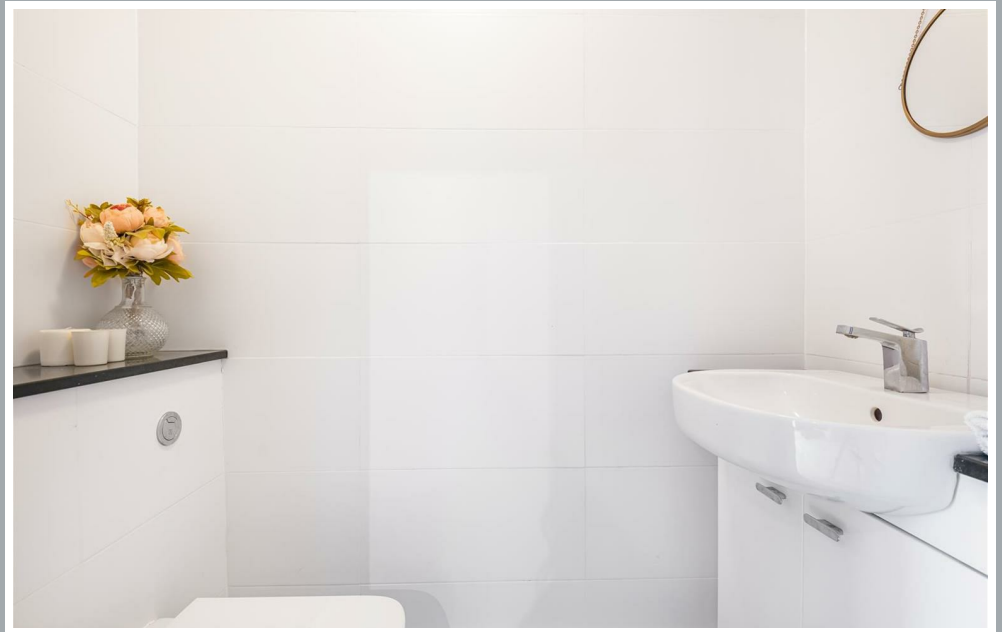
7 St. Johns Street, Hertford, Hertfordshire, SG14 1RX

An exceptional four-bedroom mid-terrace modern home, ideally situated in the heart of Hertford town centre. This highly desirable location offers convenient access to an excellent selection of shops, restaurants, parks, and mainline rail stations providing direct links into London. Arranged over three floors and extending to approximately 1,281 sq ft, the property offers stylish and impeccably presented accommodation throughout. The ground floor comprises a welcoming entrance hall, a guest cloakroom, a contemporary fitted kitchen, and a spacious 19ft living room with access to the rear garden. The first floor features two generous double bedrooms, including a principal bedroom benefiting from an en-suite shower room. The second floor provides two further well-proportioned bedrooms and a modern family bathroom. Externally, the property enjoys off-street parking to the front and a beautifully landscaped and low-maintenance rear garden.

Located within the heart of the historic town centre, the property is only a 'stones throw' away from all of the shops, coffee shops and restaurants Hertford has to offer. Hertford East train station is also a short distance away providing regular services to London's Tottenham Hale and Liverpool Street.



70 Fore Street, Hertford, Hertfordshire, SG14 1BY

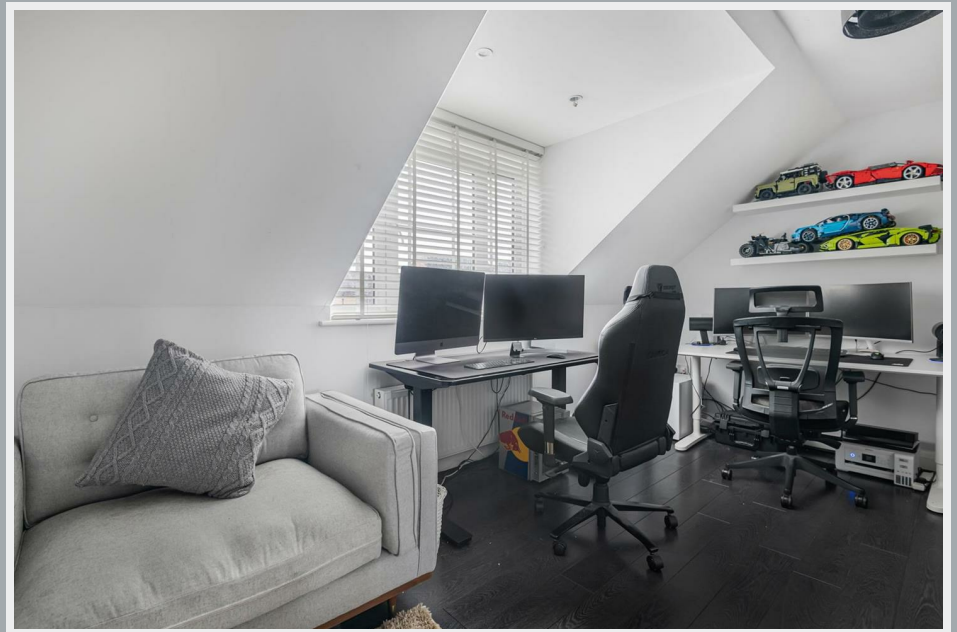
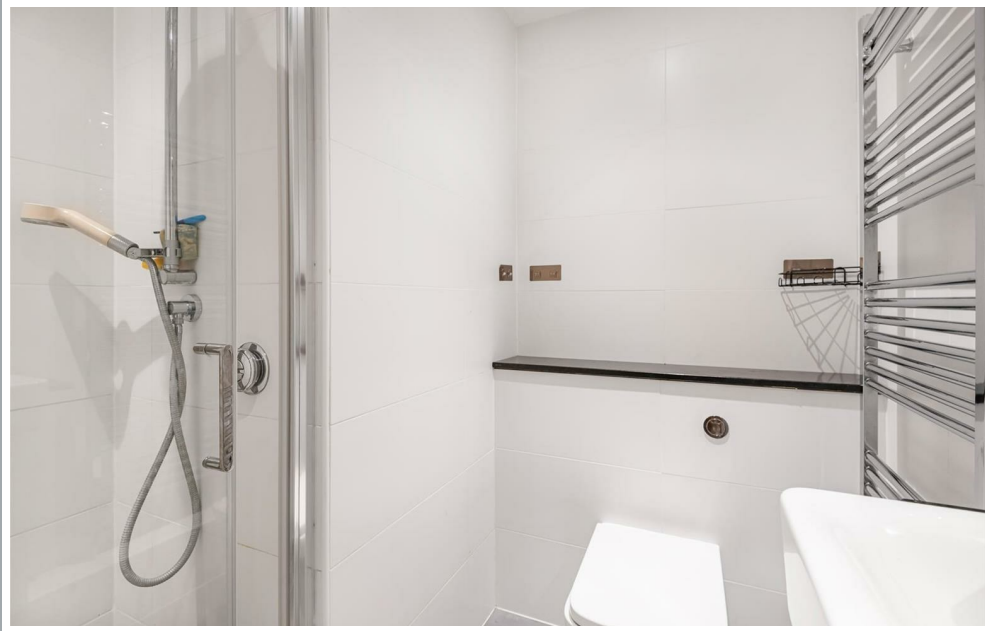


70 Fore Street, Hertford, Hertfordshire, SG14 1BY

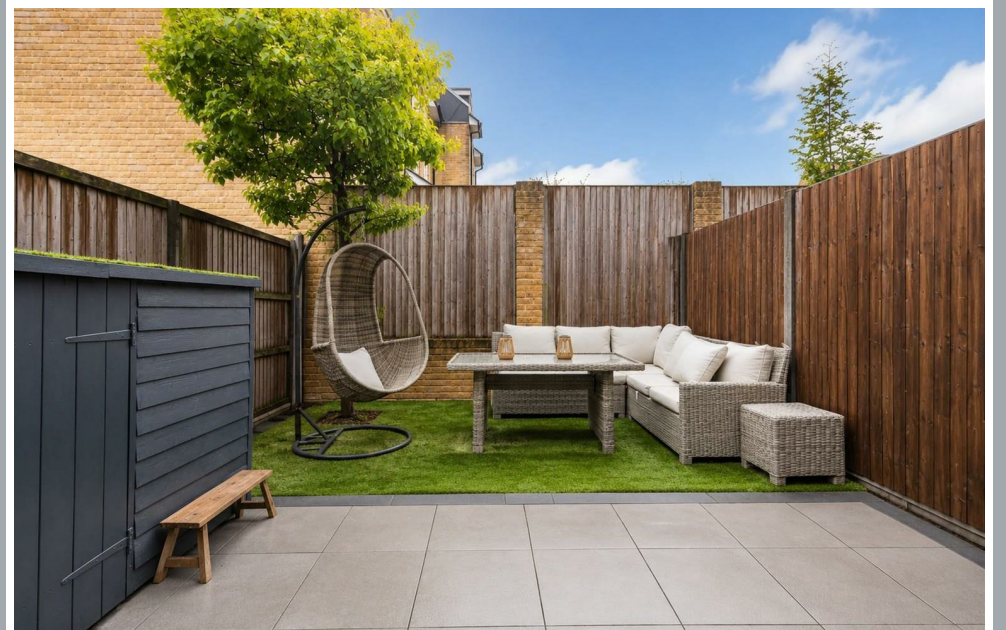
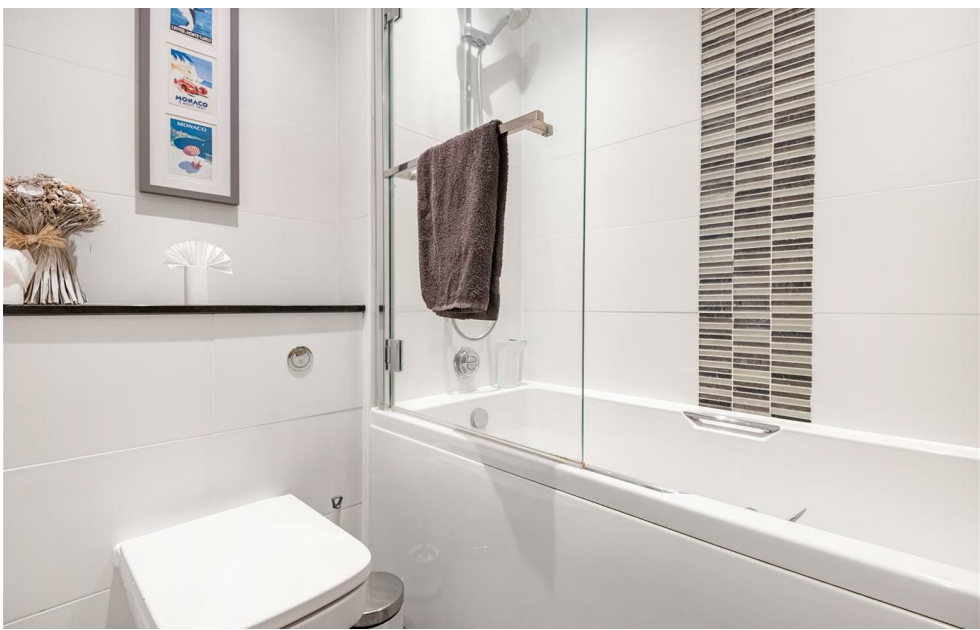


70 Fore Street, Hertford, Hertfordshire, SG14 1BY





70 Fore Street, Hertford, Hertfordshire, SG14 1BY



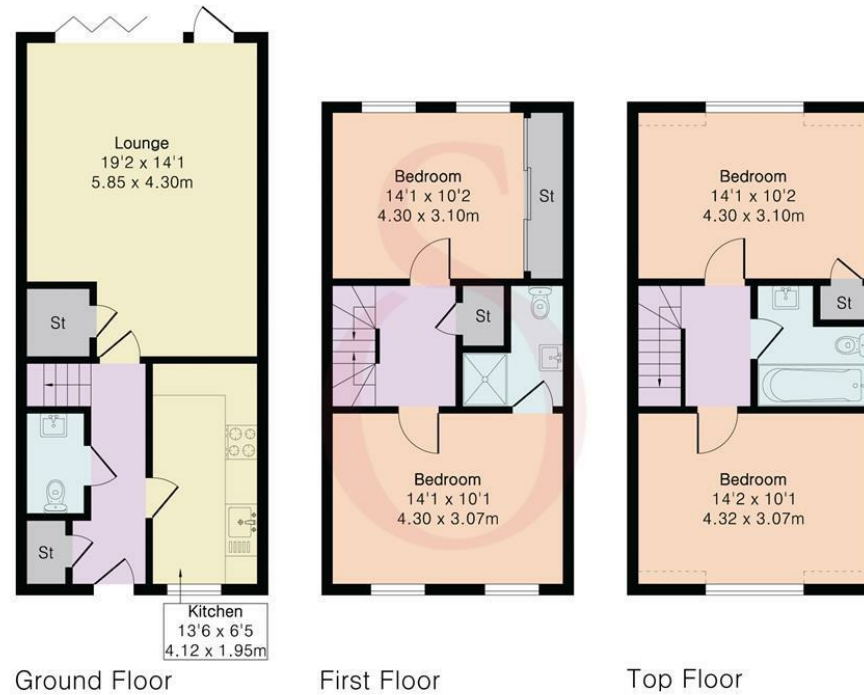
70 Fore Street, Hertford, Hertfordshire, SG14 1BY

Approximate Gross Internal Area 1281 sq ft - 119 sq m

Ground Floor Area 467 sq ft – 43 sq m

First Floor Area 407 sq ft – 38 sq m

Top Floor Area 407 sq ft – 38 sq m



Floor plan produced in accordance with RICS Property Measurement 2nd Edition. Although Pink Plan Ltd ensures the highest level of accuracy, measurements of doors, windows and rooms are approximate and no responsibility is taken for error, omission or misstatement. These plans are for representation purposes only and no guarantee is given on the total square footage of the property within this plan. The figure icon is for initial guidance only and should not be relied on as a basis of valuation.



These particulars, whilst believed to be accurate are set out as a general outline only for guidance and do not constitute any part of an offer or contract. Intending purchasers should not rely on them as statements of representation of fact, but must satisfy themselves by inspection or otherwise as to their accuracy. No person in this firm's employment has the authority to make or give any representation or warranty in respect of the property.

