



## SPACIOUS EXTENDED FOUR BEDROOM TWO BATHROOM FAMILY HOME

Beresford Road, Rickmansworth, Hertfordshire, WD3 8QU

**ROBSONS**

## SPACIOUS EXTENDED FOUR BEDROOM TWO BATHROOM HOME

Beresford Road, Rickmansworth, Hertfordshire,  
WD3 8QU

**KITCHEN/DINING ROOM • RECEPTION ROOM  
• GROUND FLOOR BEDROOM WITH EN-  
SUITE SHOWER ROOM • PORCH • GUEST  
CLOAKROOM • COVERED SIDE STORAGE  
AREA • THREE FURTHER BEDROOMS • FAMILY  
BATHROOM • DRIVEWAY • REAR GARDEN**

### Description

This spacious family home has been extended to create a fabulous kitchen/dining room which is open plan with the reception room, making this an ideal entertaining space. It also has the benefit of a ground floor bedroom with en-suite shower room.

The accommodation briefly comprises of a bright kitchen/dining room which has ample storage and work surfaces, two skylights and French doors onto the patio. This is open plan with the generously sized reception room. There is a ground floor bedroom with en-suite shower room, which also has a door to the side. The ground floor is complemented by a porch, guest cloakroom and covered side storage area.





To the first floor are three bedrooms, family bathroom and a storage cupboard.

The property has a driveway providing off street parking and access, via a covered storage area, to the rear garden, which is mainly laid to lawn with a patio area.

### **Location**

Rickmansworth town centre has a wide range of boutique shops, coffee houses, restaurants and major supermarkets. The Metropolitan and Chiltern line train services connect you to London Baker Street, Marylebone Station and beyond. The M25 motorway is available at both junction 17 and 18, connecting you to the national motorway network. Major London airports are also within reach. The area is well served for good quality private and state schools for all ages. Chorleywood and Rickmansworth offer everything for the sporting individual from rugby, cricket, football, tennis, horse riding and golf. Rickmansworth Aquadrome is an ideal setting for walks, sailing, fishing and water skiing.

### **Additional Information**

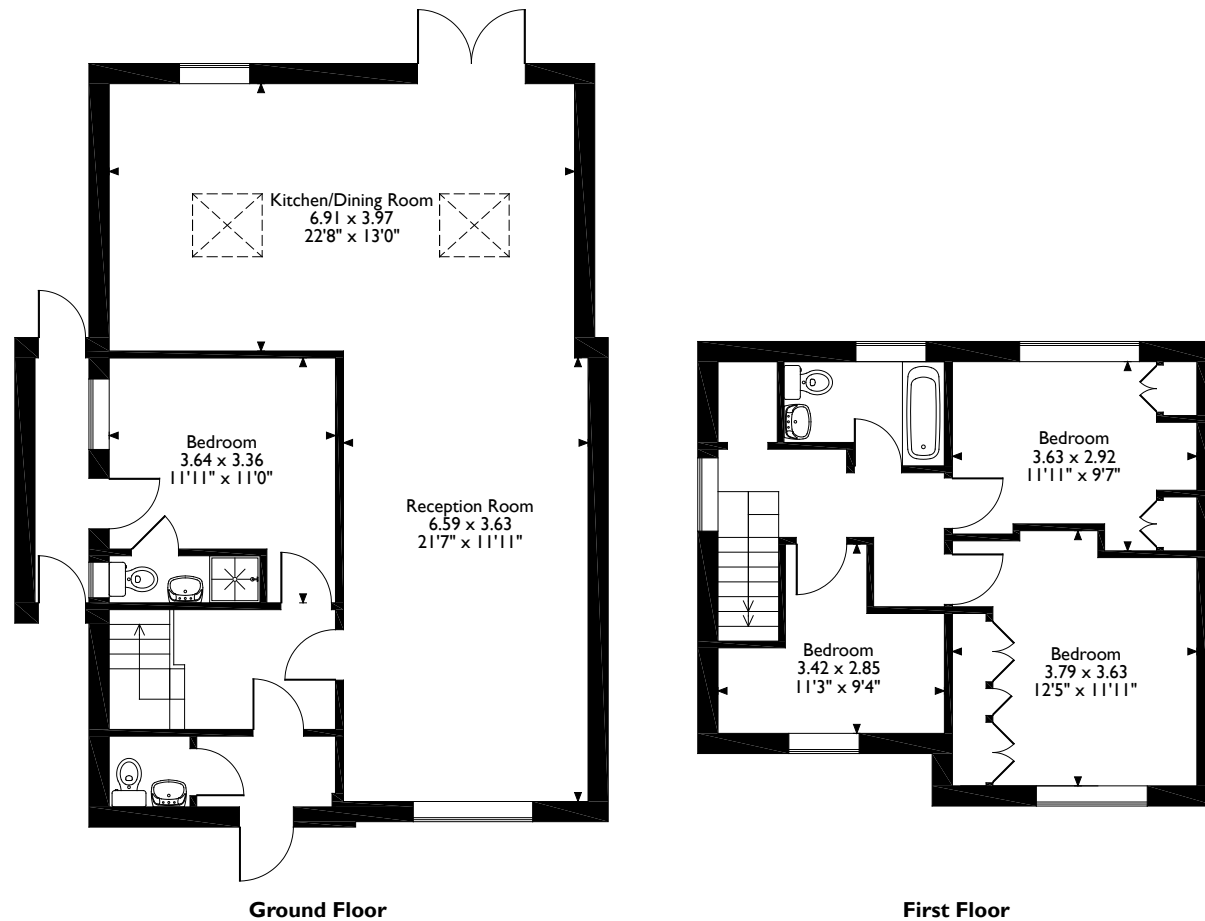
Tenure: Freehold

Local Authority: Three Rivers District Council

Energy Efficiency Rating: Band C



Beresford Road Mill End, Rickmansworth  
Approximate Gross Internal Area  
118 Sq M/1265 Sq Ft



Please note that the location of doors, windows and other items are approximate and this floorplan is to be used for illustrative purposes only. Unauthorized reproduction is prohibited.



130 High Street, Rickmansworth, Hertfordshire, WD3 1AB  
Tel: 01923 777762 Email: rickmansworth@robsonswb.com

[www.robsonswb.com](http://www.robsonswb.com)

