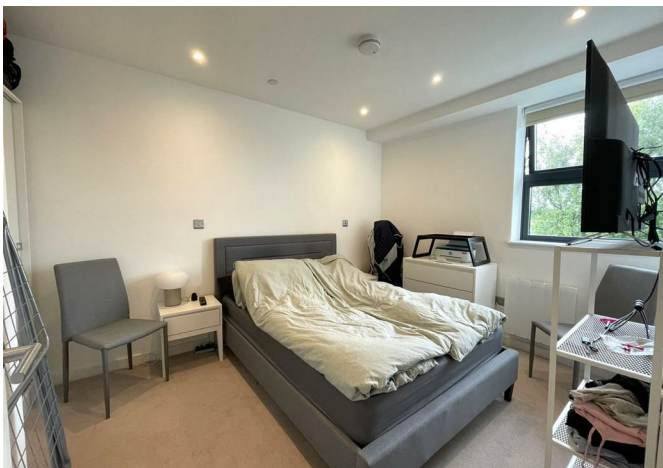




20 Dolphin Bridge House Rockingham Road, Uxbridge, London, UB8 2FE

£1,500 Per month



20 Dolphin Bridge House Rockingham Road, Uxbridge, London, UB8 2FE

£1,500 Per month

New to the market, this well presented spacious unfurnished one bedroom executive apartment is located in the sought after Dolphin Bridge House development.

The property benefits from a large open plan living area with wooden flooring, stylish fully integrated kitchen with breakfast bar and separate utility cupboard, large double bedroom, luxury shower room, neutral decoration throughout and secure entry-phone access.

Residents have one secure allocated parking space.

Dolphin Bridge House is just a short walk from Uxbridge centre, the underground station and Brunel University.

Description



Situation



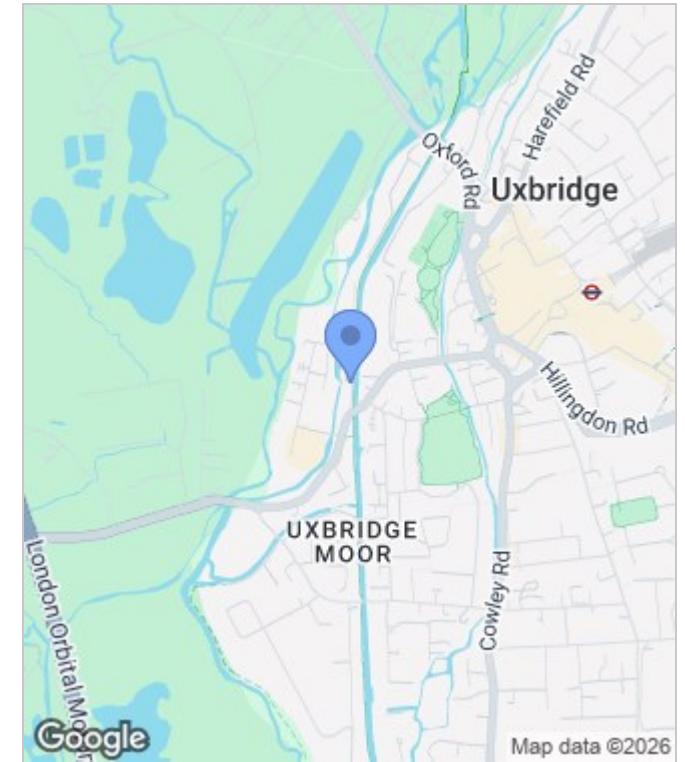
Unfurnished
Council Tax Band: C
Available: 14th July 2026

Floor Plans



All measurements are approximate and for display purposes only

Area Map



Energy Performance Graph

Energy Efficiency Rating		Current	Potential
Very energy efficient - lower running costs			
(92 plus) A			
(81-91) B			
(69-80) C		70	70
(55-68) D			
(39-54) E			
(21-38) F			
(1-20) G			
Not energy efficient - higher running costs			
England & Wales		EU Directive 2002/91/EC	

These particulars, whilst believed to be accurate are set out as a general outline only for guidance and do not constitute any part of an offer or contract. Intending purchasers should not rely on them as statements of representation of fact, but must satisfy themselves by inspection or otherwise as to their accuracy. No person in this firm's employment has the authority to make or give any representation or warranty in respect of the property.