



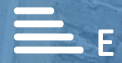
Town • Country • Coast



Providence Place

Calstock

Guide Price £189,950



Providence Place

Calstock

Charming and quirky cottage tucked away in the heart of this sought after quayside village, offered with NO ONWARD CHAIN. Immaculately presented with two double bedrooms, and full of character. Utilised as a successful Airbnb, it offers an ideal blend of cosy living and convenience, just a short walk from local amenities.

The ground floor features an inviting open-plan sitting room and kitchen, a focal point being the woodburning stove, perfect for chilly evenings. The well-appointed kitchen area is complete with a Belfast sink and Quartz worktops. Door through to a rear lobby, with recess for the washing machine and hot water cylinder. A ground floor shower room adds to the practicality. Door leads to a rear storage area, useful for bins and recycling.

On the first floor are two generous double bedrooms, full of natural light and period charm, one with cast iron fireplace.

This unique home is offered with no onward chain, making it a fantastic opportunity for those looking for a characterful permanent residence, holiday home or investment property. Early viewing is highly recommended to appreciate all this delightful cottage has to offer.





Open Plan Sitting/Dining/Kitchen

19'0" x 10'8" (5.80 x 3.26)

Rear Lobby

Shower Room

7'7 x 5'6 (2.31m x 1.68m)

First Floor

Bedroom 1

12'0" x 10'5" (max) (3.67 x 3.20 (max))

Bedroom 2

9'11" x 6'9" (3.04 x 2.07)

Tenure

Freehold

EPC

E53

Services

Mains electricity, drainage and metered water. Electric Storage Heaters. Ultra/Superfast Broadband available.



Local Authority

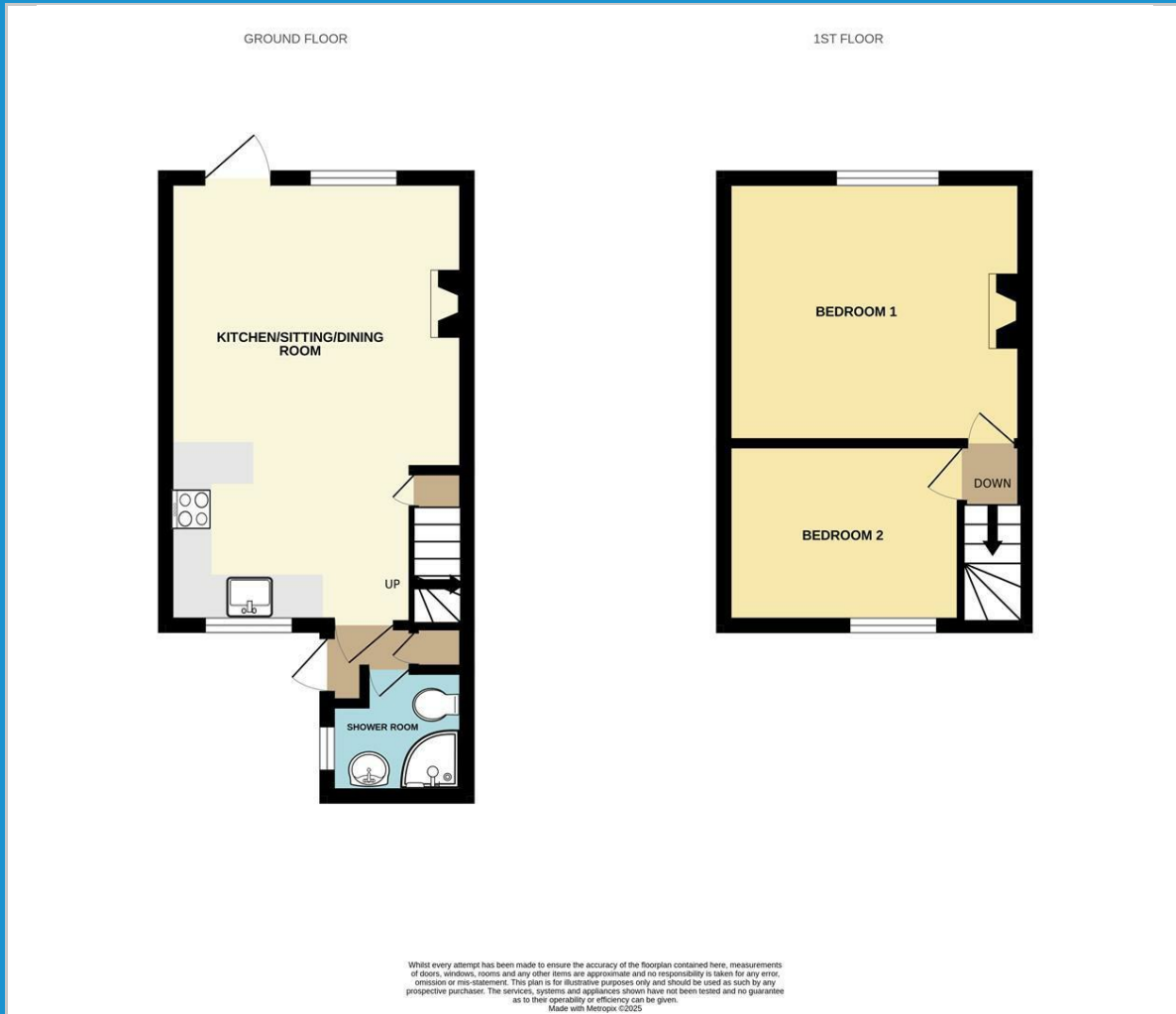
Cornwall Council - Tax Band B

Situation

The popular village of Calstock sits on the banks of the River Tamar and offers a thriving social community with a wide range of events in the village hall and Calstock Art Centre, plus 2 public houses, a coffee shop and a social club in addition to a rail link to Plymouth and Callington. The property is also within easy access of the two neighbouring towns of Callington and Tavistock, with Launceston, Saltash and the maritime city of Plymouth being easily accessible. The area is renowned for its attractive countryside, pleasant walks, and access to the river for anyone who enjoys boating or canoeing/kayaking.



Floor Plan



Viewing

Please contact our View Property Tavistock Office on 01822 614614 if you wish to arrange a viewing appointment for this property or require further information.

These particulars, whilst believed to be accurate are set out as a general outline only for guidance and do not constitute any part of an offer or contract. Intending purchasers should not rely on them as statements of representation of fact, but must satisfy themselves by inspection or otherwise as to their accuracy. No person in this firm's employment has the authority to make or give any representation or warranty in respect of the property.

Unit 1, The Old Dairy Paddons Row, Tavistock, Devon, PL19 0HF
Tel: 01822 614614 Email: Tavy@viewproperty.org.uk www.viewproperty.org.uk

Area Map



Energy Efficiency Graph

