



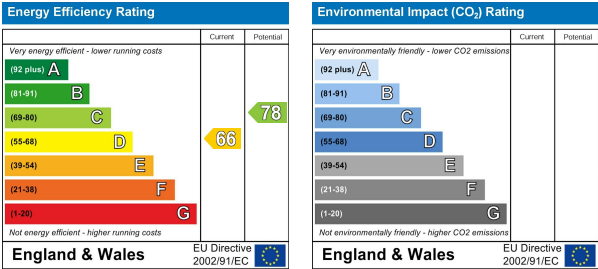
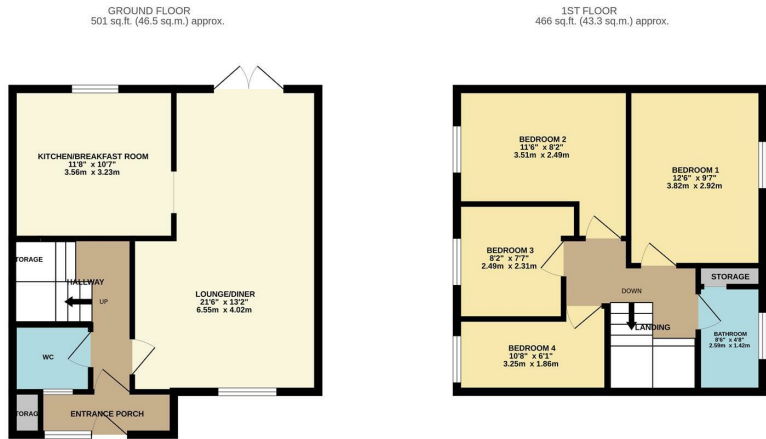
Spruce Hill, Harlow, CM18 7SR
£375,000



Spruce Hill, Harlow, CM18 7SR

Sold Prior To Marketing!

This well presented four bedroom end of terrace home is offered with no onward chain and located in the popular turning of Spruce Hill, Harlow. Situated in a small cul-de-sac, this family home has good size accommodation throughout with the ground floor consisting of an entrance porch, hallway, cloakroom/W.C, large lounge/diner and kitchen/breakfast room, which has a range of fitted wall and base units. The first floor has a newly fitted bathroom and four bedrooms, the garden has side access and is mainly laid to lawn. Spruce Hill is located just off Commonsides Road, with local schools, shops and open fields within walking distance.



These particulars, whilst believed to be accurate are set out as a general outline only for guidance and do not constitute any part of an offer or contract. Intending purchasers should not rely on them as statements of representation of fact, but must satisfy themselves by inspection or otherwise as to their accuracy. No person in this firms employment has the authority to make or give any representation or warranty in respect of the property.