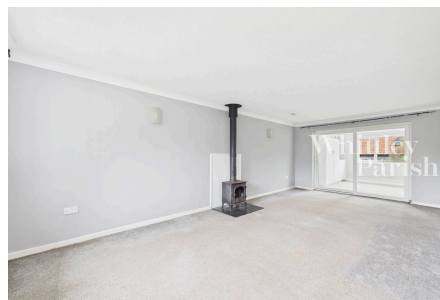


Eastlands, Stradbroke, Eye IP21 5JA

Guide Price £280,000 - £300,000



Offered with no onward chain, this well-positioned detached bungalow provides spacious and versatile accommodation, comprising a bright and generous sitting room with wood-burning stove, separate dining room, well-appointed kitchen, three double bedrooms, family bathroom, separate WC, and a brick-based conservatory. Occupying a substantial corner plot, the property benefits from attractive wrap-around gardens with mature planting, a patio area ideal for outdoor entertaining, useful outbuildings, a garage, and a driveway providing off-road parking for multiple vehicles.

Key Features

- Guide Price £280,000 - £300,000
- No onward chain
- Detached bungalow located in a small close
- Three double bedrooms
- Spacious living area with separate dining room segregated via sliding doors
- Ample parking in form of driveway & single garage
- Private rear garden with patio and lawn along with additional outbuildings
- Well equipped family bathroom and separate WC
- EPC Rating D
- Council Tax Band D

