



West End Lane

West Hampstead, NW6

£4,000 per month
(£923.08 per week)

Nestled in a sought-after residential area, this charming semi-detached ground floor flat offers a perfect blend of period features and modern comfort.

Boasting a spacious 1,012 sq ft layout, this property is ideal for those seeking a stylish and homely living space. The accommodation comprises two bedrooms, two bathrooms, and a well-appointed open plan kitchen living room, perfect for modern living. The property benefits from off-road parking, a private garden, and a patio area, providing a wonderful outdoor space for relaxation or entertaining. Situated in a convenient West Hampstead location with easy access to amenities, schools, and transport links, making it an ideal choice for families or professionals.

CHESTERTONS



West End Lane

West Hampstead, NW6

- Ground Floor Flat
- Off Street Parking For One Car
- Patio and Private Rear Garden
- Two Large Bedrooms
- Two Bathrooms



Deposit Required: £4,615.38
Local Authority: London Borough Of Camden
Council Tax Band: F
EPC Rating: D
Furnished, Part Furnished, Unfurnished

Energy Efficiency Rating		Current	Potential
Very energy efficient - lower running costs			
(92-100)	A		
(81-91)	B		
(69-80)	C		76
(55-68)	D	64	
(39-54)	E		
(21-38)	F		
(1-20)	G		
Not energy efficient - higher running costs			
England, Scotland & Wales		EU Directive 2002/91/EC	

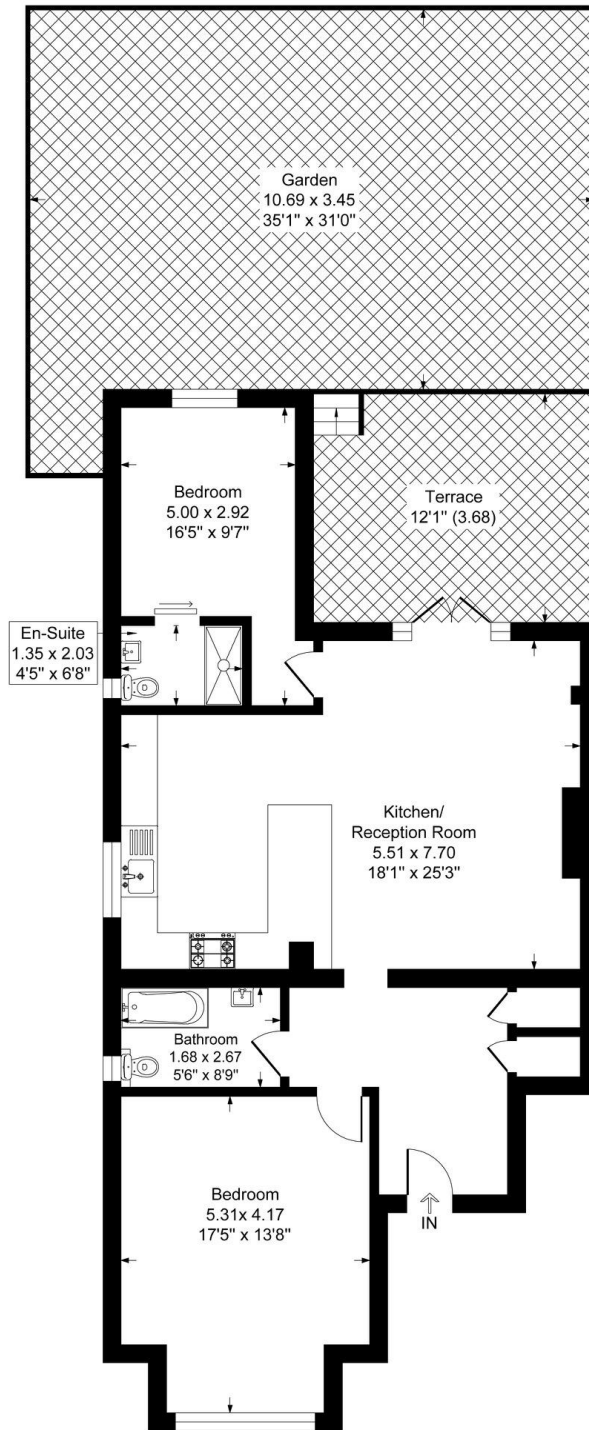
Chestertons Hampstead Lettings

55-56 Hampstead High Street
Hampstead
London
NW3 1QH
hampsteadlettingsusers@chestertons.co.uk
02077941125
chestertons.co.uk

Additional tenant charges apply (fees apply to non-AST tenancies only)
Tenancy Agreement Fee: £300
References per Tenant/Guarantor: £60
Inventory check (approx. £100 – £250 inc. VAT)
chestertons.co.uk/property-to-rent/applicable-fees

West End Lane, London, NW6

Approximate Gross Internal Floor Area = 94.0 sq m / 1012 sq ft



Ground Floor

Illustration for identification purposes only, measurements are approximate, not to scale.

