



Asking Price Of £285,000

Fox Tor Close,  
Paignton, TQ4 7SQ'

A spacious and well-presented four bedroom home, ideally positioned with beautiful countryside views to the rear. The property offers versatile living accommodation throughout and benefits from a private south-west facing garden, making it an ideal family home in a desirable setting.



## GROUND FLOOR

**PORCH** Entrance into the property via a UPVC double glazed front door, with frosted UPVC double glazed window. A perfect space for shoes and coats, with a further UPVC double glazed frosted door leading into the dining room.

**DINING ROOM** A great size room accessed from the porch, featuring a radiator and UPVC double glazed bay window, offering a bright and welcoming dining space.

**LOUNGE** A spacious lounge with radiator, UPVC double glazed window and electric fireplace. Positioned to the rear of the property, enjoying a pleasant outlook.

**DOWNSTAIRS WC** Comprising WC and vanity wash basin.

**KITCHEN** Fitted with an electric oven, induction hob and space for a washing machine and fridge freezer. The room also benefits from a UPVC double glazed window and UPVC door leading to the rear of the property.

## FIRST FLOOR

**BEDROOM ONE** A large double bedroom with fitted wardrobes, radiator and UPVC double glazed windows.

**BEDROOM TWO** A bright and airy double bedroom featuring fitted wardrobe furniture, radiator and UPVC double glazed window.

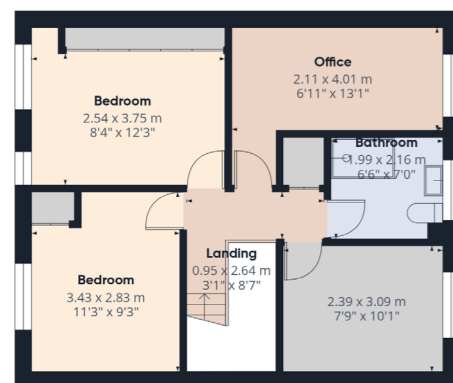
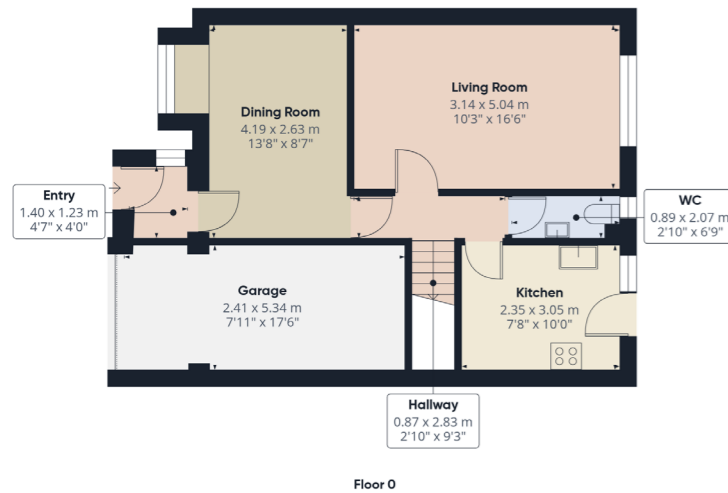
**BEDROOM THREE** A double bedroom with radiator and UPVC double glazed window, enjoying beautiful countryside views to the rear. Positioned on the south-west facing side of the property, currently used as a study but well suited as a bedroom.

**BEDROOM FOUR** A versatile room with radiator and UPVC double glazed window overlooking the fields to the rear, offering stunning countryside views. Currently used as an office but suitable as a double or large single bedroom.

**BATHROOM** A modern family bathroom fully tiled and fitted with spotlights, extractor fan, large walk-in low profile shower, WC, vanity wash basin and heated towel rail. Also benefits from a frosted UPVC double glazed window.

## OUTSIDE

**GARDEN** An enclosed south-west facing rear garden, predominantly laid with patio stones, creating a low maintenance and very sunny outdoor space. The garden is private and not overlooked, with planting beds located to the rear corner.



Address 'Fox Tor Close, Paignton, TQ4 7SQ'

Tenure 'Freehold'

Council Tax Band 'D'

EPC Rating 'TBC'

Taylor's Estate Agents  
256 Torquay Road  
Paignton  
TQ3 2EZ