



## 3 Meteor Row, Grove, Wantage, OX12 0PG

£1,600 PCM - 20th February 2026.

- Three bedroom house located on a new development in Grove
- Enclosed rear garden
- Ultrafast broadband
- Available furnished
- Driveway with parking for 2 cars
- EPC B
- Two double bedrooms and one single, ensuite shower to bedroom one
- Gas central heating

# 3 Meteor Row, Wantage OX12 0PG

Presented to a high standard, 3 bedroom house located on a new development in Grove. Sitting room with sofa, coffee table and arm chair, fully fitted kitchen with electric oven, gas hob, fridge/freezer, washing machine, dishwasher, 2 double bedrooms, one single, ensuite shower to bedroom one, family bathroom with shower over bath. Enclosed rear garden, Driveway with parking for 2 cars. Gas central heating. EPC Rating B. Council Tax Band C.

The Ofcom Broadband Checker states there is:

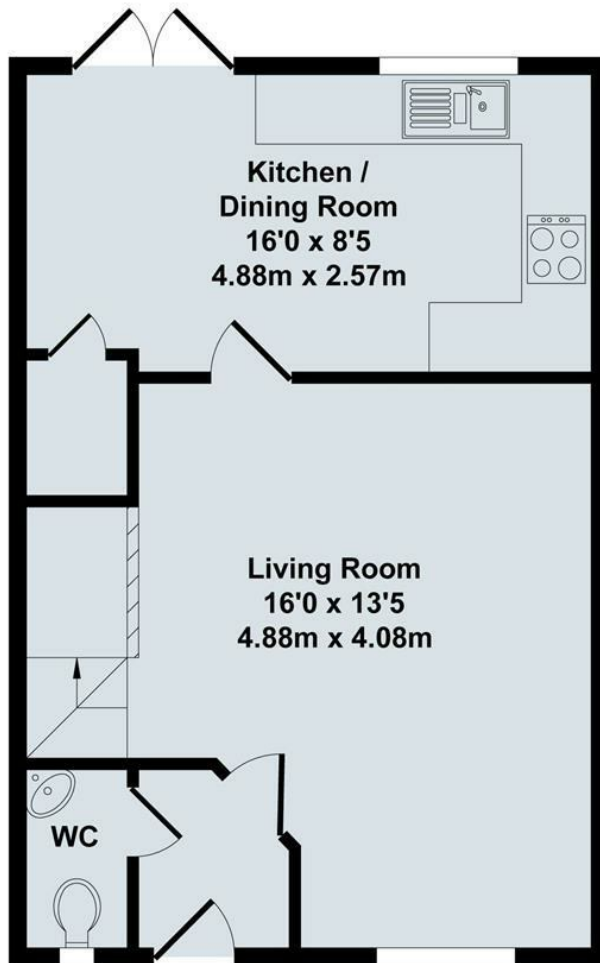
- Ultrafast broadband has download speeds of greater than 300Mbps

When an application is agreed a holding deposit will be required of a maximum of one weeks rent

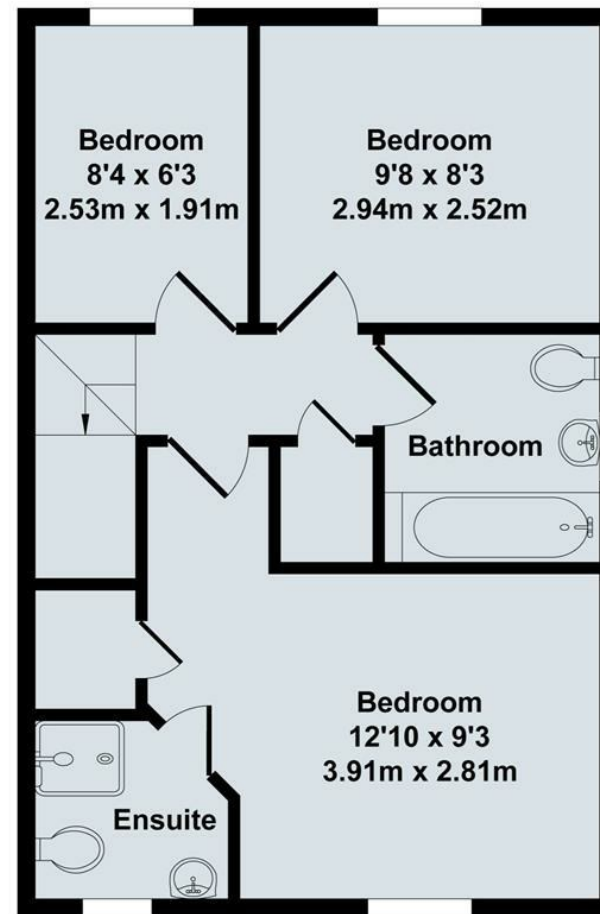


Council Tax Band: C





Ground Floor



First Floor



**Total Approx. Floor Area 793 Sq.Ft. (73.70 Sq.M.)**


All items illustrated on this plan are included in the "Total Approx Floor Area"

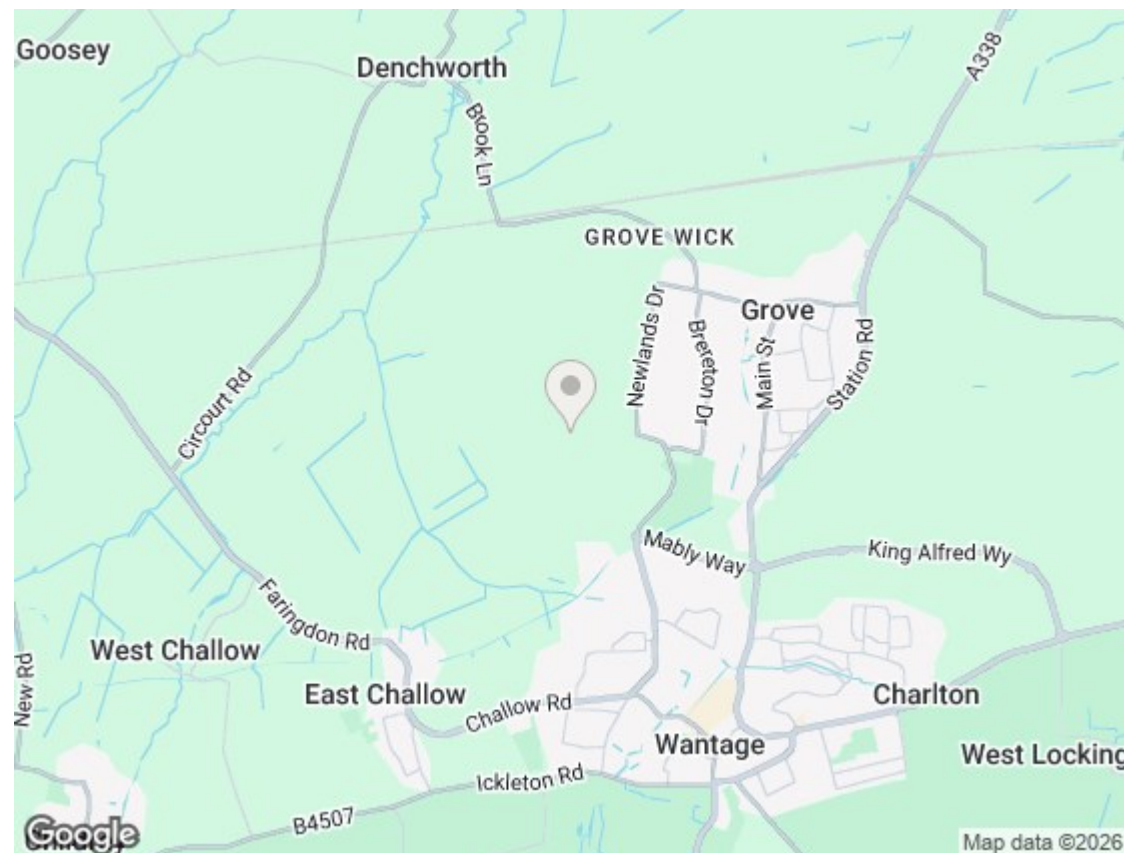






## Energy Efficiency Rating

	Current	Potential
Very energy efficient - lower running costs		
(92 plus) <b>A</b>		<b>96</b>
(81-91) <b>B</b>	<b>83</b>	
(69-80) <b>C</b>		
(55-68) <b>D</b>		
(39-54) <b>E</b>		
(21-38) <b>F</b>		
(1-20) <b>G</b>		
Not energy efficient - higher running costs		
<b>England &amp; Wales</b>	EU Directive 2002/91/EC	



### Directions

### Viewings

Viewings by arrangement only. Call 01235 514267 to make an appointment.

### Council Tax Band

C