



Guide Price
£230,000

Freehold

2x  1x  1x 

**Dover Road, Folkestone,
Kent, CT19**

OVER 60?

Secure this property
for up to **59% less!**

Wards
Helping you move forwards



Main features

- Open plan lounge and dining area
- Good condition throughout
- Enclosed rear garden
- Summer house/home office space
- Close to the harbour and amenities

Accommodation

GROUND FLOOR

Entrance Hall

Lounge & Dining Area: 26'3 x 8'6
(8.01m x 2.59m) plus 26'3 x 16'7
(8.01m x 5.06m)

Kitchen: 9'8 x 8'4 (2.95m x 2.54m)

SPLIT LEVEL FIRST FLOOR

Landing

Bedroom 1: 11'9 x 11'2 (3.58m x 3.41m)

Bedroom 2: 11'9 x 8'8 (3.58m x 2.64m)

Bathroom

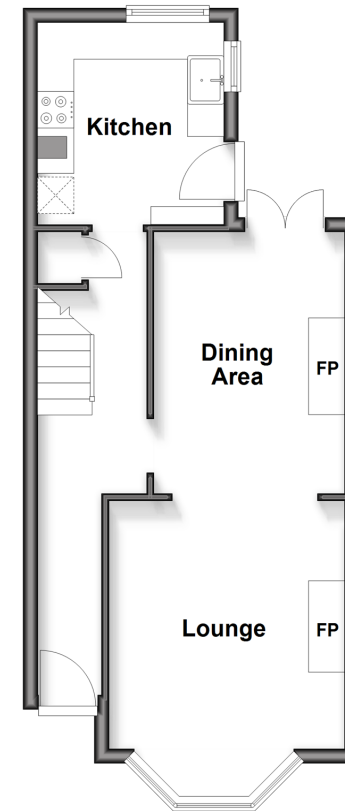
OUTSIDE

Rear Garden

Summer House

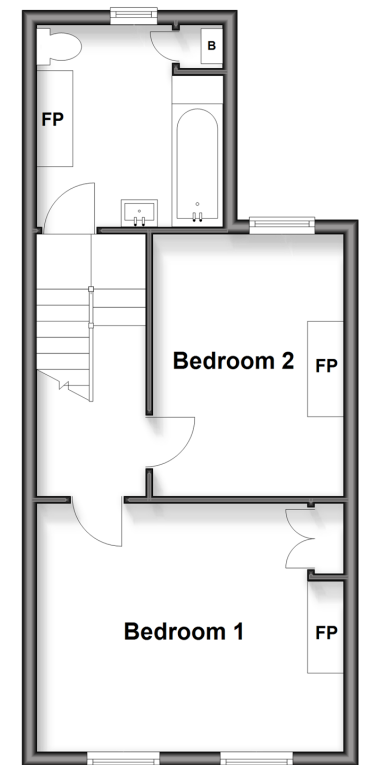
Ground Floor

Approx. 36.8 sq. metres (396.4 sq. feet)



Split Level First Floor

Approx. 37.2 sq. metres (400.8 sq. feet)



Call Folkestone - 01303 256505 ■ wardsof Kent.co.uk

- Legal advice should be taken to verify fixtures/fittings, planning, alterations and/or lease details
- Appliances & services are untested, dimensions are approximate and floor plans are not to scale
- Through a Homewise Home For Life Plan people aged 60+ can secure this property for up to 59% less, by purchasing a Lifetime Lease



12638603/20260216/LS/LS1