



17 Waterman Close, Watford
£475,000





17 Waterman Close

Watford

THREE BEDROOM END OF TERRACE PROPERTY WITH OFF STREET PARKING FOR A MINIMUM OF 2 CARS LOCATED ON A QUIET CUL-DE-SAC OFFERED TO THE MARKET WITH NO UPPER CHAIN.

Early viewing is highly recommended to fully appreciate the space and potential, as properties in this area and price bracket are rarely available without an onward chain. Arrange your viewing today to avoid disappointment and discover all that this attractive home has to offer.

Council Tax band: D

Tenure: Freehold

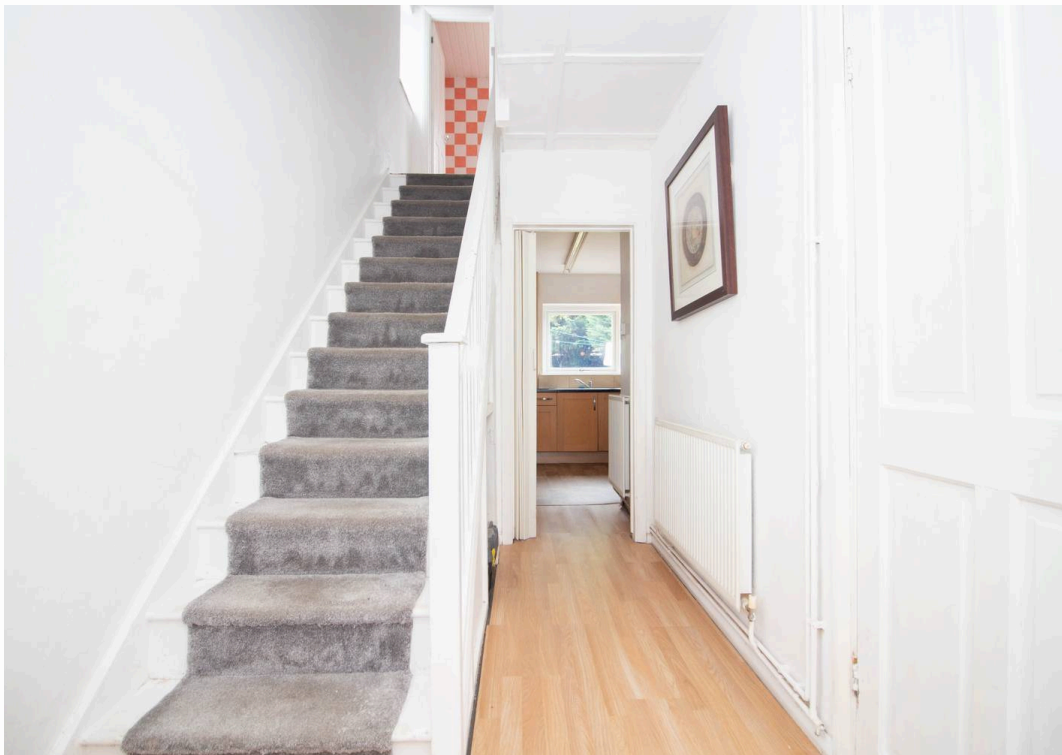
EPC Energy Efficiency Rating: C

EPC Environmental Impact Rating: C



- NO UPPER CHAIN
- THREE GOOD SIZED BEDROOMS
- QUIET CUL-DE-SAC LOCATION
- DOUBLE GLAZING & GAS CENTRAL HEATING
- OFF STREET PARKING FOR 2 CARS
- LARGE REAR GARDEN
- COUNCIL TAX BAND - D
- EPC RATING - C

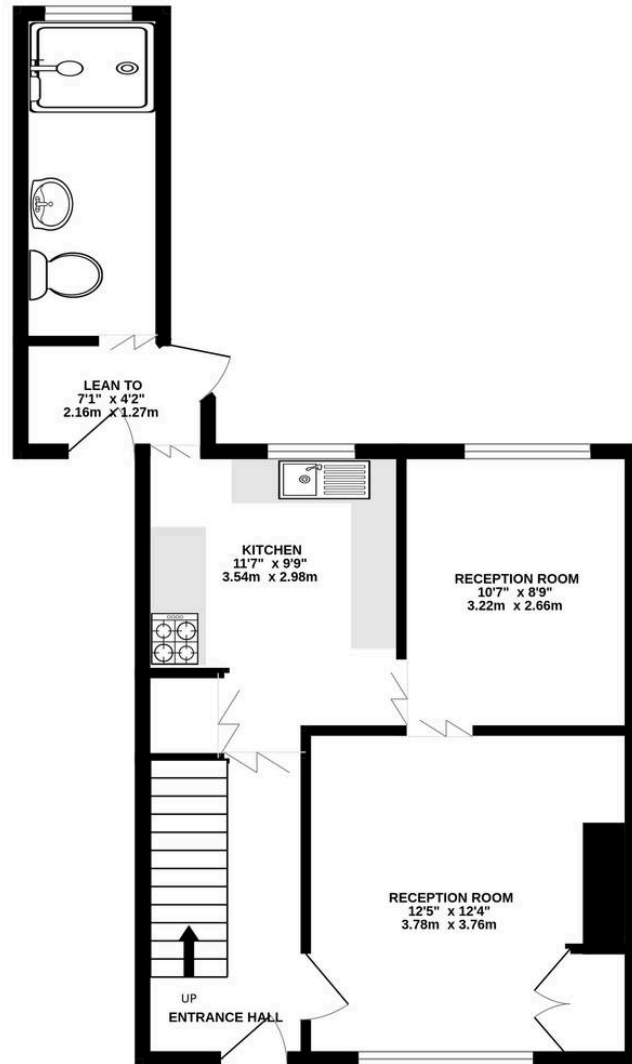




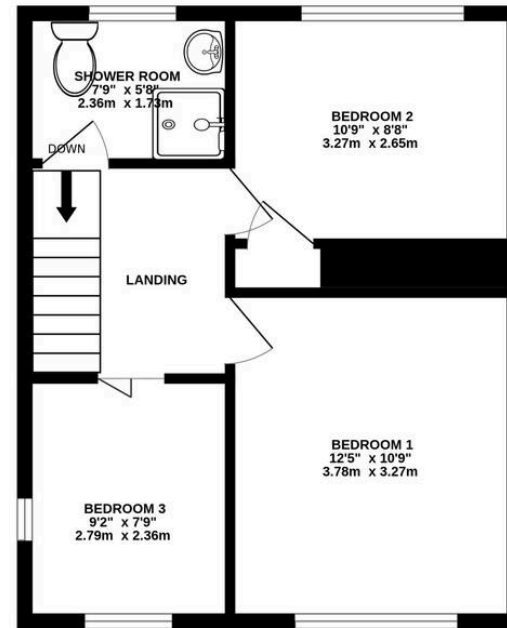




GROUND FLOOR
511 sq.ft. (47.5 sq.m.) approx.



1ST FLOOR
413 sq.ft. (38.4 sq.m.) approx.



TOTAL FLOOR AREA : 924 sq.ft. (85.9 sq.m.) approx.

Whilst every attempt has been made to ensure the accuracy of the floorplan contained here, measurements of doors, windows, rooms and any other items are approximate and no responsibility is taken for any error, omission or mis-statement. This plan is for illustrative purposes only and should be used as such by any prospective purchaser. The services, systems and appliances shown have not been tested and no guarantee as to their operability or efficiency can be given.

Made with Metropix ©2026





Fairfield – Oxhey

1 Station Approach, Watford – WD19 7DT

020 8428 0540 • rob@fairfieldstates.co.uk • fairfieldstates.co.uk/

We have prepared these particulars as a general guide of the property and they are not intended to constitute part of an offer or contract. We have not carried out a detailed survey of the property and we have not tested any apparatus, fixtures, fittings, or services. All measurements and floorplans are approximate, and photographs are for guidance only. These should not be relied upon for the purchase of carpets or any other fixtures or fittings. Lease details, service