



Connells

Springfield Drive
Abingdon



Property Description

A beautifully refurbished three-bedroom end of terrace home, ideally positioned in the highly sought-after Springfield Drive in Abingdon, offering generous living accommodation, a large driveway, and a detached garage.

This well-presented property has been thoughtfully updated throughout and is perfect for families, first-time buyers, or those looking for a ready-to-move-into home. The ground floor comprises a welcoming entrance hall with WC, a spacious dual-aspect sitting room measuring approximately 16ft in length, and a separate dining room providing an excellent space for entertaining. The modern fitted kitchen is well-appointed with a practical layout and overlooks the rear aspect.

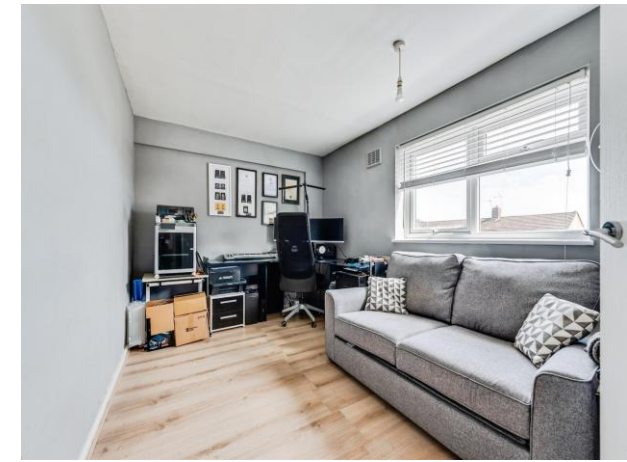
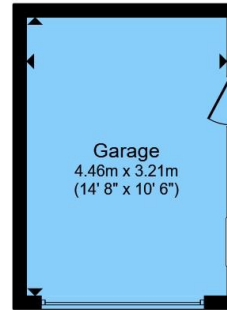
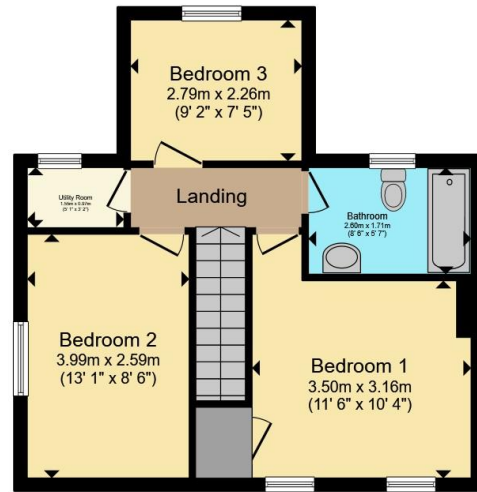
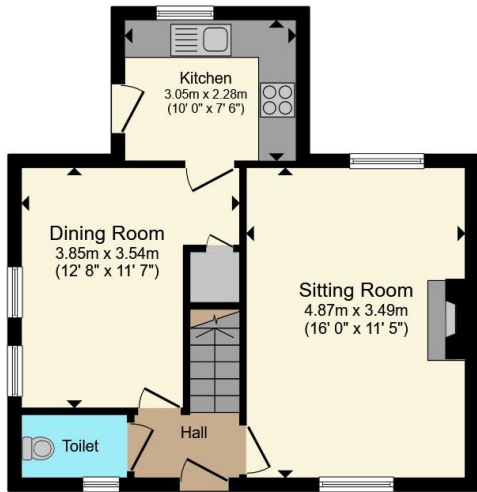
Upstairs, the property offers three well-proportioned bedrooms, including a generous principal bedroom and a further double bedroom, complemented by a good-sized third bedroom ideal as a nursery, guest room, or home office. A contemporary family bathroom completes the first-floor accommodation.

Externally, the property benefits from a substantial driveway providing ample off-road parking for multiple vehicles, along with a detached garage offering additional storage or workshop potential. The end-of-terrace position also provides a greater sense of space and privacy.

Springfield Drive is conveniently situated within easy reach of local shops, amenities and highly regarded schools, making it an excellent choice for families.







Total floor area 97.7 m² (1,052 sq.ft.) approx

This floor plan is for illustrative purposes only. It is not drawn to scale. Any measurements, floor areas (including any total floor area), openings and orientation are approximate. No details are guaranteed, they cannot be relied upon for any purpose and they do not form part of any agreement. No liability is taken for any error, omission or misstatement. A party must rely upon its own inspection(s). Powered by www.propertybox.io



To view this property please contact Connells on

T 01235 555611
E abingdon@connells.co.uk

11 High Street
 ABINGDON OX14 5BB

EPC Rating: D Council Tax Band: C

view this property online connells.co.uk/Property/ABG304611

Tenure: Freehold



1. MONEY LAUNDERING REGULATIONS Intending purchasers will be asked to produce identification documentation at a later stage and we would ask for your co-operation in order that there will be no delay in agreeing the sale. 2. These particulars do not constitute part or all of an offer or contract. 3. The measurements indicated are supplied for guidance only and as such must be considered incorrect. Potential buyers are advised to recheck measurements before committing to any expense. 4. We have not tested any apparatus, equipment, fixtures, fittings or services and it is in the buyers interest to check the working condition of any appliances.

Connells Residential is registered in England and Wales under company number 1489613, Registered Office is Cumbria House, 16-20 Hockliffe Street, Leighton Buzzard, Bedfordshire, LU7 1GN. VAT Registration Number is 500 2481 05.

See all our properties at www.connells.co.uk | www.rightmove.co.uk | www.zoopla.co.uk

Property Ref: ABG304611 - 0004