

Location:

Key points:

- Lower ground floor flat
- Unfurnished
- Awaiting photos
- Close to Acton Mainline Elizabeth Line

Do Better:

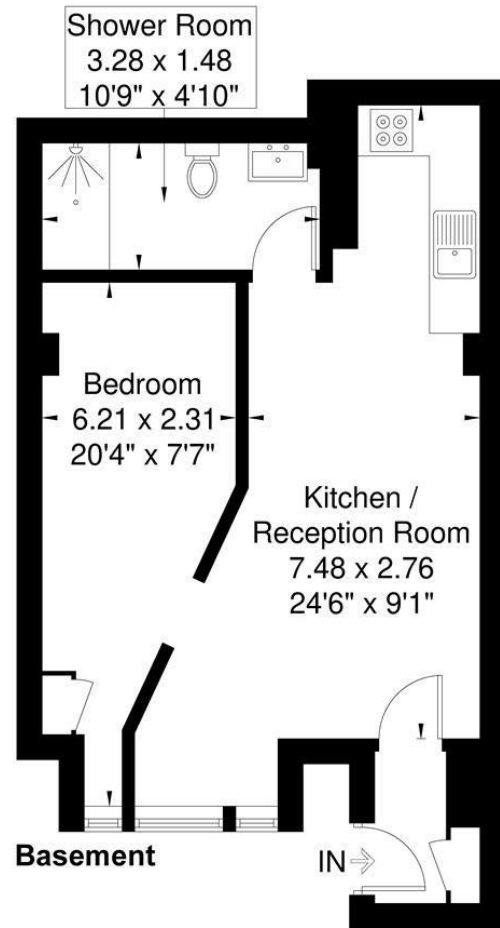
Acton
lettings@astonrowe.co.uk

57-59 Churchfield Road,
Acton, London, W3 6AY

020 8992 3600



Allison Road
Approximate Gross Internal Area = 41.7 sq m / 448 sq ft



Although every attempt has been made to ensure accuracy, all measurements are approximate. The floorplan is for illustrative purposes only and not to scale.
© www.perspective.co.uk

To Let: £1,600 Per Month

Allison Road, Acton W3 6JF

Energy Efficiency Rating		Current	Potential
Very energy efficient - lower running costs			
(92 plus) A			
(81-91) B			
(69-80) C			
(55-68) D			
(39-54) E			
(21-38) F			
(1-20) G			
Not energy efficient - higher running costs			
England & Wales		79	79
	EU Directive 2002/91/EC		

Environmental Impact (CO ₂) Rating		Current	Potential
Very environmentally friendly - lower CO ₂ emissions			
(92 plus) A			
(81-91) B			
(69-80) C			
(55-68) D			
(39-54) E			
(21-38) F			
(1-20) G			
Not environmentally friendly - higher CO ₂ emissions			
England & Wales			
	EU Directive 2002/91/EC		

- 1 Reception Rooms
- 1 Bedrooms
- 1 Bathrooms

The current tenant says:

A one bedroom low ground floor flat which is located a short walk to Acton Mainline Elizabeth Line. Ideal for a couple or single professional the property consists off spacious open plan kitchen reception, double bedroom and modern Bathroom.

Allison Road is walking distance to Churchfield Road, Acton Park and Acton Central overground.

EPC rating C

What's better:

