



# HARDINGS



Alexandra Road  
Price Guide £775,000



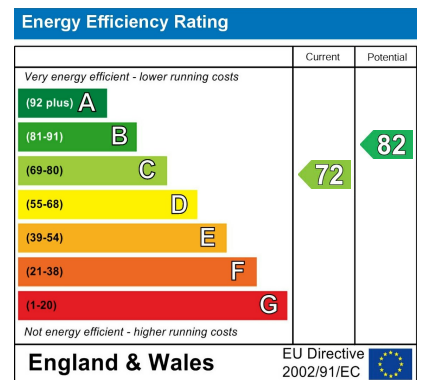


Situated on the ever-popular Alexandra Road in the heart of Windsor, this beautifully presented three-bedroom period home effortlessly combines timeless character with stylish contemporary living. Boasting a wealth of original features and immaculate condition throughout.

The ground floor features an elegant front reception room, and a bright and welcoming family room, which then flows seamlessly into a spacious eat-in family kitchen, with views over the private west-facing garden. Additional benefits include a practical utility room and useful cellar storage. Upstairs, the property offers three well-proportioned bedrooms.

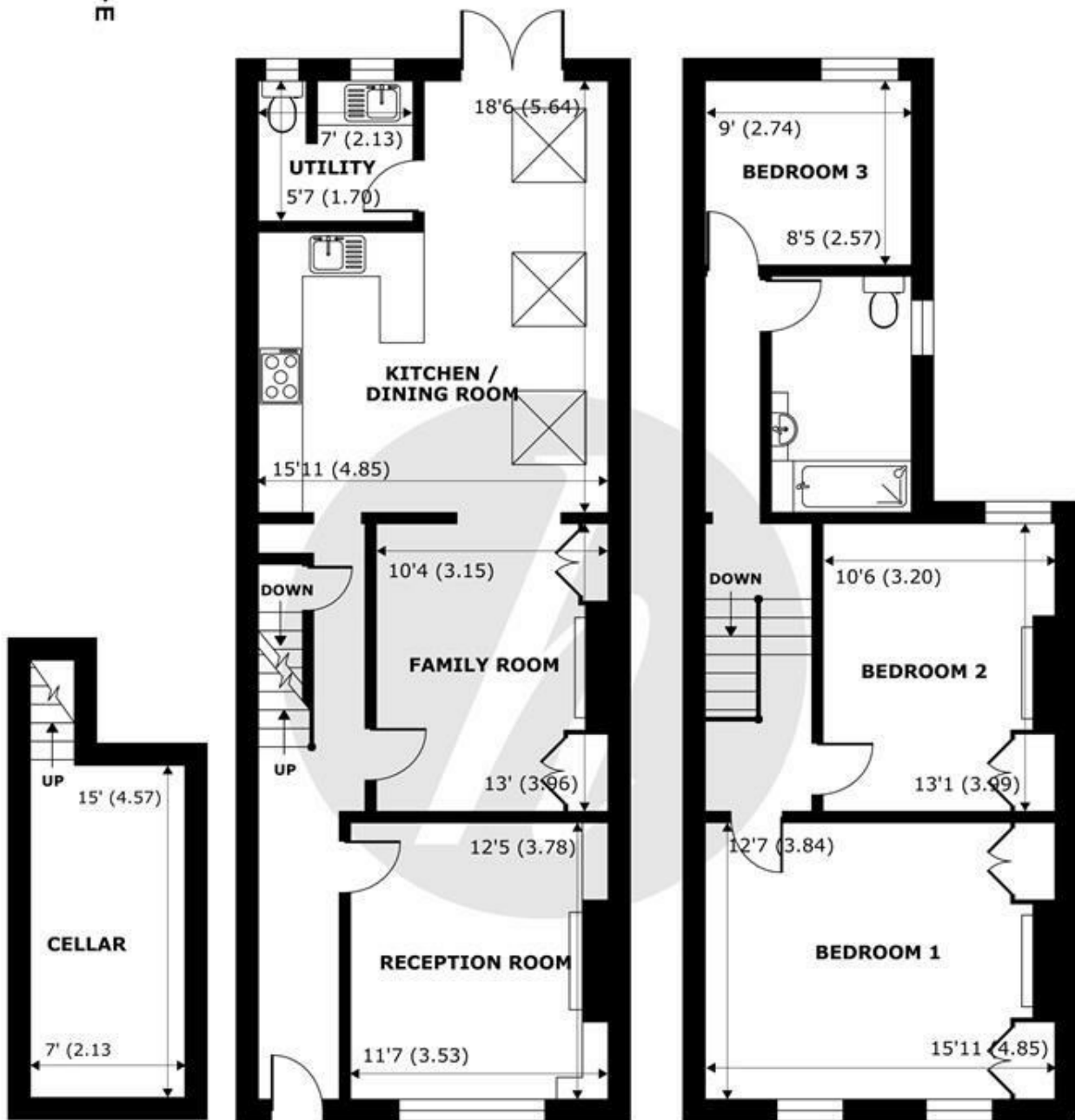
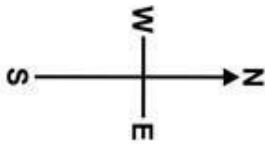
Beautifully maintained premium interiors throughout, including bespoke cabinetry and wardrobes.

All set within a highly sought-after town centre location just moments from Windsor's excellent amenities, transport links, and renowned schools.



## Features

- Three Bedroom Home
- Private West Facing Garden
- Front Reception Room
- Town Centre Location
- Immaculate Condition Throughout
- Spacious Eat-in Family Kitchen
- Utility Room & Cellar
- Bespoke Cabinetry and Wardrobes
- Wealth of Period Features
- Family Room



**CELLAR**  
abt 172 SQFT  
(16 SQMT)

**GROUND FLOOR**  
abt 856 SQFT (79.5 SQMT)

**FIRST FLOOR**  
abt 726 SQFT (67.4 SQMT)

## Alexandra Road, Windsor, SL4

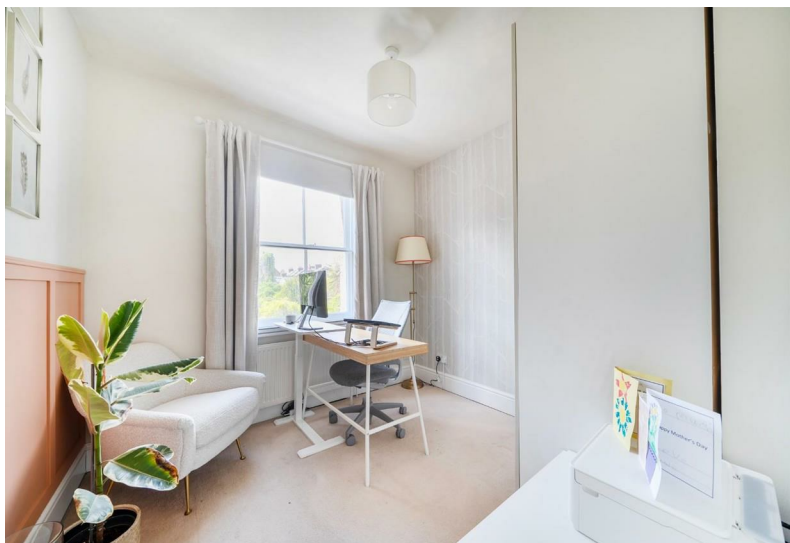
Approximate Internal Area = 1440 sq ft / 133.8 sq m (Exclude Garage & Outbuildings)  
 Approximate External Area = 1754 sq ft / 162.9 sq m (Exclude Garage & Outbuildings)

For identification only - Not to scale



Floor plan produced in accordance with RICS Property Measurement 2nd Edition,  
 Incorporating International Property Measurement Standards (IPMS2 Residential). © nichecom 2026.  
 Produced for Hardings. REF: 1454520





11 High Street, Windsor, Berkshire, SL4 1LD,  
T: 01753 833 118 | E: info@hardings.co.uk  
www.hardings.co.uk

