



Edgington Road, SW16

£400,000

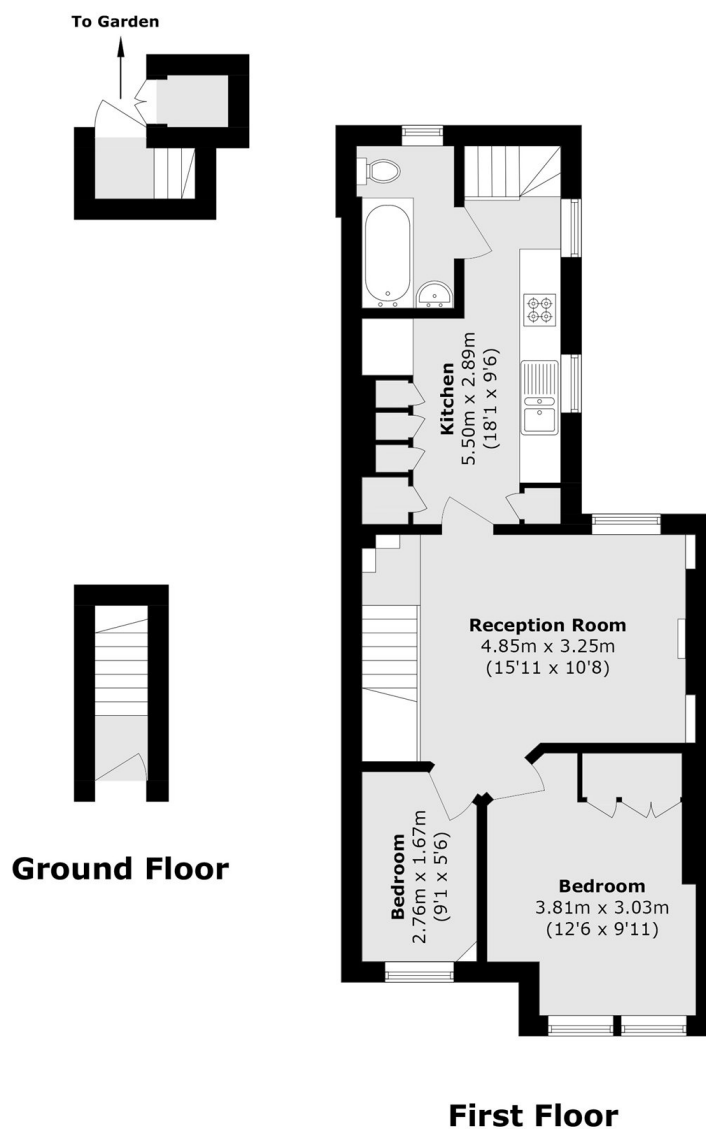
A charming period maisonette with a private garden, offered to the market with no onward chain and a share of freehold. The property comprises two bedrooms, a spacious living room, and a modern kitchen, making it an ideal home for first-time buyers or investors alike.

Edgington Road is a quiet cul-de-sac located just a few minutes' walk from Streatham Common railway station. The amenities of Streatham High Road are easily accessible, along with the open green spaces of Streatham Common.

Features

- Two Bedrooms
- Private Garden
- No Onward Chain
- Share Of Freehold
- Own Front Door
- Separate Kitchen

Edgington Road, London, SW16



Total area (approx.): 51.3 sq. m (552.1 sq. ft)
External Storage area (approx.): 0.6 sq. m (6.4 sq. ft)