



OVAL ROAD, NW1

£380,000

One Double Bedroom
Excellent Location
Large Living Room
En-Suite Bathroom
Second WC
No Onward Chain

@marshandparsons
marshandparsons.co.uk

MARSH &
PARSONS



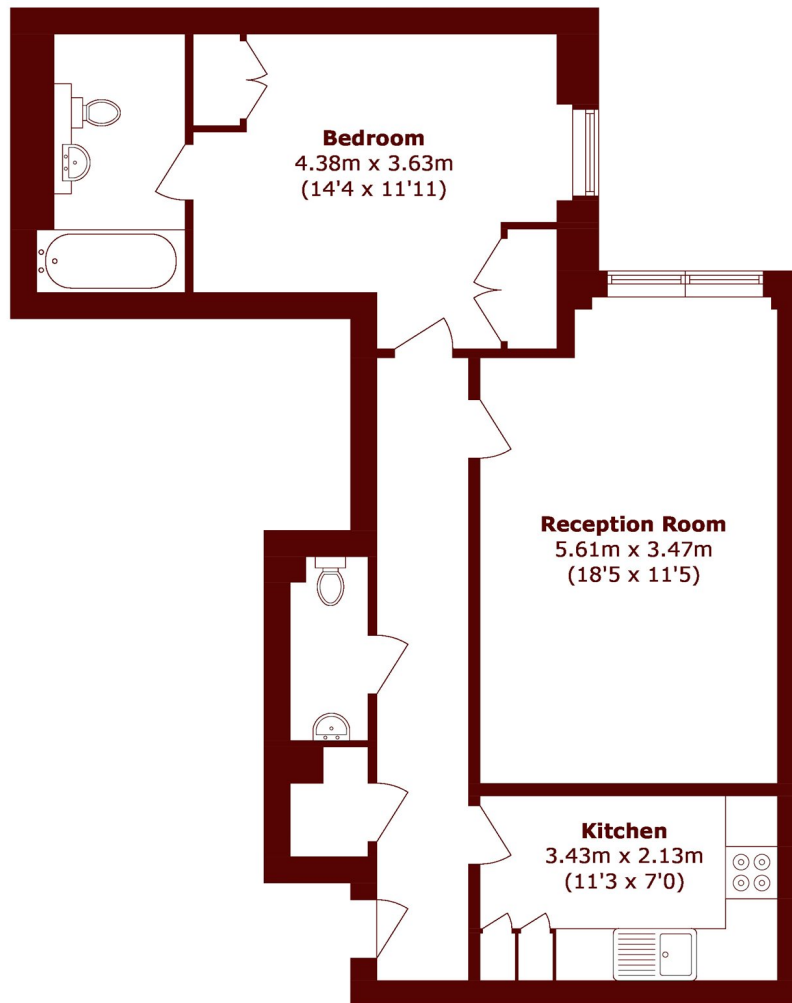
ABOUT THE PROPERTY

A spacious and well-presented one-bedroom apartment, comprising a large living and dining room, a separate kitchen, an en-suite bathroom, an additional WC, offered for sale with no onward chain.

Lock House is ideally situated in the heart of Camden, within walking distance of Regent's Park, Camden High Street, and the Northern Line Underground, with King's Cross also easily accessible.



STEP INSIDE OVAL ROAD



Total area (approx.): 58.3 sq. m (627.5 sq. ft)

Camden
020 7244 2200

Energy Rating: C We aim to make our particulars both accurate and reliable. However, they are not guaranteed; nor do they form part of an offer or contract. If you require clarification on any points then please contact us, especially if you're traveling some distance to view. Please note that appliances and heating systems have not been tested and therefore no warranties can be given as to their good working order

**MARSH &
PARSONS**