



CHATTERTON | REES



40 Harbour Reach The Boulevard, Imperial Wharf, London, SW6 2SS
Asking price £695,000





40 Harbour Reach The Boulevard, Imperial Wharf

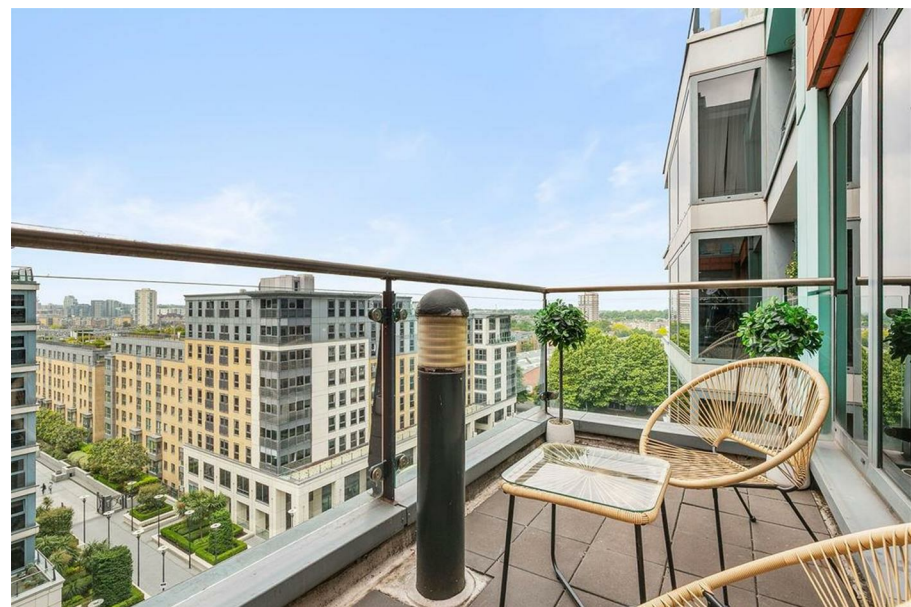
London, SW6 2SS

- 2 Bedrooms
- Reception Room
- Balcony
- 2 Bathrooms
- Kitchen
- Concierge - Residents' Leisure Facilities

A fantastic eighth-floor two-bedroom, two bathroom apartment with a balcony.

Located on the north bank of the River Thames in SW6, adjacent to Chelsea Harbour, Imperial Wharf is a luxury riverside complex by developers St. George with on-site amenities including a 24-hour concierge, a residents' gym, Tesco, landscaped gardens, and a range of cafes and restaurants. It's a real local community with all the amenities you could wish for, set within walking distance to the fabulous King's Road, which provides various choices of cuisines, cafes, bars, and boutiques.

Asking price £695,000



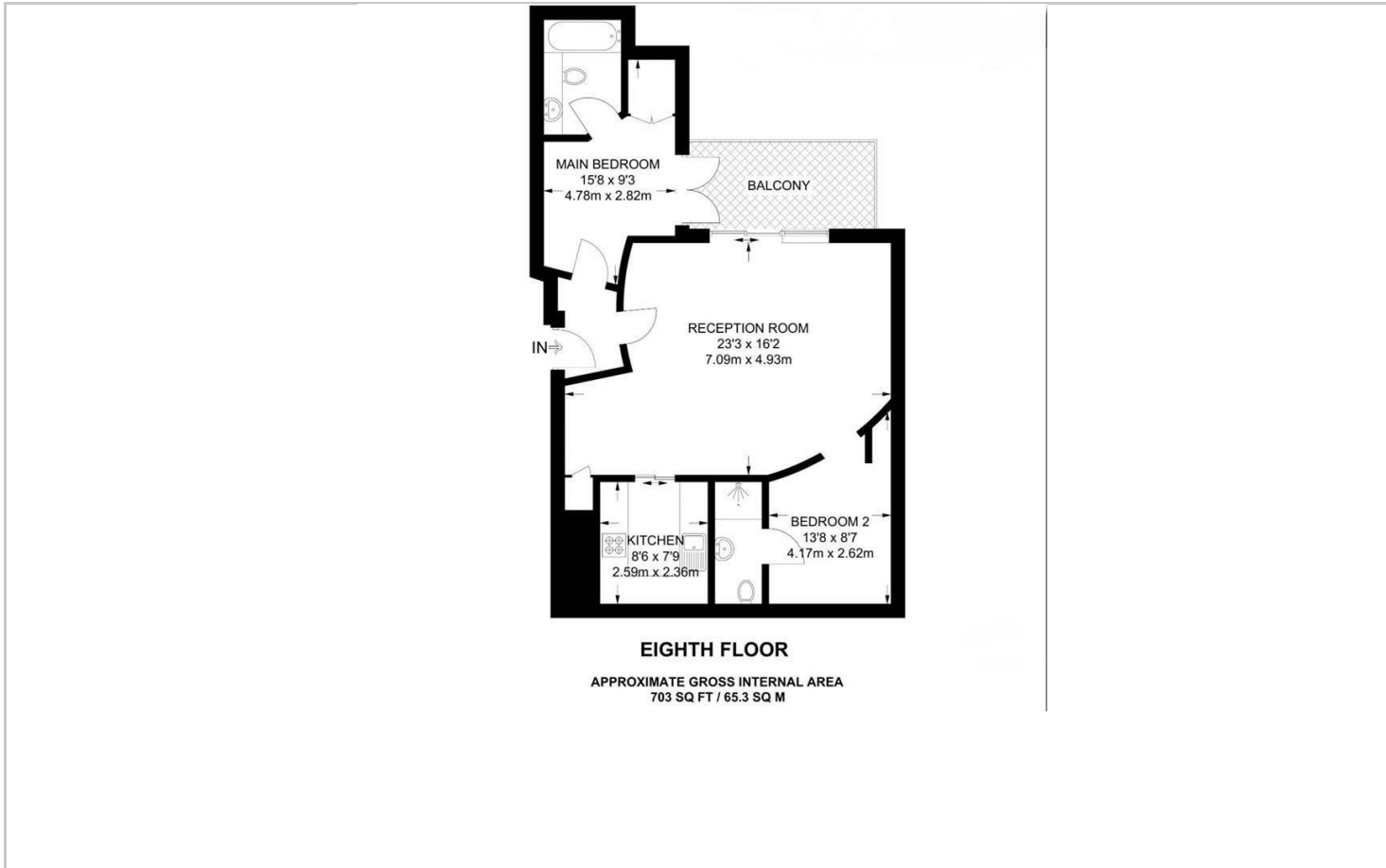


Directions

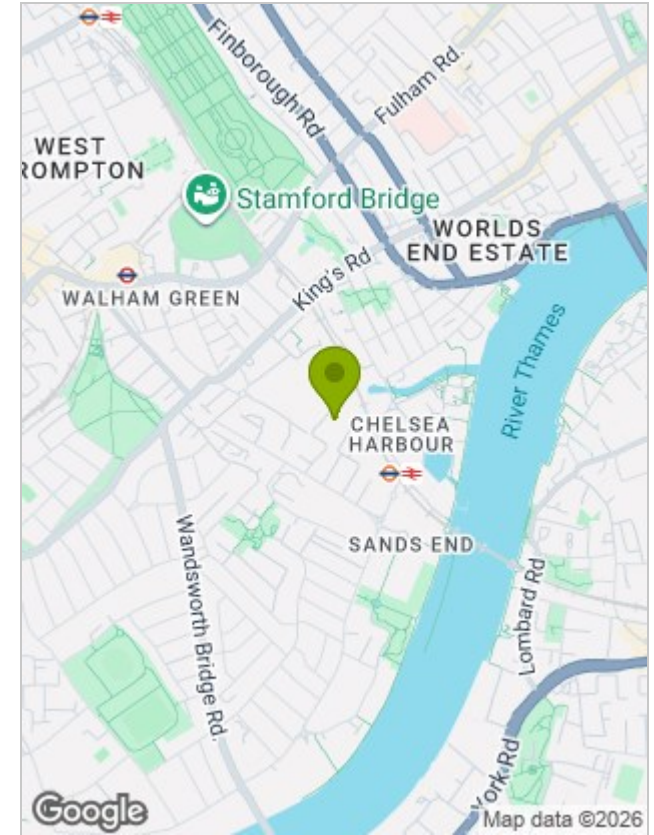




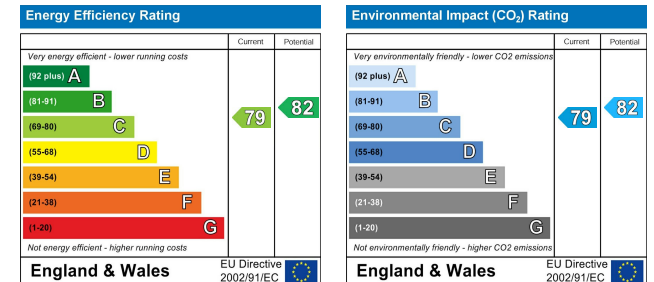
Floor Plans



Location Map



Energy Performance Graph



Viewing

Please contact our Chatterton Rees Office on 020 3780 0580 if you wish to arrange a viewing appointment for this property or require further information.

The particulars are set out as a general outline only for the guidance of intended purchasers or lessees, and do not constitute, any part of a contract. Nothing in these particulars shall be deemed to be a statement that the property is in good structural condition or otherwise nor that any of the services, appliances, equipment or facilities are in good working order. Purchasers should satisfy themselves of this prior to purchasing.