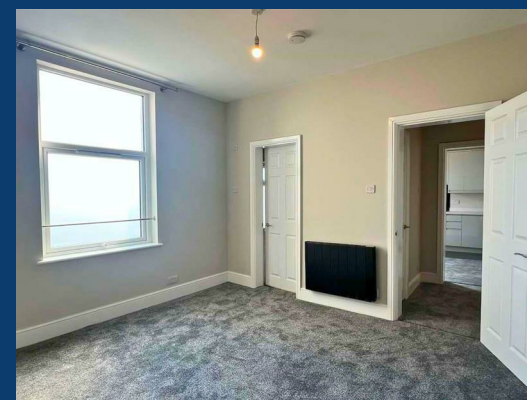




# Wellington Road South

Stockport



£900 Per month

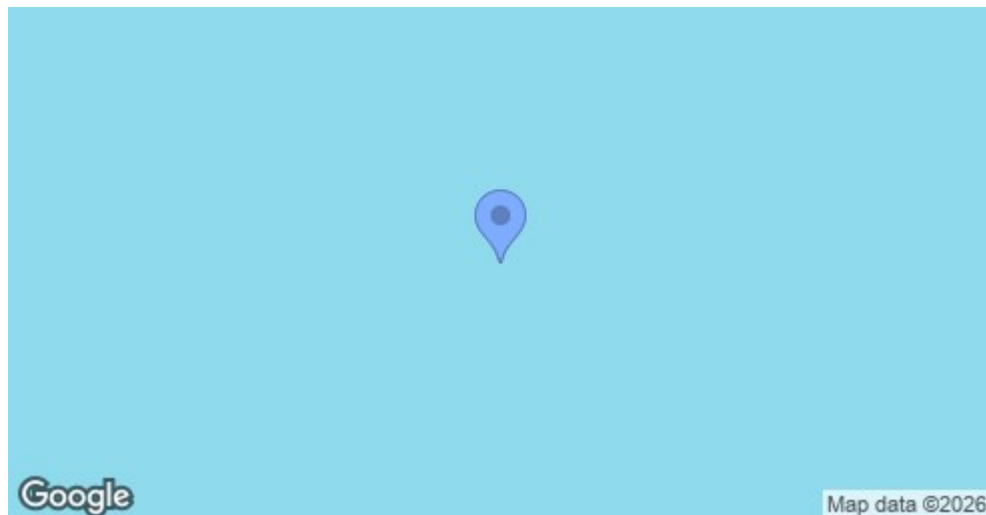
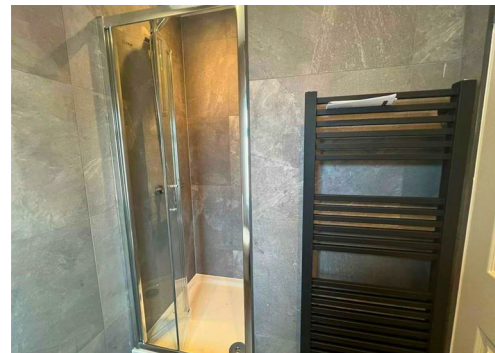



SEND US A MESSAGE



**SPENCER HARVEY**

PASSIONATE ABOUT PROPERTY



Energy Efficiency Rating		
	Current	Potential
<i>Very energy efficient - lower running costs</i>		
(92 plus) <b>A</b>		
(81-91) <b>B</b>		
(69-80) <b>C</b>		
(55-68) <b>D</b>		
(39-54) <b>E</b>		
(21-38) <b>F</b>		
(1-20) <b>G</b>		
<i>Not energy efficient - higher running costs</i>		
<b>England &amp; Wales</b>	EU Directive 2002/91/EC 	

## PROPERTY DESCRIPTION

Available Immediately

Step into this exceptional newly refurbished one-bedroom apartment, offering a stylish finish, thoughtfully designed interiors and everything you need for comfortable, low-maintenance living.

The heart of the home is the bright and spacious open-plan living area, providing plenty of room to relax, dine and entertain. The modern fitted kitchen features a range of integrated appliances, including a fridge/freezer, dishwasher and washer/dryer, delivering both style and practicality.

The well-proportioned double bedroom offers a peaceful retreat, while the bathroom has been beautifully updated with modern fittings, creating a fresh space.

Additional benefits include an allocated parking space, secure bike storage and immediate availability, making your move as straightforward as possible.

Ideally suited to professionals, this superb apartment combines modern design, convenience and an excellent location close to local amenities and transport links.

### KEY FEATURES

**LET AVAILABLE DATE:**

**DEPOSIT: £1,038**

**MIN TENANCY: Add Text**

**LET TYPE: Add Text**

**FURNISH TYPE: Not specified**

**EPC RATING:**

**COUNCIL TAX**

**BAND:**

**A**

