

PARSONS
COMPANY



24 Malthouse Court, Dereham, NR20 4UA
£865 Per Month



24 Malthouse Court, Dereham, NR20 4UA

£865 Per Month

A 2 bedroom semi-detached house, situated within walking distance of Dereham town centre. The property benefits from electric storage heating, UPVC double glazed windows, lounge/diner, fitted kitchen, low maintenance rear garden & an allocated parking space to the rear.

Application Process

Before viewing the property, you will be required to complete a basic application form. All adults over the age of 18 need to be named on the tenancy agreement and 'right to rent' checks will need to be conducted. All applications will then be reviewed, and viewings arranged for those suitable for the property.

Available: Immediately
Furnishing: Unfurnished
Council Tax: Band A
No smokers
No pets

Description



Situation

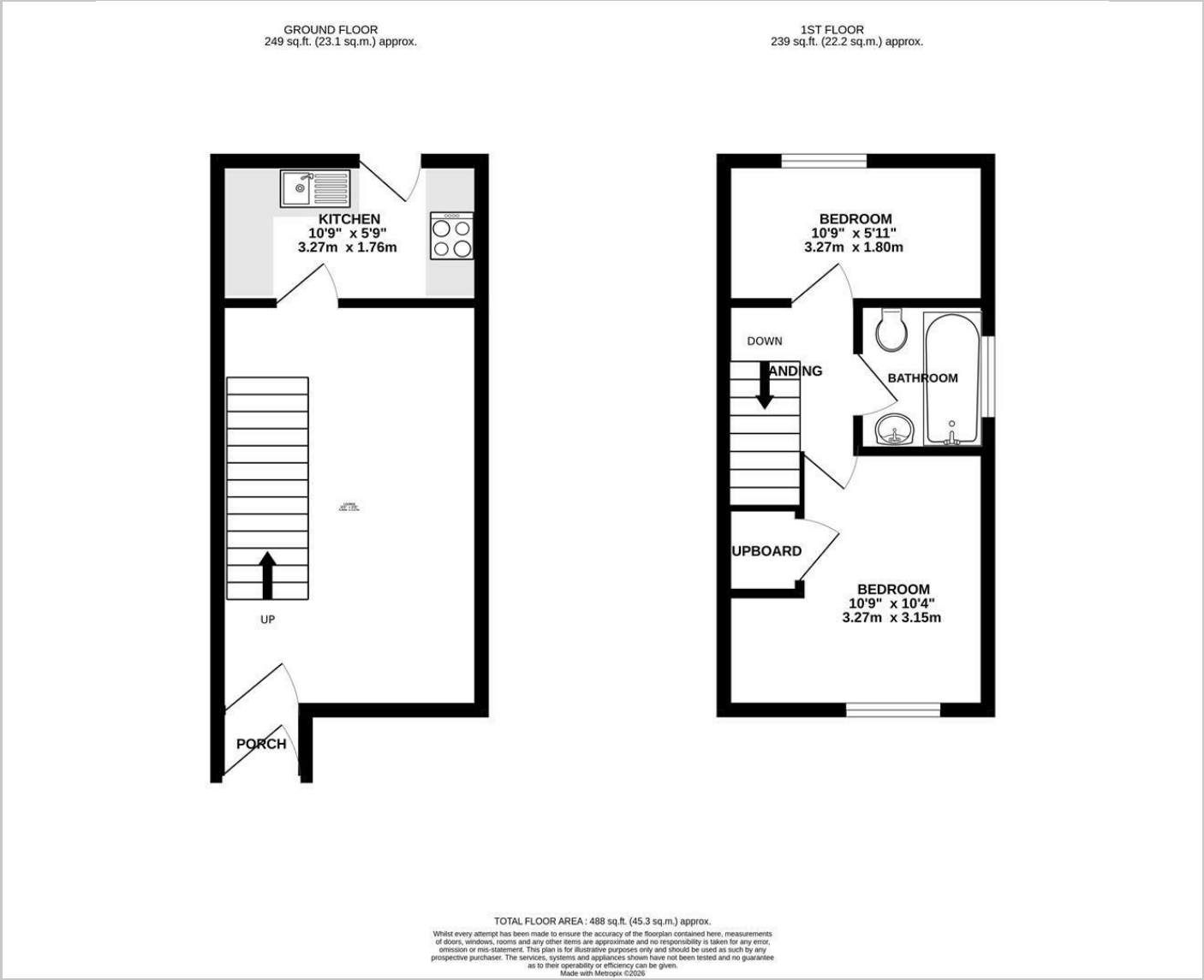


Unfurnished

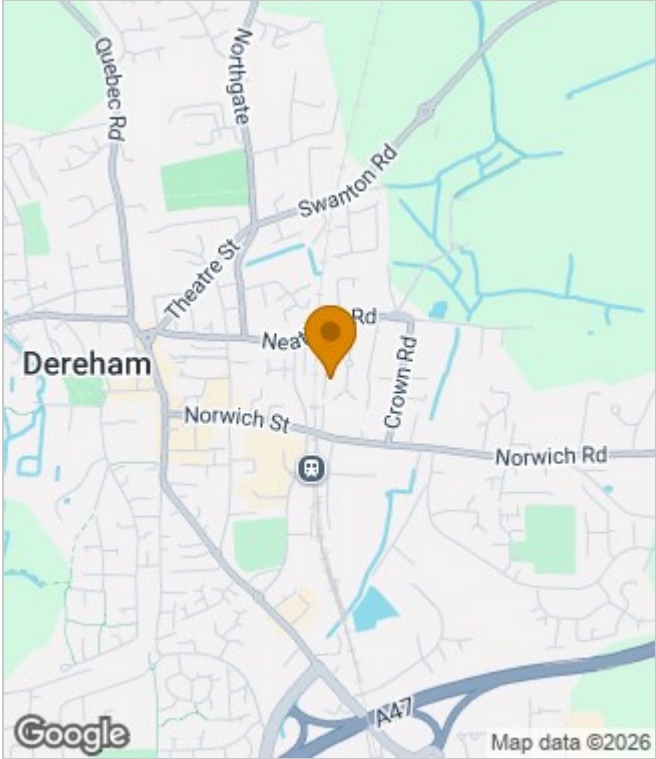
Council Tax Band: A

Available: 6th January 2026

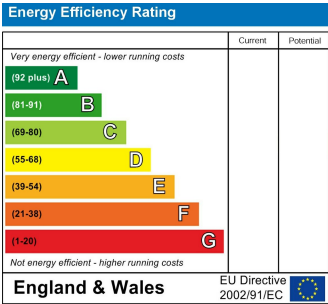
Floor Plans



Area Map



Energy Performance Graph



These particulars, whilst believed to be accurate are set out as a general outline only for guidance and do not constitute any part of an offer or contract. Intending purchasers should not rely on them as statements of representation of fact, but must satisfy themselves by inspection or otherwise as to their accuracy. No person in this firms employment has the authority to make or give any representation or warranty in respect of the property.