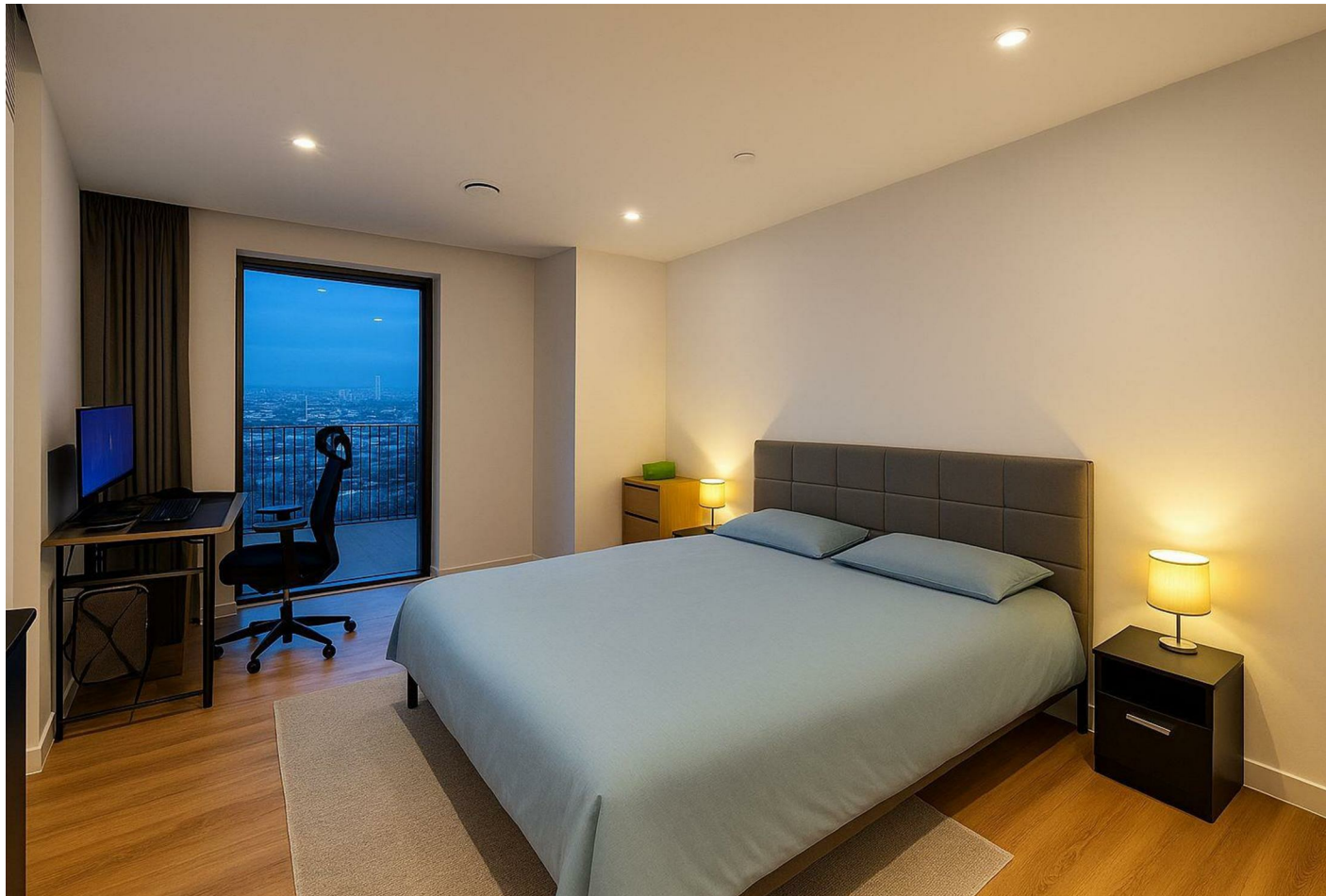




Marsh Wall, London, E14 9EN
£2,800 Per month



Marsh Wall, London, E14 9EN

£2,800 Per month

Long Let - New Home

One Thames Quay, a stunning new build apartment. Step into this exquisite apartment and be greeted by a spacious reception room, ideal for entertaining guests or simply relaxing after a long day. The property boasts one well-appointed bedroom, providing a comfortable retreat for rest and relaxation. Additionally, you'll find a sleek bathroom offering both style and convenience.

Situated in close proximity to Canary Wharf, this apartment offers easy access to one of London's most vibrant business districts, ensuring a seamless work-life balance. Not to mention, the property is conveniently located near a variety of local amenities, making daily errands a breeze.

Description

Situation

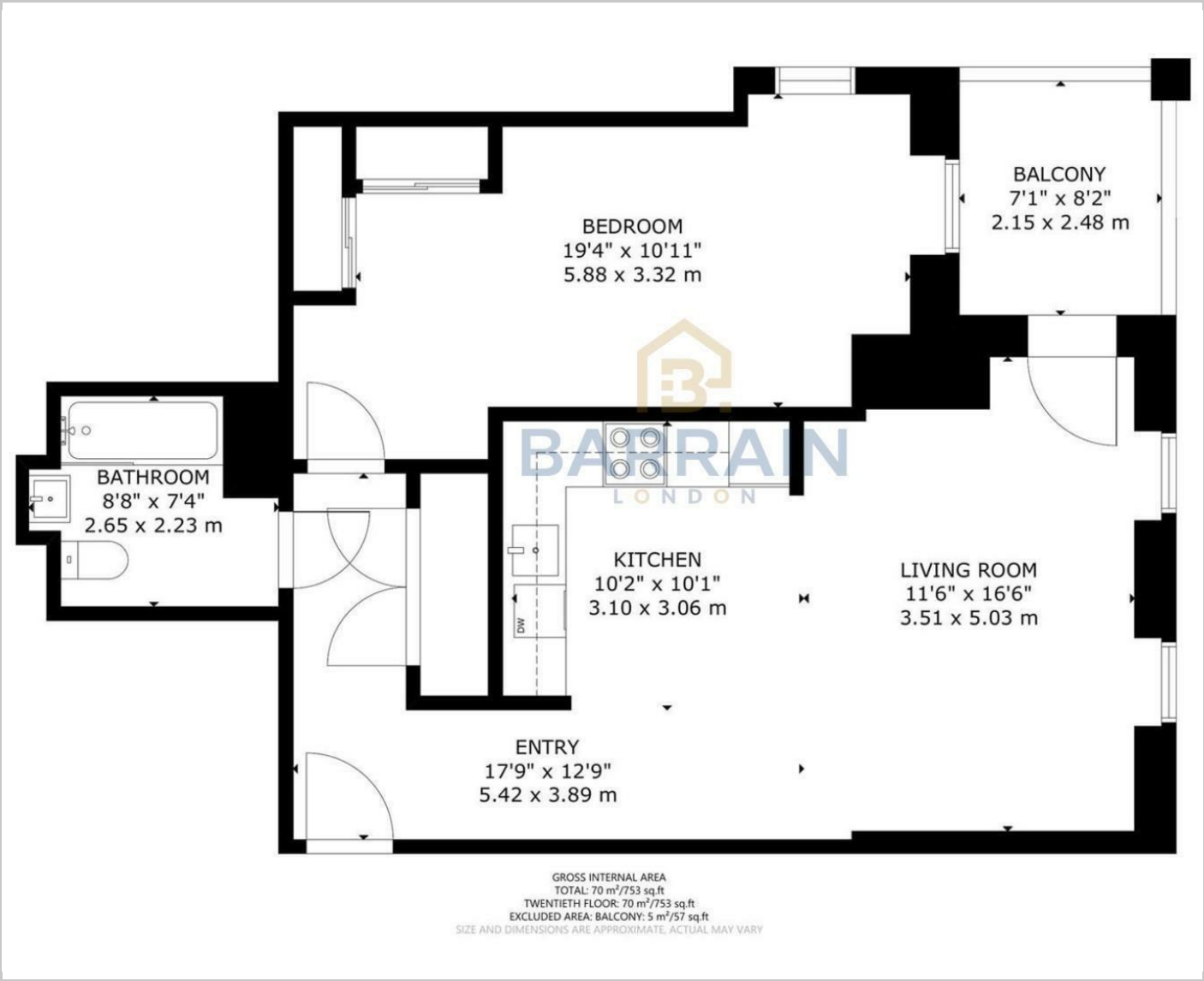


Furnished

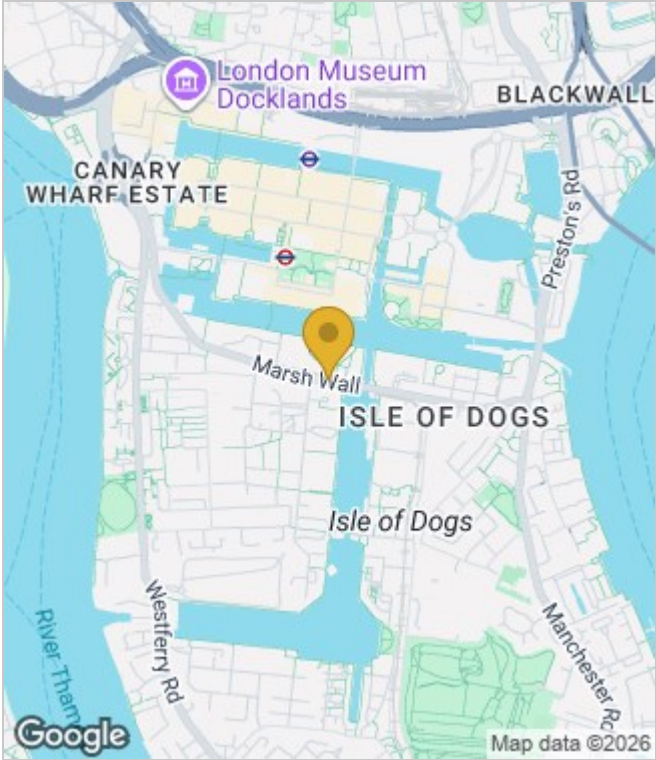
Council Tax Band: E

Available: 24th January 2026

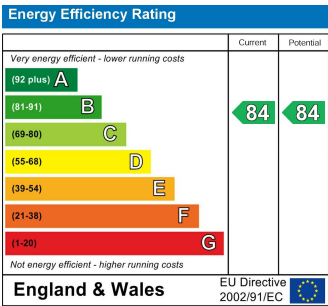
Floor Plans



Area Map



Energy Performance Graph



These particulars, whilst believed to be accurate are set out as a general outline only for guidance and do not constitute any part of an offer or contract. Intending purchasers should not rely on them as statements of representation of fact, but must satisfy themselves by inspection or otherwise as to their accuracy. No person in this firms employment has the authority to make or give any representation or warranty in respect of the property.