



47 Christopher Drive, Chippenham, SN15 3UT

A much improved and well presented three bedroom semi detached house ideally situated in a cul-de-sac on the popular Pewsham development offering easy access to a wide range of amenities. The ground floor accommodation offers an entrance, sitting room opening through to the dining with French doors to the garden which in turn opens into a modern refitted kitchen with built-in oven and hob. The first floor then has two double bedrooms, third bedroom and a refitted shower room. Other benefits include uPVC double glazing and gas central heating. The property has a generous frontage with driveway parking and a gravelled area providing two further parking spaces. The gardens then extend to the side and rear with the side gravelled area having a large shed and the rear garden has a patio area and lawn.

Situation

The property is situated on the Pewsham development within walking distance of the town centre and its many amenities. The development boasts local shops, a doctors surgery, junior school, public house and community centre. Chippenham mainline rail station is close by, as well as M4 J.17 c. 5 miles providing swift commuting links to Swindon, Bath and Bristol.

Accommodation Comprises

Canopied Porch

Double glazed entrance door to:

Entrance Hall

Double glazed window to side. Radiator. Stairs to first floor. Dado rail. Door to:

Sitting Room

Double glazed window to front. Radiator. Understairs storage cupboard. Coving. Wooden laminate flooring. Doorway through to:

Dining Room

Double glazed French doors to rear. Radiator. Coving. Dado rail. Wooden laminate flooring. Opening to:

Refitted Kitchen

Double glazed window to rear. Double glazed door to rear garden. Range of drawer and cupboard base units with matching wall mounted cupboards. Worksurfaces with upstands and inset one and a half bowl single drainer stainless steel sink unit with chrome mixer tap. Built-in electric oven and hob with splashback and stainless steel extractor over. Space and plumbing for washing machine. Space for fridge/freezer and tumble drier. Wall mounted gas fired combination boiler. Wood laminate flooring.

From the town centre proceed up The Causeway then right at the roundabout. At the next roundabout turn left onto Pewsham Way then at the third roundabout take a left into King Henry Drive. Take the second right into Christopher Drive.

GOODMAN WARREN BECK

64 Market Place
Chippenham, Wiltshire SN15 3HG
Tel 01249 444449 | Fax 01249 448989
Email info@goodmanwb.co.uk

£299,950

Landing

Double glazed window to side. Cupboard. Access to roof space. Doors to:

Bedroom One

Double glazed window to front. Radiator. Coving.

Bedroom Two

Double glazed window to rear. Radiator. Coving.

Bedroom Three

Double glazed window to front. Radiator. Stair bulkhead.

Refitted Shower Room

Obscure double glazed window to rear. Ladder radiator. Corner shower cubicle. Vanity wash basin with chrome mixer tap, tiled splashback and drawer under. Close coupled WC. Coving.

Outside

Front Garden

Generous frontage with tarmac driveway providing off road parking and remainder laid to gravel providing further off road parking with path to front door. Gated side access to garden.

Side Garden

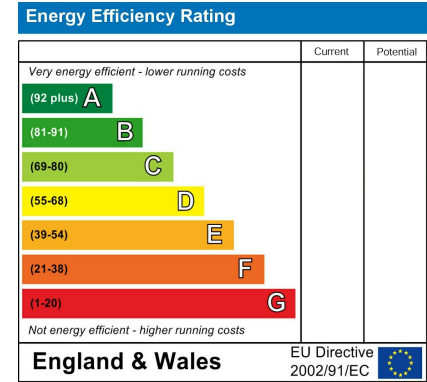
Gravelled area with path, large shed and outside tap.

Rear Garden

Fully enclosed by wooden fencing. Patio area with lawn beyond and shrubs.

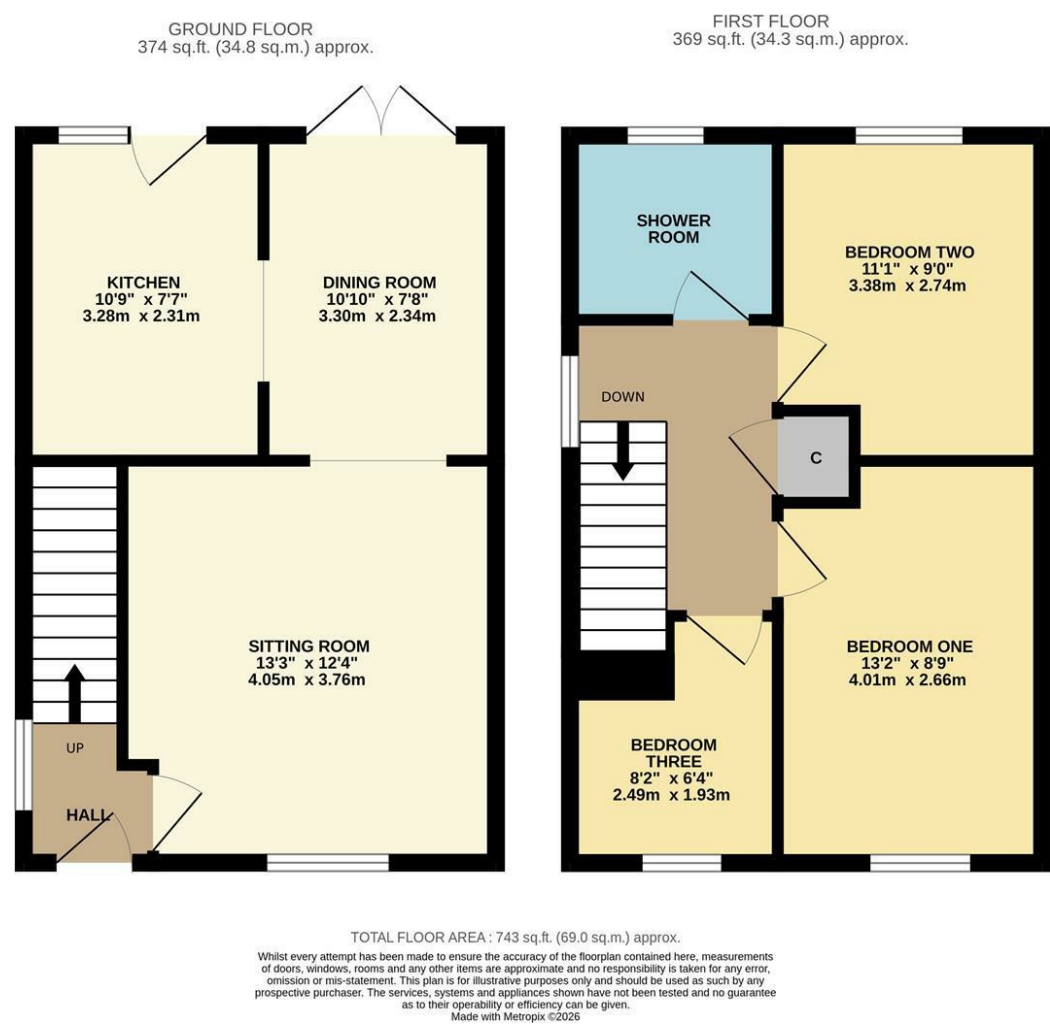
Directions

ENERGY PERFORMANCE GRAPHS



Council Tax Band: C

Tenure: Freehold



DISCLAIMER: These particulars, whilst believed to be accurate are set out as a general outline only for guidance and do not constitute any part of an offer or contract. Intending purchasers should not rely on them as statements of representation of fact, but must satisfy themselves by inspection or otherwise as to their accuracy. No person in this firm's employment has the authority to make or give any representation or warranty in respect to this property. We have not carried out a detailed survey not tested the services, appliances and specific fittings. All measurements and distances are approximate only. Room sizes should not be relied upon for carpets and furnishings. References to the tenure of the property are based on information supplied by the seller. The agent has not had sight of the title documents. A buyer is advised to obtain verification from their solicitor. Your home is at risk if you do not keep up repayments on a mortgage or other load secured on it. Floor plans (not to scale, for illustrative purposes only)