



**Millers Lane, Suffolk, IP27 0LT**

**Rent - £1,550 PCM      Deposit - £1,788**

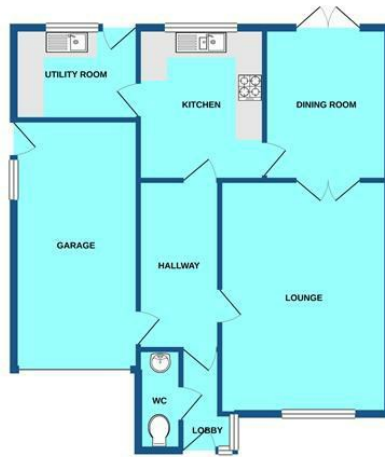
Ideal for USAF Tenants!! A modern and extremely well presented 4 bedroom executive detached house located on a popular and sought after development within the Suffolk market town of Brandon.

- MODERN DETACHED HOUSE
- TWO RECEPTION ROOMS
- MAIN BEDROOM WITH EN-SUITE
- FAMILY BATHROOM
- AVAILABLE NOW
- SPACIOUS ACCOMMODATION
- KITCHEN WITH SEPARATE UTILITY ROOM
- THREE FURTHER BEDROOMS
- POPULAR LOCATION
- CONVENIENT FOR USAF MEMBERS

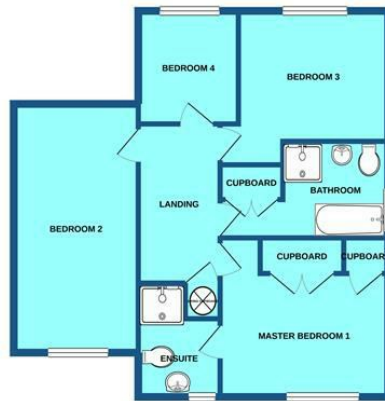


Council Tax Band: D - EPC Rating: C 73

GROUND FLOOR  
811 sq. ft. (75.3 sq. m.) approx.



1ST FLOOR  
725 sq. ft. (67.3 sq. m.) approx.



TOTAL FLOOR AREA: 1535 sq. ft. (142.6 sq. m.) approx.

Whilst every attempt has been made to ensure the accuracy of the floorplan contained here, measurements of doors, windows, rooms and any other items are approximate and no responsibility is taken for any error, omission or mis-statement. This plan is for illustrative purposes only and should be used as such by any prospective purchaser. The services, systems and appliances shown have not been tested and no guarantee as to their operability or efficiency can be given.  
Made with Metropex 5/2020

