



Beulah Hill, SE19

£700,000

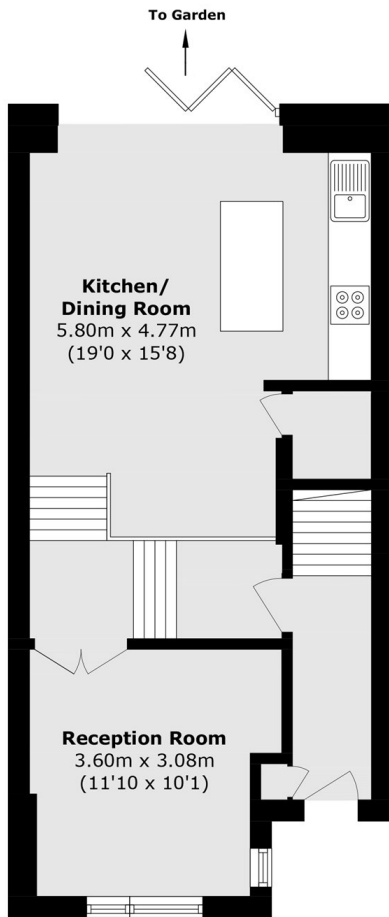
A freehold three bedroom three bathroom family home spread over three generous floors, with the added benefit of an allocated parking space and electric car charging. The houses have a highly energy efficient design, including solar panels, air source heat pumps & underfloor heating.

Upper Norwood is a vibrant community perched atop one of London's highest points, offering sweeping panoramic views across the city. Rich in history and culture, the area is known for its leafy streets, Victorian architecture, and a strong sense of community. Residents enjoy excellent transport connections, with Crystal Palace and Gipsy Hill stations nearby, providing swift access to London Bridge and London Victoria.

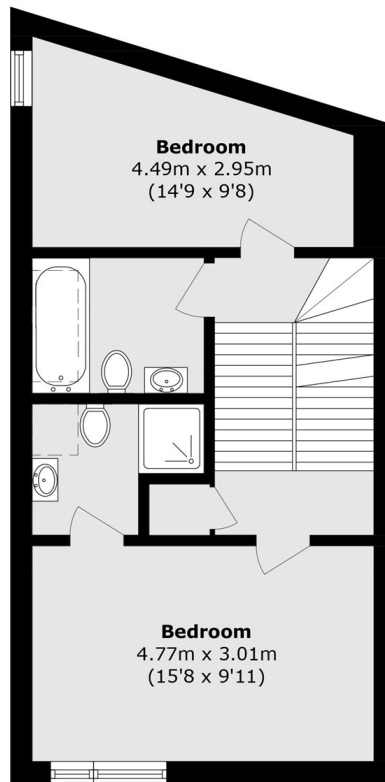
Features

- Allocated Off Street Parking
- Three Bedrooms
- Three Bathrooms
- Freehold Family Homes
- Energy Efficient Design
- Solar Panels
- Air Source Heat Pump
- Underfloor Heating

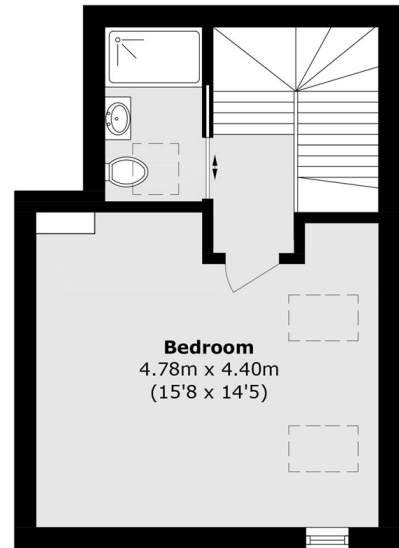
Beulah Hill, Crystal Palace, SE19



Ground Floor



First Floor



Second Floor

Total area (approx.): 124.8 sq. m (1343.3 sq. ft)