



## Dominion House, 59 Bartholomew Close, London, EC1A 7BF

 **2 Bedrooms**

 **1 Bathroom**

 **1 Reception Room**

**Price: £1,425,000**



# Dominion House, London, EC1A

Leasehold (987 years remaining)

A beautifully proportioned apartment with a generous private terrace overlooking tranquil communal grounds in the heart of the historic Barbican. This bright first-floor residence combines contemporary City living with the charm of one of London's most distinctive neighbourhoods.

## Key Features

- 2 Bedrooms, 2 Bathrooms
- Beautifully presented throughout
- Excellent location
- Council Tax: **G**
- Service Charge: **£9,500 P/A**
- Ground Rent: **£906 P/A**
- Good transport connection
- EPC: **B**

This generously proportioned two-bedroom apartment spans over 1,000 square feet and is bathed in natural light throughout. The open-plan kitchen and reception room creates an inviting entertaining space that flows seamlessly onto the property's standout feature: a large private terrace overlooking the beautiful internal grounds. This outdoor space transforms the apartment into a rare City residence where indoor and outdoor living merge effortlessly. Both double bedrooms are well-appointed, complemented by two modern bathrooms that serve the layout with style and practicality.

The location places you at the cultural heart of the City, with the Barbican Centre's world-class arts programming, historic Smithfield Market, and the magnificence of St Paul's Cathedral all within easy reach. The neighbourhood retains a distinctive character, with its medieval street pattern and mix of ancient and modern architecture creating an atmosphere unlike anywhere else in London.



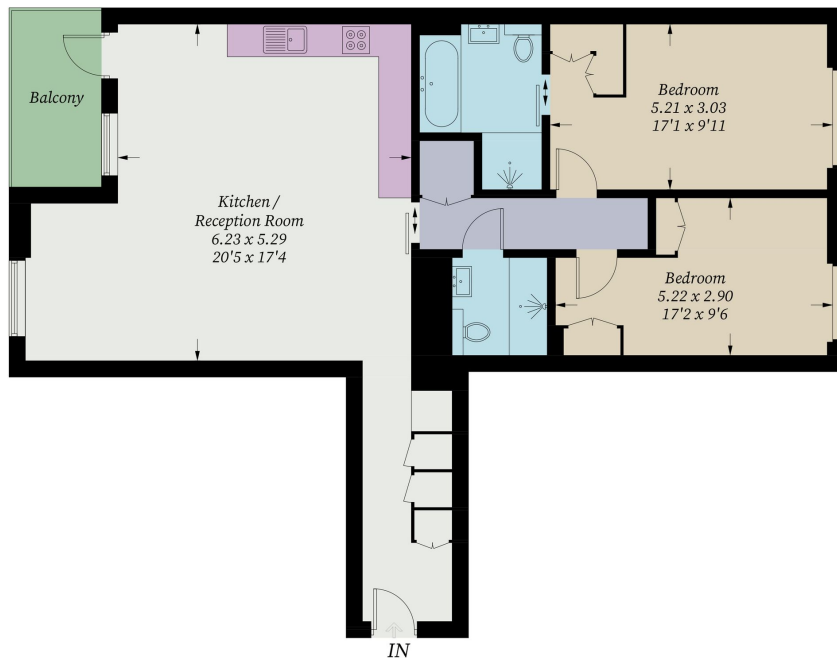






## Dominion House, EC1A

Approximate Gross Internal Area = 95.3 sq m / 1025.8 sq ft



### First Floor

Illustration for identification purposes only, measurements are approximate, not to scale. Fourlabs.co © (ID1309412)

The Walbrook Building  
London, EC4N 8AF  
Tel: 020 7715 9725

Sales, Lettings & Property Management

[residential.jll.co.uk](http://residential.jll.co.uk)

