



Connells

Bewdley Grove
Broughton MILTON KEYNES



Property Description

A well-presented home offering bright and practical living. The entrance hall features a useful storage cupboard and radiator. The lounge is light and airy with a charming Juliet balcony.

The fitted kitchen provides ample storage with wall and base units, gas hob, oven, extractor, steel sink, combi boiler, and plumbing for white goods.

There are two bedrooms, both with double glazed windows and radiators. The bathroom includes a bath with overhead shower, WC, wash hand basin, heated towel rail, and a double glazed window.

Further benefits include an allocated parking space for one vehicle.

Entrance Hall

Handy storage cupboard with dryer. Radiator

Lounge

Bright and airy space with a charming Juliet balcony. Radiator.

Kitchen

Well-appointed kitchen featuring a steel sink, gas hob with extractor, oven, and a range of wall and base units. Combi boiler. Plumbing for white goods. With double glazed windows.

Bedroom One

Bright double bedroom with double glazed window and radiator.

Bedroom Two

Light-filled bedroom with double glazed window and radiator.

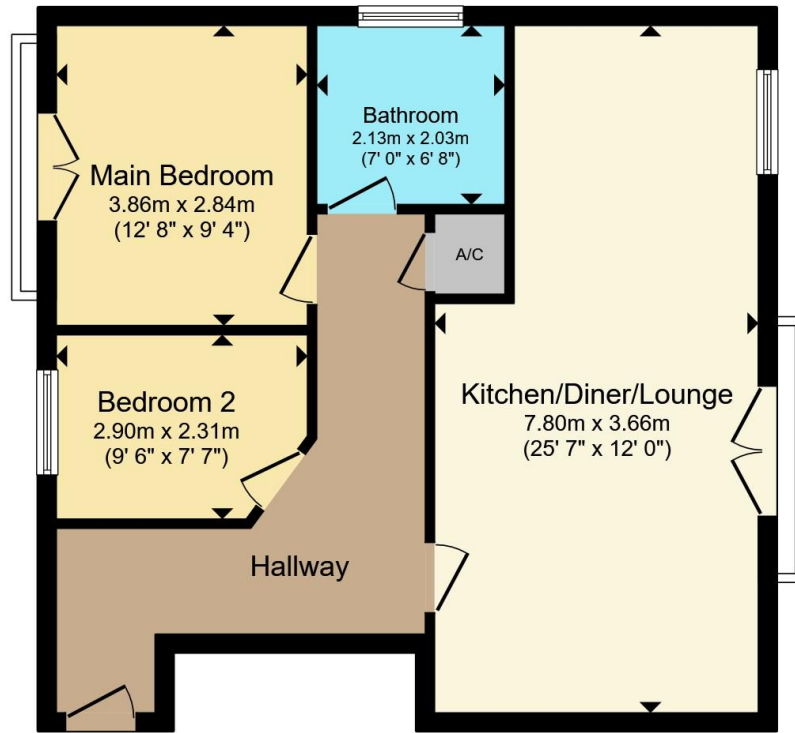
Bathroom

Stylish suite with bath and overhead shower, WC, wash hand basin, and heated towel rail. Double glazed window.

Parking

Allocated parking for one space





Total floor area 58.9 m² (634 sq.ft.) approx

This floor plan is for illustrative purposes only. It is not drawn to scale. Any measurements, floor areas (including any total floor area), openings and orientation are approximate. No details are guaranteed, they cannot be relied upon for any purpose and they do not form part of any agreement. No liability is taken for any error, omission or misstatement. A party must rely upon its own inspection(s). Powered by www.propertybox.io



To view this property please contact Connells on

T 01908 691606
E walnuttree@connells.co.uk

26A Fyfield Barrow The Walnut Tree Local Centre Walnut Tree

EPC Rating: C Council Tax Band: B

Service Charge: 692.13 Ground Rent: Ask Agent

Tenure: Leasehold

view this property online [connells.co.uk/Property/WNT308188](https://www.connells.co.uk/Property/WNT308188)

This is a Leasehold property with details as follows; Term of Lease 125 years from 01 Jan 2008. Should you require further information please contact the branch. Please Note additional fees could be incurred for items such as Leasehold packs.



1. MONEY LAUNDERING REGULATIONS Intending purchasers will be asked to produce identification documentation at a later stage and we would ask for your co-operation in order that there will be no delay in agreeing the sale. 2. These particulars do not constitute part or all of an offer or contract. 3. The measurements indicated are supplied for guidance only and as such must be considered incorrect. Potential buyers are advised to recheck measurements before committing to any expense. 4. We have not tested any apparatus, equipment, fixtures, fittings or services and it is in the buyers interest to check the working condition of any appliances.

Connells Residential is registered in England and Wales under company number 1489613, Registered Office is Cumbria House, 16-20 Hockliffe Street, Leighton Buzzard, Bedfordshire, LU7 1GN. VAT Registration Number is 500 2481 05.

See all our properties at www.connells.co.uk | www.rightmove.co.uk | www.zoopla.co.uk

Property Ref: WNT308188 - 0004