



Minories, London EC3N
£3,999,995 Leasehold







Description

The Haydon is a collection of stunning newly built apartments, ideally located within The City Square Mile, and benefitting from a host of luxury interior finishes throughout. The building also offers a plethora of communal amenities, and many apartments benefit from outdoor space and skyline views.

With a remaining selection of Studios, 1, 2 and 3 bedroom apartments available to buy prices range from £750,000 to £4,200,000.

Located in the hub of The City, and close to iconic landmarks Tower Bridge & The Tower of London, The Haydon is positioned in a quiet location within just a few moments' walk of Aldgate (0.1mi), Tower Hill (0.2mi) & Tower Gateway (0.2mi) stations, and within easy reach of a host of world class dining & entertaining options.

Leasehold 456 years (exp. 30/07/2481)
Ground Rent: TBC
Service Charge: Approx. £10,425 pa
Council Tax Band: H
EPC Rating: B

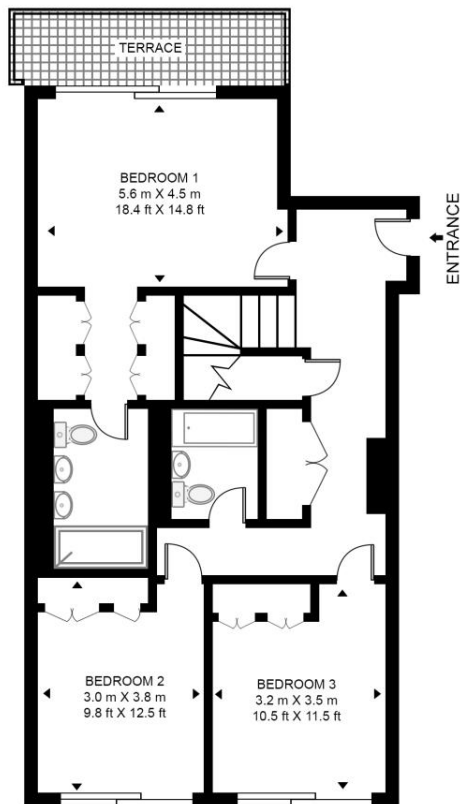
- Duplex penthouse apartment
- 3 Bedrooms
- 2 Bathrooms
- 2 Roof terraces
- Wonderful City views
- Well-proportioned rooms throughout
- Incredible principal bedroom suite
- Luxury high specification throughout
- 24 hr concierge
- Resident's gym, spa pool, and cinema

Floorplan

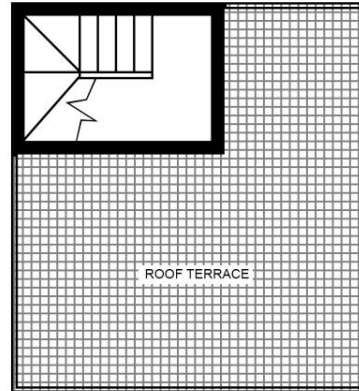
1,390 sq ft | 129 sq m

THE HAYDON, 16 MINORIES

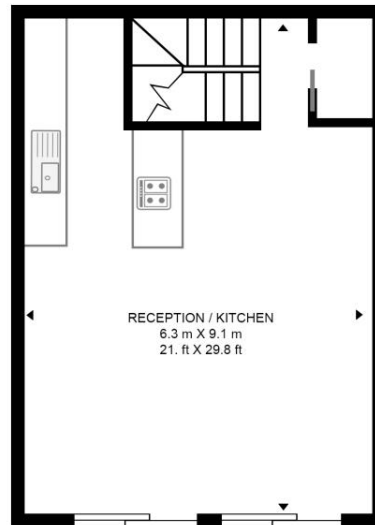
APPROXIMATE GROSS INTERNAL FLOOR AREA 1390 SQ.FT (129.1 SQ.M)



FOURTEENTH FLOOR



ROOF TERRACE



FIFTEENTH FLOOR



This floor plan has been defined by the RICS Code of Measurement. This floor plan and all others are for approximate representative purposes only and upon usage is agreed to as such by the client.

WWW: hdvirtualart.com | TEL: 0203.974.1567 | EMAIL: info@hdvirtualart.com

City
25 Walbrook The Walbrook
Building,
London EC4N 8AF
+4420 7337 4000

Urban living, your way.

jll.co.uk/residential

© 2019 Jones Lang LaSalle IP, Inc. All rights reserved. All information contained herein is from sources deemed reliable; however, no representation or warranty is made to the accuracy thereof.

