






CHESTERFORD GARDENS

Hampstead, NW3



AN EXCEPTIONAL, SEMI- DETACHED, VICTORIAN HOUSE.

Having undergone a complete refurbishment and reconfiguration
overseen by MWA Architects, this superb, turnkey family home
measures approximately 5,077 sq ft.

			EPC
6	5	3	C

Local Authority: London Borough of Camden

Council Tax band: H

Tenure: Freehold

Asking Price: £9,250,000



STUNNING CONTEMPORARY FINISHES THROUGHOUT.

On the ground floor there is a media/family room that leads to a sizeable eat-in kitchen by Lanserring with Gaggenau appliances. In addition there is a formal reception room with large glass sliding doors that lead to a magnificent, fully manicured three tiered garden complete with fully equipped outdoor kitchen, bespoke timber childrens playground and heated canopy system. There is also a study, guest cloakroom and boot room that can be accessed through the side gate.







The first floor is mainly dedicated to a sumptuous principal suite complete with two dressing rooms and a large ensuite bathroom. There is also a further ensuite guest bedroom on this floor. On the second floor there are three further double bedrooms and one single bedroom (two with ensuite bathrooms) and a family bathroom- this floor has air conditioning throughout. The lower ground floor level houses the plant room as well as a utility room. There are stunning contemporary finishes throughout the house such as polished plaster, custom marble sinks and engineered timber floors. In addition, the house has the benefit of a Control4 system for full control and entertainment management, a Sonos Audio System and Lutron lighting.



Chesterford Gardens is an enviably located, tree lined road only moments from all the amenities in Hampstead Village as well as Hampstead Underground Station (Northern Line) and Hampstead Heath.

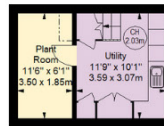




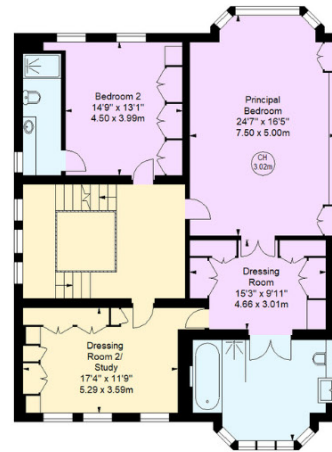




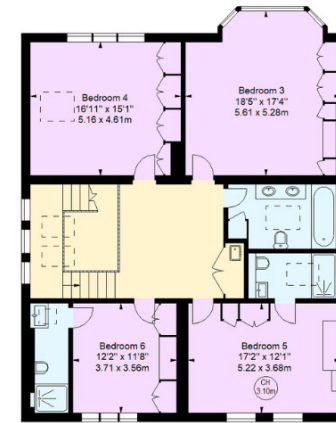
Key :
CH - Ceiling Height



Lower Ground Floor



First Floor



Second Floor



Approximate Gross Internal Area = 472 sq m / 5,077 sq ft

This plan is for layout guidance only. Not drawn to scale unless stated. Windows and door openings are approximate. Whilst every care is taken in the preparation of this plan, please check all dimensions, shapes and compass bearings before making any decisions reliant upon them. (ID767266)



We would be delighted
to tell you more.

Katy Brookes
020 7317 7966
katy.brookes@knightfrank.com

Knight Frank Hampstead
58-62 Heath Street, London
NW3 1EN

[knightfrank.co.uk](https://www.knightfrank.co.uk)

Your partners in property

1. Particulars: These particulars are not an offer or contract, nor part of one. You should not rely on statements given by Knight Frank in the particulars, by word of mouth or in writing ("information") as being factually accurate about the property, its condition or its value. Neither Knight Frank nor any joint agent has any authority to make any representations about the property, and accordingly any information given is entirely without responsibility on the part of Knight Frank. 2. Material Information: Please note that the material information is provided to Knight Frank by third parties and is provided here as a guide only. While Knight Frank has taken steps to verify this information, we advise you to confirm the details of any such material information prior to any offer being submitted. If we are informed of changes to this information by the seller or another third party, we will use reasonable endeavours to update this as soon as practical. 3. Photos, Videos etc: The photographs, property videos and virtual viewings etc. show only certain parts of the property as they appeared at the time they were taken. Areas, measurements and distances given are approximate only. 4. Regulations etc: Any reference to alterations to, or use of, any part of the property does not mean that any necessary planning, building regulations or other consent has been obtained. A buyer must find out by inspection or in other ways that these matters have been properly dealt with and that all information is correct. 5. Fixtures and fittings: A list of the fitted carpets, curtains, light fittings and other items fixed to the property which are included in the sale (or may be available by separate negotiation) will be provided by the Seller's Solicitors. 6. VAT: The VAT position relating to the property may change without notice. 7. To find out how we process Personal Data, please refer to our Group Privacy Statement and other notices at <https://www.knightfrank.com/legals/privacy-statement>.

Particulars dated February 2026. Photographs and videos dated February 2026. All information is correct at the time of going to print. Knight Frank is the trading name of Knight Frank LLP. Knight Frank LLP is a limited liability partnership registered in England and Wales with registered number OC305934. Our registered office is at 55 Baker Street, London W1U 8AN. We use the term 'partner' to refer to a member of Knight Frank LLP, or an employee or consultant. A list of members names of Knight Frank LLP may be inspected at our registered office. If you do not want us to contact you further about our services then please contact us by either calling 020 3544 0692, email to marketing.help@knightfrank.com or post to our UK Residential Marketing Manager at our registered office (above) providing your name and address.