



Flat 3, 42 Nevern Square | Earls Court | London | SW5 9PE

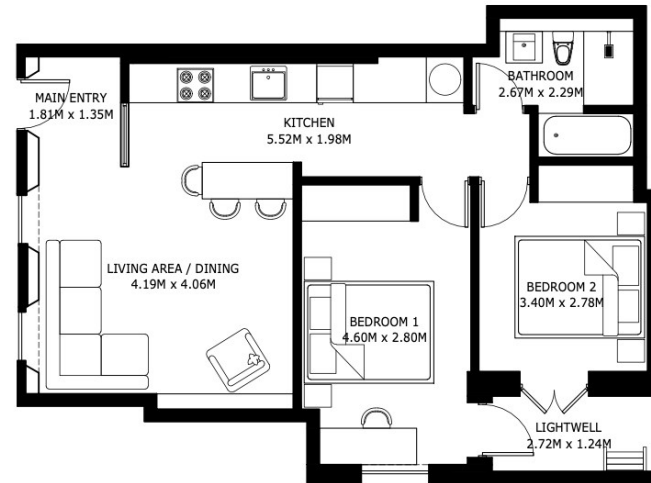
£3,230 Per Month

SÉJOUR

**Flat 3, 42 Nevern Square
| Earls Court
London | SW5 9PE**

This beautifully designed two-bedroom flat, situated on the lower ground floor of the newly completed Nevern Square development, offers a blend of modern elegance and functionality in a prestigious London location.

- Newly renovated flat
- Private terrace
- Furnished in contemporary style
- 2 well proportioned bedrooms
- Access to communal garden
- Modern fitted kitchen with integrated appliances



UNIT 3

GROSS INTERNAL AREA
60.70 SQ.M. / 653.37 SQ.FT.

*SIZES AND DIMENSIONS ARE APPROXIMATE, ACTUAL MAY VARY.

Energy Efficiency Rating		Current	Potential
Very energy efficient - lower running costs			
(92 plus)	A		
(81-91)	B		
(69-80)	C		
(55-68)	D		
(39-54)	E		
(21-38)	F		
(1-20)	G		
Not energy efficient - higher running costs			
England & Wales		69	79
EU Directive 2002/91/EC			

**Council Tax Band C
EPC Rating C**

**10 Cromwell Pl
South Kensington
London
SW7 2JN**

**020 3865 0611
lettings@cityrelay.com**