



Riverside House, Burcot, OX14

Guide Price £325,000

FORTNUMS
ESTATES

www.fortnumsestates.co.uk

Riverside House, Burcot, OX14

Description

This beautifully renovated one-bedroom apartment offers spectacular views across the River Thames and the iconic Wittenham Clumps. Accessed via a private entrance on the ground floor, the property features a convenient storage area and a cloaks cupboard, with stairs leading up to the first floor. The kitchen is a contemporary masterpiece, thoughtfully designed to maximize space and offer exceptional storage. The spacious bedroom boasts bespoke fitted wardrobes, a dedicated dressing area, and a stylish, newly fitted shower room. The separate sitting room offers an ideal layout for both a dining area and a cozy living space, complete with a window seat to enjoy the breathtaking and tranquil riverside views. The grounds of Riverside House are nothing short of extraordinary. Set behind a gated entrance off the Abingdon Road, the meticulously maintained gardens feature manicured lawns, private tennis courts for residents, guest parking, and riverside gardens with shared 24 hour mooring rights, providing the perfect opportunity to indulge in the beauty of the river and enjoy a range of outdoor activities in this idyllic setting.

Tenure & Possession

Leasehold with 970 unexpired years remaining and offered with vacant possession and no onward chain.

The development has a formal management company and there is a service charge of £338.60/month





Situation

Nestled in the charming village of Burcot, the property enjoys a wonderfully peaceful setting while remaining conveniently close to the thriving market towns of Abingdon and Wallingford, both offering an excellent range of shops, cafés, and everyday amenities. Just a short stroll away, The Chequers is a much-loved local pub, renowned for its award-winning food and welcoming atmosphere—perfect for relaxed evenings or entertaining guests. Nearby, the picturesque village of Dorchester-on-Thames provides a delightful selection of independent shops, cosy pubs and hotels, along with the magnificent Dorchester Abbey, a true centrepiece of village life steeped in history. For commuters, Didcot Parkway railway station is approximately six miles away, offering fast and direct services to Oxford, Reading, and London Paddington in as little as 40 minutes, while the M40 is also easily accessible. The nearby town of Abingdon, set on the River Thames, is a vibrant and historic destination, highly regarded for its excellent schooling options, including Abingdon School and St Helen and St Katharine, among others—further enhancing the area’s strong appeal for families seeking both lifestyle and educational excellence.



Services

All mains services are connected.

Viewing arrangements

Strictly by appointment with Fortnums Estates.

Council tax

Council tax band D amounting to £2542.44 for the year 2025/26.

Local Authority

South Oxfordshire District Council

Advisory notes

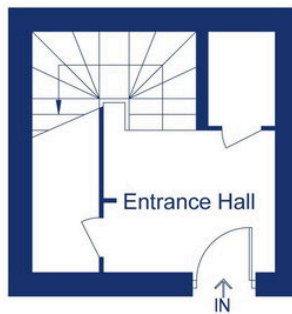
Fortnums Estates has not tested any equipment, fixture, fittings or services, and so does not verify they are in working order. A buyer must confirm the information is correct and be verified by their own solicitors and not rely on the information within these particulars. The measurements supplied for the floorplan are for general guidance. A buyer is advised to re-check the measurements themselves before committing themselves to any expense. Nothing concerning the type of construction or the condition of the structure is to be implied from the photograph of the property. The sales particulars may change in the course of time, and any interested party is advised to make final inspection of the property prior to exchange of contracts.





Garage
5.79m x 2.65m
19'0 x 8'8

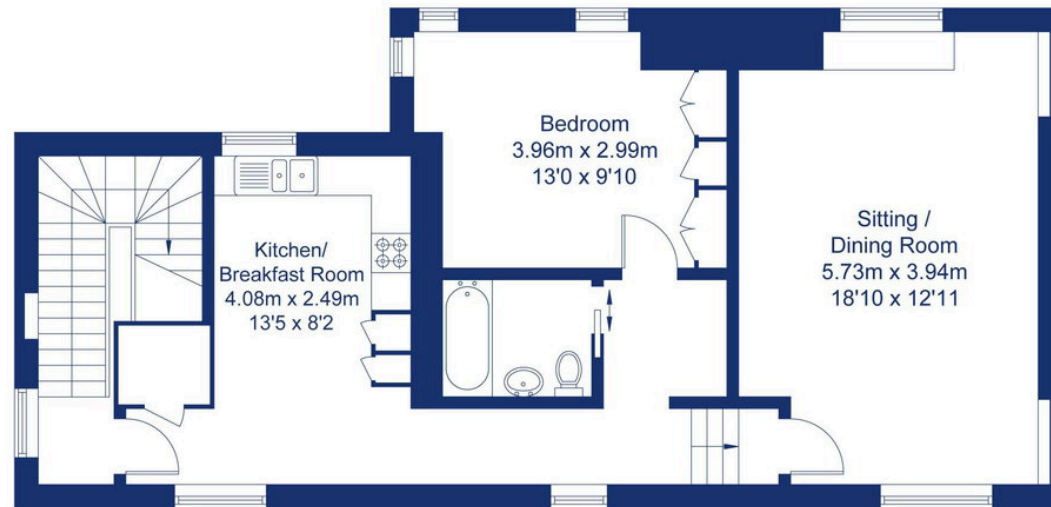
(Not Shown In Actual
Location / Orientation)



Entrance Hall

↑
IN

Ground Floor



First Floor

Not to scale, for illustration and layout purposes only.
© Mortimer Photography. Produced for Fortnums Estates.
Unauthorised reproduction prohibited.

 01865 745555

 Prama House, 267 Banbury Road, Summertown, Oxford, OX2 7HT

 sales@fortnumsestates.co.uk

Fortnums Estates has not tested any equipment, fixture, fittings or services, and so does not verify they are in working order, therefore the buyer must assume the information given is incorrect. Neither has the Agent checked the legal documentation to verify legal status of the property or the validity of any guarantee. A buyer must assume the information is incorrect, until it has been verified by their own solicitors. The measurements supplied for the floorplan are for general guidance, and as such must be considered as incorrect. A buyer is advised to re-check the measurements themselves before committing themselves to any expense. Nothing concerning the type of construction or the condition of the structure is to be implied from the photograph of the property. The sales particulars may change in the course of time, and any interested party is advised to make final inspection of the property prior to exchange of contracts.