



Guide Price
£325,000

Leasehold

2x  1x  1x 

**Grosvenor Court, Epsom
Road, Leatherhead,
Surrey, KT22**

OVER 60?

Secure this property
for up to **59% less!**

cubitt&west
Helping you move forwards



Main features

- Recently renovated throughout
- Ample parking with the addition of a garage
- Well connected for the M25, transport links and green space
- Close to great local schools
- Nestled in a charming neighbourhood



Accommodation

GROUND FLOOR

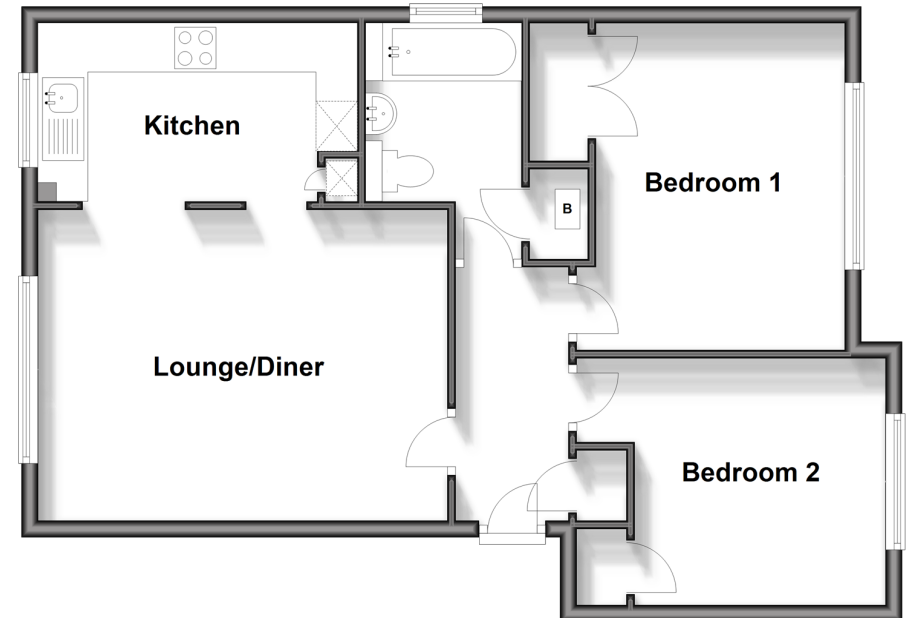
Hallway
 Lounge/Diner: 15'1 x 12'5 (4.60m x 3.79m)
 Kitchen: 12'7 x 7'1 (3.84m x 2.16m)
 Bedroom 1: 13'3 x 9'1 (4.04m x 2.77m)
 Bedroom 2: 9'1 x 9'1 (2.77m x 2.77m)
 Bathroom

OUTSIDE

Communal Gardens
 Garage

Ground Floor

Approx. 63.3 sq. metres (681.2 sq. feet)



Call Leatherhead - 01372 373780 ■ CubittAndWest.Co.Uk

- Legal advice should be taken to verify fixtures/fittings, planning, alterations and/or lease details
- Appliances & services are untested, dimensions are approximate and floor plans are not to scale
- Through a Homewise Home For Life Plan people aged 60+ can secure this property for up to 50% less, by purchasing a Lifetime Lease.



21108120/20251011/MB1/NH