



West Point, Wellington Street, Leeds

£1,250 PCM

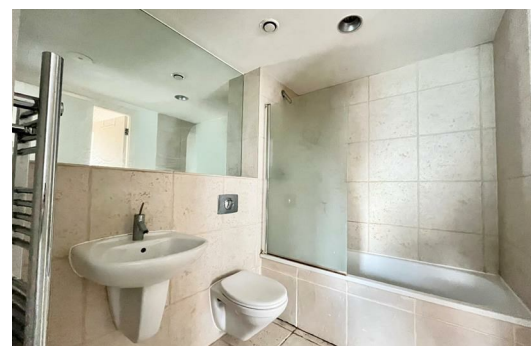
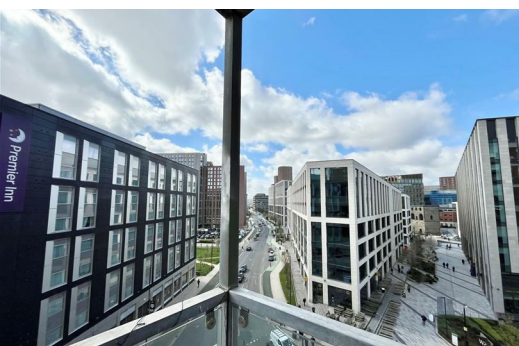
Finally, a city centre apartment that has everything you could want.

This fully furnished, 2-bedroom apartment in the heart of the city is available right now! With its huge balcony, 2 double bedrooms and quality furnishings – it's certainly one not to be missed, and it'll go super quick! It also comes with parking! Step inside the home and you'll notice how bright and welcoming the rooms are – that's down to the fantastic floor-to-ceiling windows – which are also doors to the balcony, as well as the bright, clean décor throughout.

The master bedroom, double in size, boasts impressive natural light and city views – ideal for lazy Sunday mornings in bed. It also features a handy fitted wardrobe, and direct access to the balcony. Trust us – you'll love this space. Not only this, it also benefits from its own en-suite with a walk-in shower. Step out on to the balcony of dreams, which stretches full width of the apartment, and take in the jaw-dropping views of Leeds city centre. This is a real special touch!

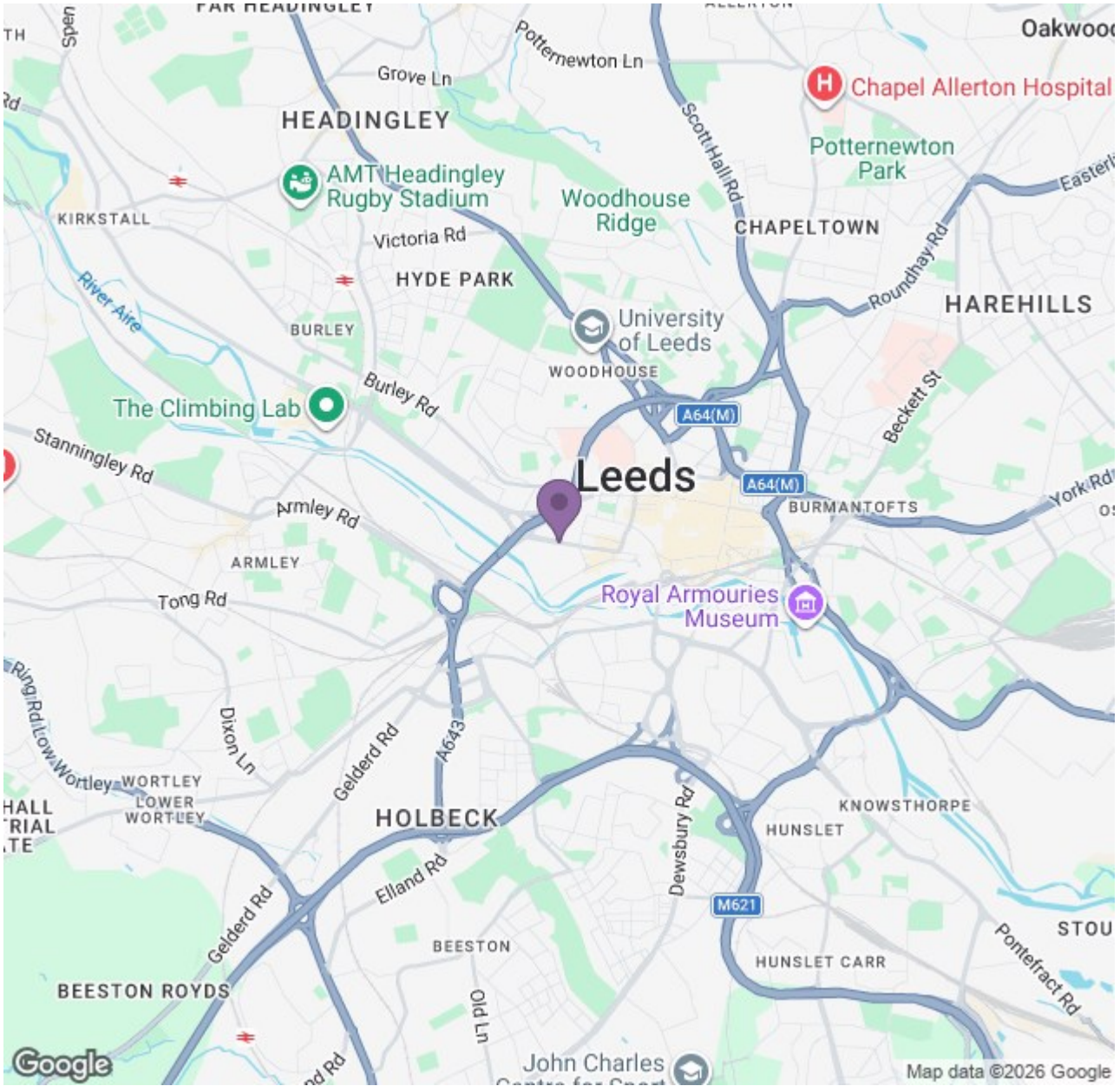
The second bedroom is also a great double size, has a carpeted floor and gives a bright ambience. Again, the furniture is generous and provides a stand-alone wardrobe as well as a quality double bed and mattress, and two bedside drawers. With the master bedroom having an en-suite, the main bathroom can be utilised perfectly by the occupier of the second bedroom – and guests of course. It features a bath with an overhead shower and has plenty of floorspace.

The location speaks for itself... If you're a commuter or enjoy taking weekend trips to other destinations, then you'll be pleased to know that the train station is just moments away by foot. The very best of the city is also right on your



Ascend

Built on higher standards



Energy Efficiency Rating		Environmental Impact (CO ₂) Rating	
Current	Target	Current	Target
<p>Energy Efficiency Rating: 76 (Current) / 88 (Target)</p> <p>Environmental Impact (CO₂) Rating: 78 (Current) / 78 (Target)</p>			
<p>England & Wales</p>			

Ascend

Built on higher standards