

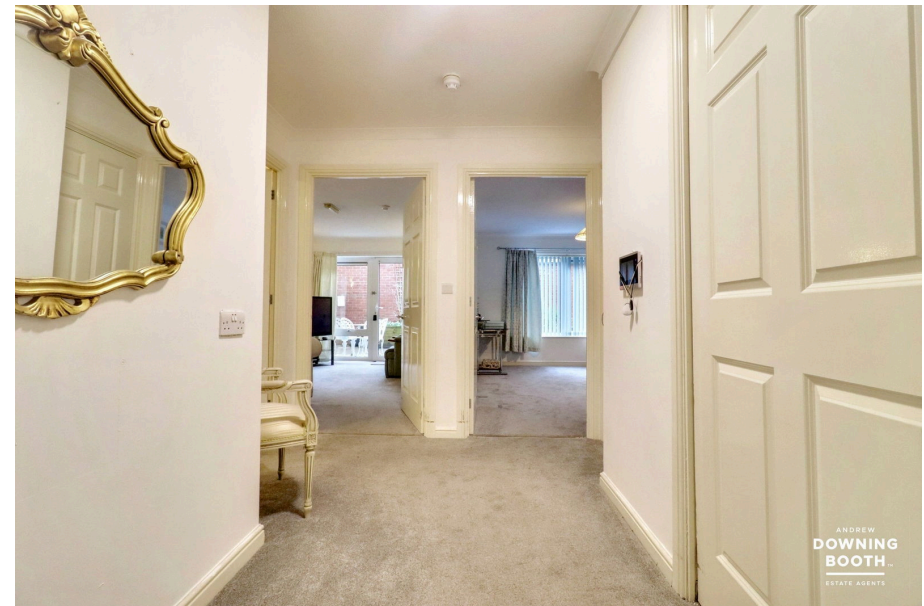


Beacon Park Village.
Retirement Living

Beacon Park Village, Lower Sandford Street, Lichfield, WS13 6JN - City Centre Location

Shared Ownership £165,000

🛏 1 🚿 1 🚗 1



Welcome to Beacon Park Village on Lower Sandford Street – a beautifully maintained retirement development exclusively for the over 60s - offering a well-presented one-bedroom shared ownership apartment designed for comfort, convenience, and independent living. Coming to market at a fixed 75% share.

This apartment is ideally situated on Lower Sandford Street in the heart of Lichfield, just a short walk from the historic city centre. Residents can enjoy easy access to a variety of local amenities, including shops, cafés, restaurants, and the popular Beacon Park with its beautiful gardens and open spaces. Excellent transport links are also nearby, with Lichfield City and Trent Valley train stations providing convenient connections to Birmingham and beyond. This sought-after location perfectly combines peaceful, community-style living with the convenience of city amenities right on your doorstep.

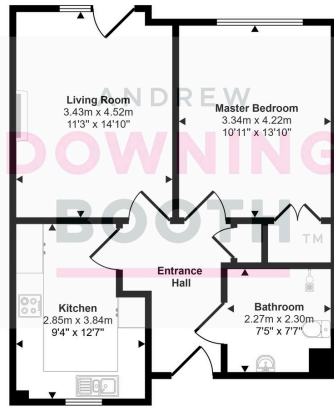
The accommodation is set across one floor and comprises a welcoming entrance hall, a bright living room, a fitted kitchen, a spacious master bedroom, and a modern shower room. Beacon Park Village offers an excellent range of on-site facilities, including a variety of shops, a hairdressing salon, and a beautifully maintained communal garden area. The complex also benefits from lifts providing easy access to all floors, ensuring comfort and convenience for residents.

This delightful apartment offers a wonderful opportunity to enjoy comfortable and convenient retirement living – early viewing is highly recommended to fully appreciate all that Beacon Park Village has to offer.

We understand the property to be leasehold, with a lease of 125 years remaining. We understand there to be a service charge payable, with the most recent figures advised to be in the region of £746.41 per month. We also understand there to be no ground rent payable. All tenure information provided is in good faith only and should ultimately be verified by any prospective buyer's solicitor.



Approx Gross Internal Area
55 sq m / 597 sq ft



Floorplan

This floorplan is only for illustrative purposes and is not to scale. Measurements of rooms, doors, windows, and any items are approximate and no responsibility is taken for any error, omission or mis-statement. Icons of items such as bathroom suites are representations only and may not look like the real items. Made with Made Snappy 360.

- No Upward Chain
- Superb Location - Walking Distance To Lichfield City Centre
- One Spacious Bedroom
- EPC Rating: B
- Ground Floor Over 60's Retirement Apartment
- Excellent Range Of On-Site Facilities
- Contemporary Shower Room
- Council Tax Band: B

