



Guide Price
£325,000

Freehold

3x  1x  1x 

**Brook Lane, Snodland,
Kent, ME6**

OVER 60?

Secure this property
for up to **59% less!**

Wards
Helping you move forwards



Main features

- Great size family home which is ready to move straight into
- Excellent travel links nearby
- Handy garage to the rear with parking in front
- Enjoy the sunny garden - perfect for relaxing and entertaining
- The ideal kitchen/diner which would suit any budding chef

Accommodation

GROUND FLOOR

Entrance Porch

Lounge: 15'3 x 11'3 (4.65m x 3.43m)

Kitchen/Diner: 15'10 x 11'5 (4.83m x 3.48m)

FIRST FLOOR

Landing

Bedroom 1: 11'4 x 8'10 (3.46m x 2.69m)

Bedroom 2: 8'6 maximum x 8'3 (2.59m x 2.52m)

Bedroom 3: 8'8 x 8'5 (2.64m x 2.57m)

Bathroom: 6'10 x 5'4 (2.08m x 1.63m)

OUTSIDE

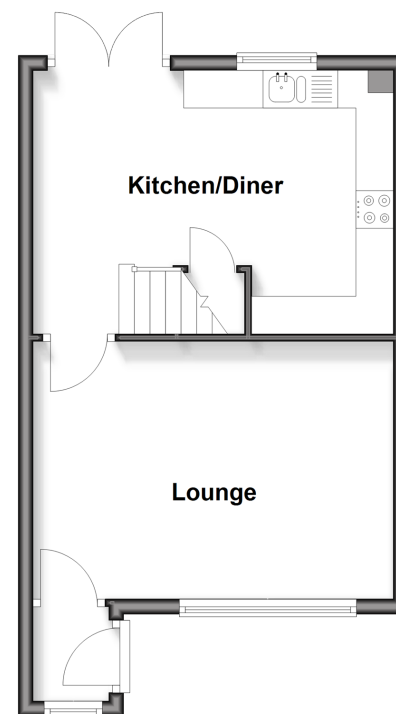
Front and Rear Gardens

Garage En-bloc

Allocated Parking Space

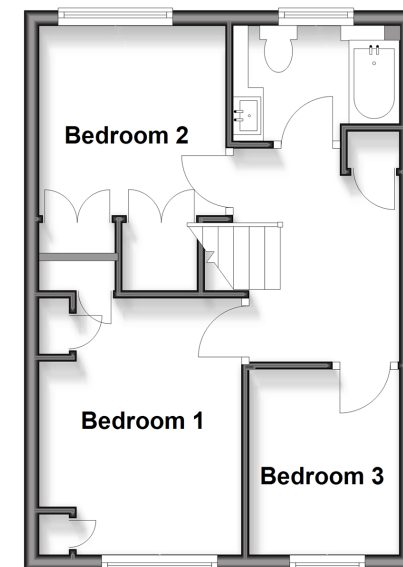
Ground Floor

Approx. 35.2 sq. metres (378.9 sq. feet)



First Floor

Approx. 33.8 sq. metres (364.2 sq. feet)



Call Snodland - 01634 245055 ■ wardsofKent.co.uk

■ Legal advice should be taken to verify fixtures/fittings, planning, alterations and/or lease details
 ■ Through a Homewise Home For Life Plan people aged 60+ can secure this property for up to 50% less, by purchasing a Lifetime Lease.

■ Appliances & services are untested, dimensions are approximate and floor plans are not to scale