



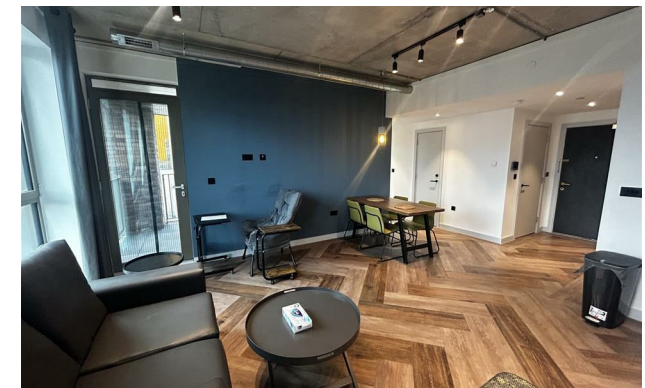
jordanfishwick

Apt 902 Ancoats Gardens, 30 Bendix
£1,650 Per Calendar Month



Ancoats Gardens Manchester M4 5GJ

£1,650 Per Calendar Month



The Property

Available NOW! Fantastic 9th Floor Furnished Two Bedroom, Two Bathroom apartment at Ancoats Gardens. Furnished to a fantastic standard with a private balcony and all utilities and amenities (including wifi) are included in your rent amount!! Fantastic Location just a short walk to Northern Quarter and Shudehill transport station.

Residents of Ancoats Gardens enjoy access to an exclusive range of 5-star amenities:

- Rooftop gardens with city views
- A cutting-edge duplex gym
- Modern co-working lounge
- Coffee stations
- Dedicated concierge service

Tax Band D. EPC Rating B. No Parking.

VIDEO/ PHOTO OFFER NOT ACCEPTED - PLEASE CALL TO BOOK A VIEWING

- Available NOW
- Bills Included in rent (Excluding Council Tax)
- Fully Furnished, High Specification Throughout
- Two Bedrooms
- EPC Rating B
- Council Tax Band D
- Short Walk to Northern Quarter
- Gym, Roof Terrace, Residents' Lounge, Concierge
- No Parking



Energy Efficiency Rating		
	Current	Potential
Very energy efficient - lower running costs		
(92 plus) A		
(81-91) B	84	84
(69-80) C		
(55-68) D		
(39-54) E		
(21-38) F		
(1-20) G		
Not energy efficient - higher running costs		
England & Wales		EU Directive 2002/91/EC





These particulars are believed to be accurate but they are not guaranteed and do not form a contract. Neither Jordan Fishwick nor the vendor or lessor accept any responsibility in respect of these particulars, which are not intended to be statements or representations of fact and any intending purchaser or lessee must satisfy himself by inspection or otherwise as to the correctness of each of the statements contained in these particulars. Any floorplans on this brochure are for illustrative purposes only and are not necessarily to scale.

Offices at: Offices at Chorlton, Didsbury, Disley, Hale, Glossop, Macclesfield, Manchester Deansgate, Manchester Whitworth Street, New Mills, Sale, Wilmslow and Withington