



35 Viscount Drive, Dorset BH23 4JN

£550,000

Mitchells
1963 — TODAY



Viscount Drive, Dorset

A substantial family home of approximately 1200 sq.ft. situated in a great location within walking distance of the beach presented in immaculate condition with quality fixtures and fittings throughout.



The Property

- Spacious four bedroom detached freehold family house of approximately 1200 sq.ft
- Luxury fixtures and fittings with neutral décor and quality floor coverings throughout
- Large master bedroom with fitted wardrobes and en-suite shower room
- Through sitting/dining room with access onto the garden
- Modern fitted kitchen
- Separate play room/ study with access to the garden
- Integral garaging and block paved driveway
- Gas fired central heating and UPVC double glazed windows
- Landscaped, south facing rear garden
- Excellent location within the Mudeford schools catchment area

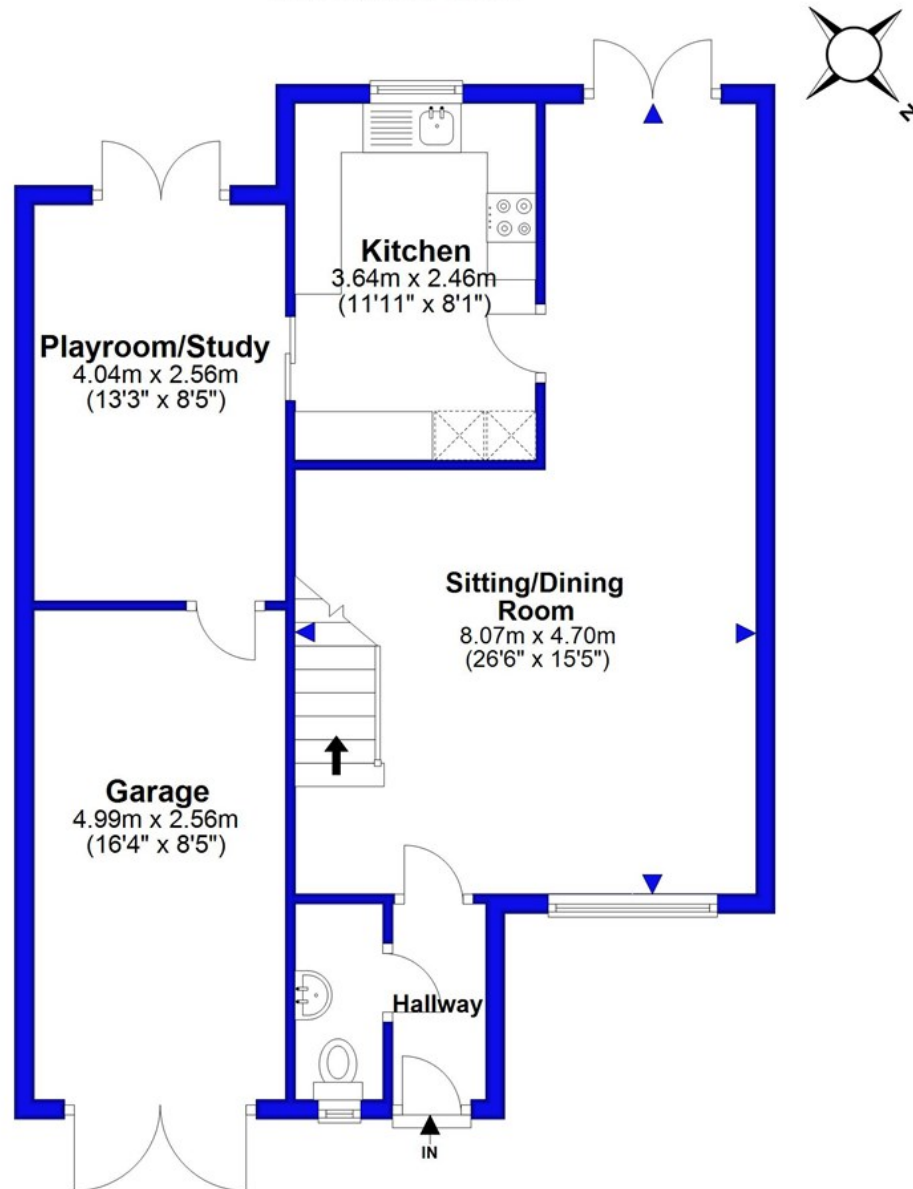




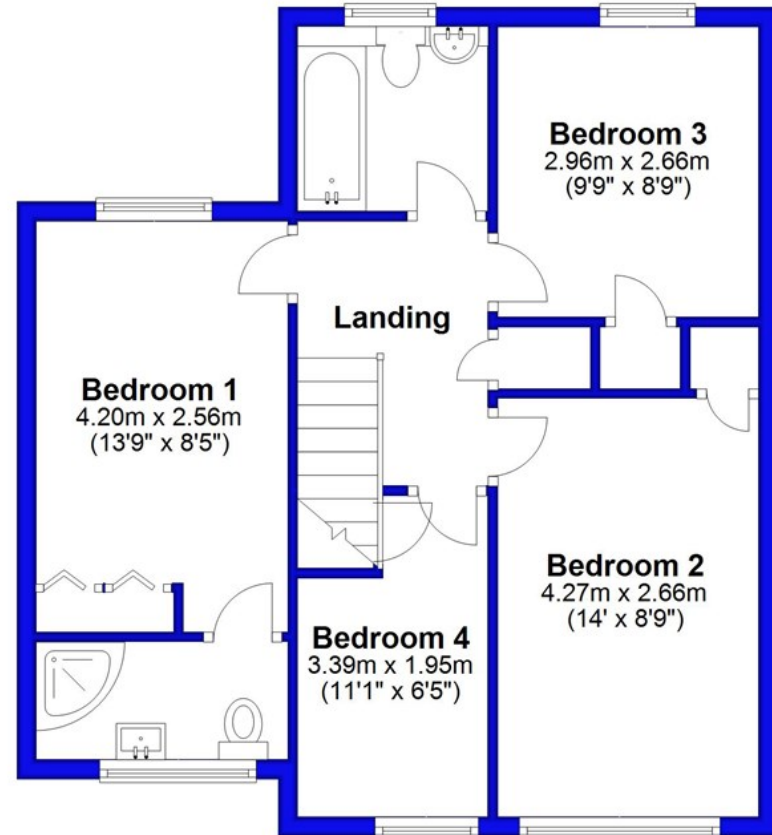
Location



Ground Floor



First Floor



Approx Gross Internal Areas
House: 105.4 sqm / 1134.5 sqft
Garage: 13.6 sqm / 146.4 sqft

Total Approx Gross Area: 119.0 sqm / 1280.9 sqft





www.mitchells.uk.com
Mudeford@mitchells.uk.com
01202 499295

Mudeford
112-114 Cambridge House Stanpit
Christchurch
BH23 3ND

