



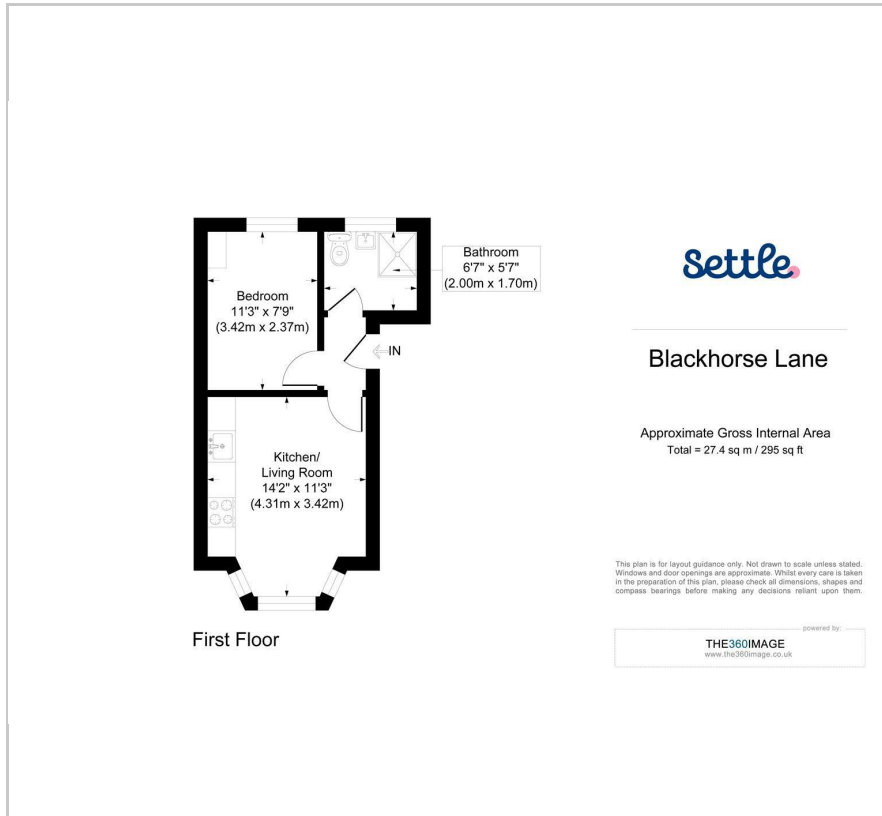
Blackhorse Lane

, London, E17 6AD

£1,300 Per month



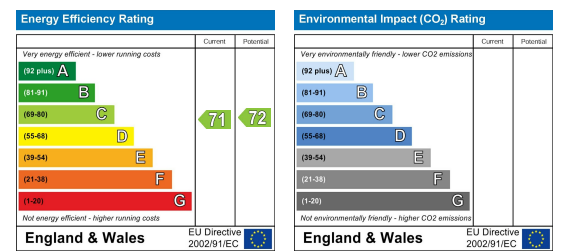
Floor Plan



Area Map



Energy Efficiency Graph

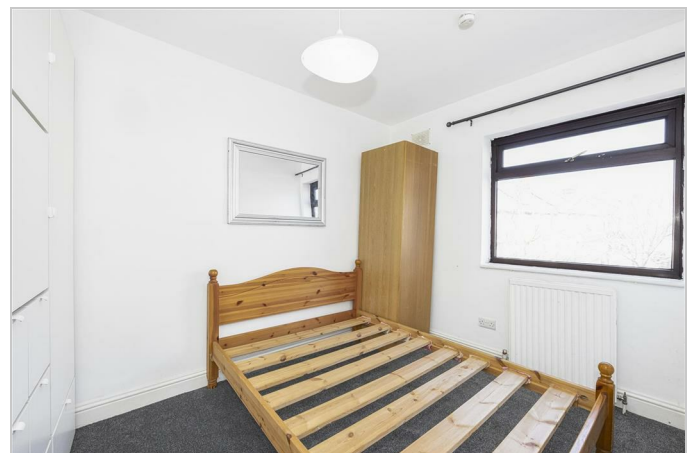


Viewing

Please contact our Settle Office on 0208 124 2522 if you wish to arrange a viewing appointment for this property or require further information.

- First Floor Flat
- One Bedroom
- Open Plan Kitchen/Living Area
- Furnished
- Available Now
- Council Tax Band B
- EPC Rating C
- Sq Ft - Sq M

This well-presented first-floor one-bedroom flat offers a practical and cozy layout, ideal for a couple or single occupant. The property features a bright, open-plan kitchen and living area, providing a welcoming space for both relaxing and entertaining. A separate bedroom offers privacy and a retreat, while the thoughtfully designed layout maximizes the use of space throughout. The shower room completes the space.



These particulars, whilst believed to be accurate are set out as a general outline only for guidance and do not constitute any part of an offer or contract. Intending purchasers should not rely on them as statements of representation of fact, but must satisfy themselves by inspection or otherwise as to their accuracy. No person in this firm's employment has the authority to make or give any representation or warranty in respect of the property.