

local
properties

buy • sell • let

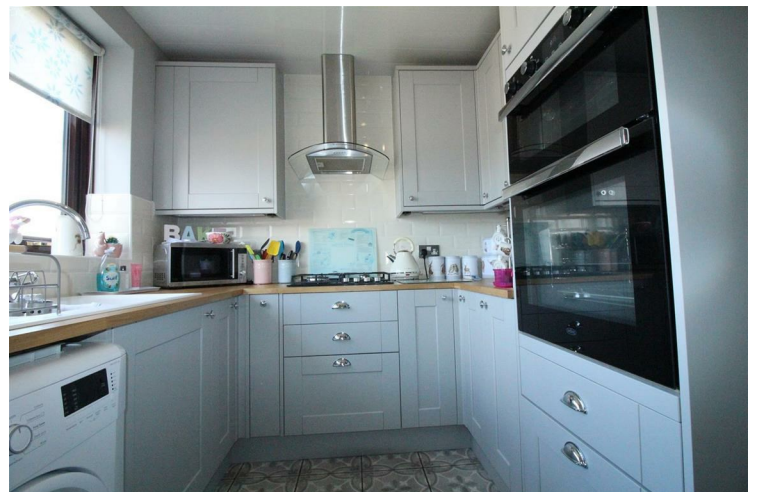


25 Kilpin Hill Lane Dewsbury, WF13 4BG

£179,950

Freehold

***** WELL PRESENTED TWO BEDROOM SEMI DETACHED BUNGALOW - ELEVATED POSITION - MODERN FITTED KITCHEN & BATHROOM - GARDENS & OFF STREET PARKING - NO CHAIN ***** This property has gas central heating and PVCu double glazing and comprises: entrance hall, lounge, fitted kitchen with integrated appliances, two bedrooms (with fitted wardrobes to bedroom one), modern bathroom, useful loft store room accessed via permanent staircase. To the outside, there are gardens to the front and rear and off street parking to the front. Located to all amenities, including Dewsbury & District Hospital, the property is ideally placed for access to neighbouring towns and cities. An early viewing is advised.



• TWO BEDROOM SEMI DETACHED BUNGALOW • GCH & PVCu DG • SPACIOUS LOUNGE
WITH FAR REACHING VIEWS

***** WELL PRESENTED ONE BEDROOM SEMI DETACHED BUNGALOW - ELEVATED POSITION - MODERN FITTED KITCHEN & BATHROOM - GARDENS & OFF STREET PARKING - AVAILABLE NOW ***** This property has gas central heating and PVCu double glazing and comprises: entrance hall lounge, fitted kitchen with some integrated appliances, one bedroom (with fitted wardrobes to bedroom one), dining room, modern bathroom, useful loft store room accessed via permanent staircase. To the outside, there are gardens to the front and rear and off street parking to the front. Located close to all amenities, including Dewsbury & District Hospital, the property is ideally placed for access to neighbouring towns and cities.

ENTRANCE HALL

Laminate flooring. Door to side. Radiator.

LOUNGE

15'0" x 11'0"

Fireplace surround with cast iron effect electric stove. Wall light points. Coving to ceiling. Laminate flooring. Window to front. Radiator.

KITCHEN

9'0" x 7'0"

With base and wall units incorporating composite sink. Gas hob, electric double oven and extractor hood. Integrated fridge freezer. Automatic washing machine. Tiled splashbacks and ceramic tiled floor. Window to front. Vertical radiator.

BEDROOM ONE

13'0" x 9'0"

With fitted wardrobes to one wall. Window to rear. Radiator.

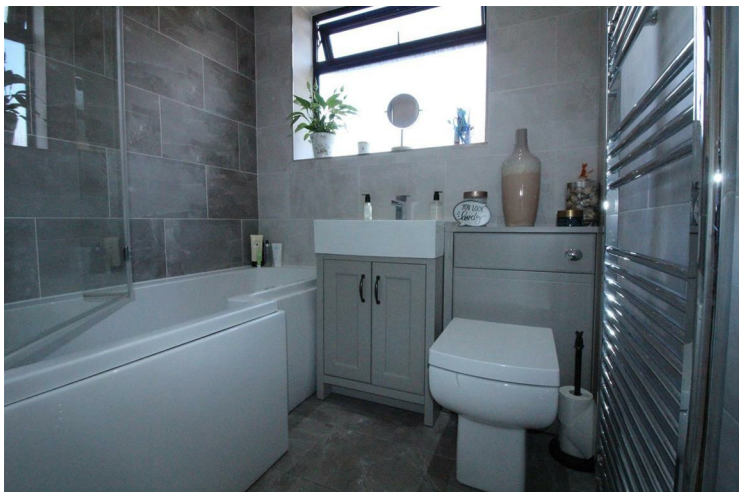
DINING ROOM

11'0" x 9'0"

Laminate flooring. Stairs to boarded loft. French doors to rear. Radiator.

BATHROOM

Fully tiled with three piece suite comprising: bath with shower over and screen, vanity wash hand basin, low flush wc. Ceramic tiled floor. Inset spotlights. Heated towel rail. Window to side.



- MODERN KITCHEN WITH INTEGRATED APPLIANCES • FITTED WARDROBES TO BEDROOM ONE
- ONE

BOARDED LOFT

16'0" x 12'0"

Window to side. Radiator.

EXTERIOR

Lawned garden to the front of property with flowerbeds having a selection of plants and shrubs. Enclosed rear garden on four levels with paved patio area, lawn, gravelled areas and greenhouse. Off street parking for two cars to the front of property.

DIRECTIONS

From Dewsbury Town Centre proceed up Halifax Road for some distance and go straight ahead at the traffic lights by The Butcher's Arms Public House. Kilpin Hill Lane is the third turning on the left hand side where number 25 will be found on the left hand side, signified by our For Sale board.



- USEFUL BOARDED LOFT ROOM • GARDENS FRONT & REAR • OFF STREET PARKING FOR TWO CARS • EPC - D • NO CHAIN

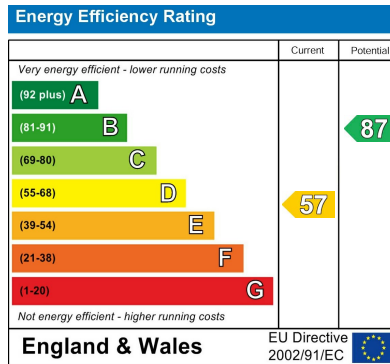




Additional Information

Local Authority - Kirklees Council
Council Tax - Band B
Viewings - By Appointment Only

Floor Area - 0.00 sq ft
Tenure - Freehold



Agents Note: Whilst every care has been taken to prepare these particulars, they are for guidance purposes only. All measurements are approximate and are for general guidance purposes only and whilst every care has been taken to ensure their accuracy, they should not be relied upon and potential buyers/tenants are advised to recheck the measurements

Birstall Lettings
 Midland Bank Chambers
 Smithies Lane
 Birstall
 Batley
 West Yorkshire
 WF17 9EB

01924 474456
info@localproperties.net
<http://www.localproperties.net/>

