

ANTHONY JAMES MANSEY

Residential Sales & Lettings



Linkfield Road

Isleworth, TW7 6QJ

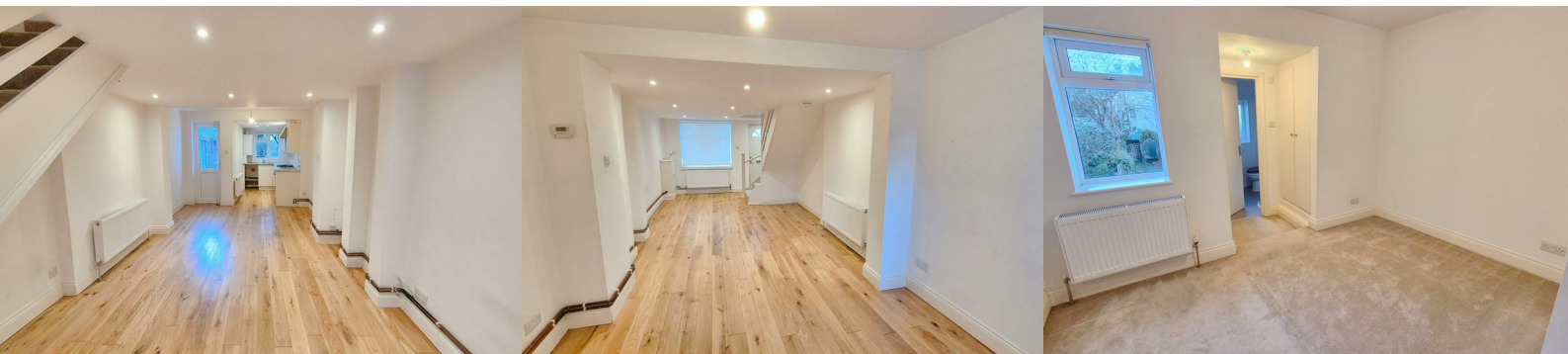
£2,200 Per Month



Nestled on the charming Linkfield Road in Isleworth, this delightful two-bedroom terraced house offers a perfect blend of comfort and convenience. Upon entering, you are welcomed into a spacious reception room that flows seamlessly into a well-appointed kitchen, creating an inviting atmosphere ideal for both relaxation and entertaining.

The property boasts two generously sized bedrooms, providing ample space for rest and personalisation. With two bathrooms, including modern fixtures, the home ensures that morning routines are both efficient and enjoyable.

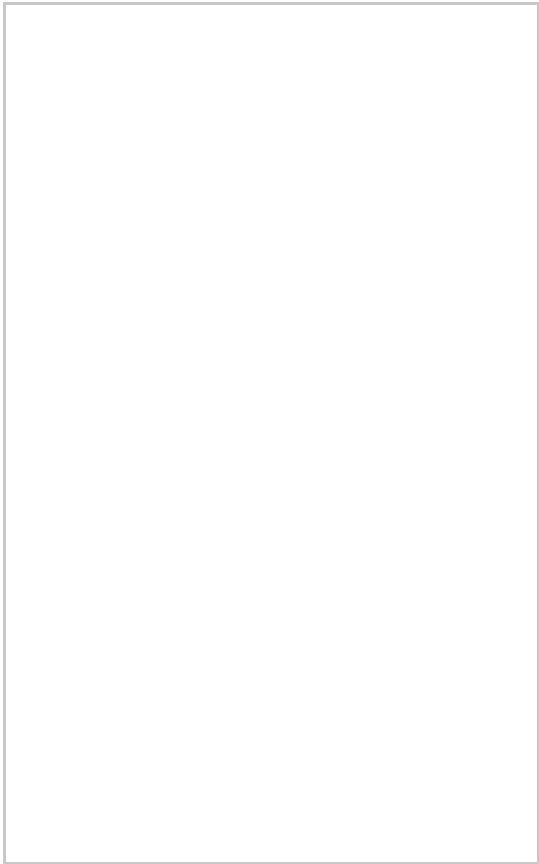
One of the standout features of this residence is its proximity to Isleworth station, making it an excellent choice for commuters seeking easy access to central London. The surrounding area is rich with local amenities, parks, and schools, catering to a variety of lifestyles.



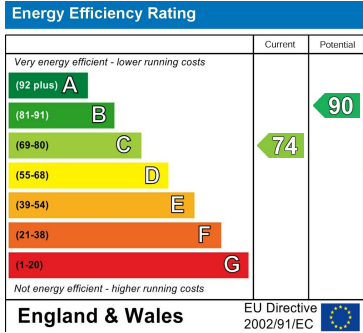
Area Map



Floor Plans



Energy Efficiency Graph



These particulars, whilst believed to be accurate are set out as a general outline only for guidance and do not constitute any part of an offer or contract. Intending purchasers should not rely on them as statements of representation of fact, but must satisfy themselves by inspection or otherwise as to their accuracy. No person in this firms employment has the authority to make or give any representation or warranty in respect of the property.