

222 Verne Road , North Shields, NE29 7DR

** CHAIN FREE ** FREEHOLD ** THREE BEDROOM MID-TERRACE HOUSE ** GREAT FIRST BUY **

** CLOSE TO LOCAL AMENITIES, SCHOOLS AND MAJOR ROAD LINKS ** POPULAR LOCATION **

** ON STREET PARKING ** FRONT AND REAR GARDENS ** COUNCIL TAX BAND A **

** ENERGY RATING C **

Offers Over £175,000

222 Verne Road

, North Shields, NE29 7DR



- Chain Free
- Freehold
- Three Bedroom Mid- Terrace House
- Close to Local Amenities, Schools and Major Road Links
- Great First Time Buy
- Popular Location
- Front and Rear Gardens
- Energy Rating C
- Council Tax Band A

Material Information

Entrance

Hallway

Lounge

14'6" x 13'6" (4.43 x 4.13)

Kitchen

19'9" x 9'6" max (6.04 x 2.90 max)

Landing

WC

5'3" x 2'6" (1.62 x 0.78)

Bathroom

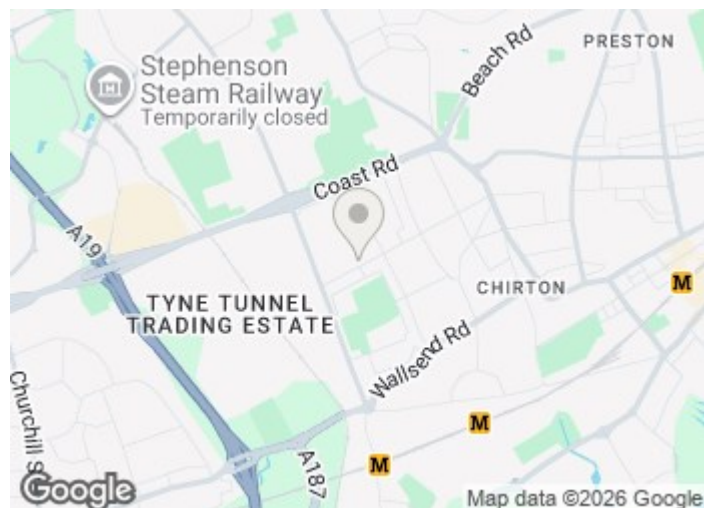
5'4" x 4'11" (1.63 x 1.52)

Bedroom 1

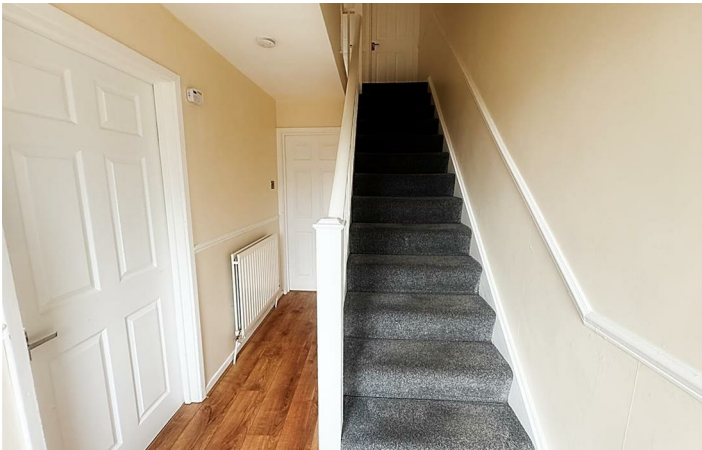
Bedroom 2

Bedroom 3

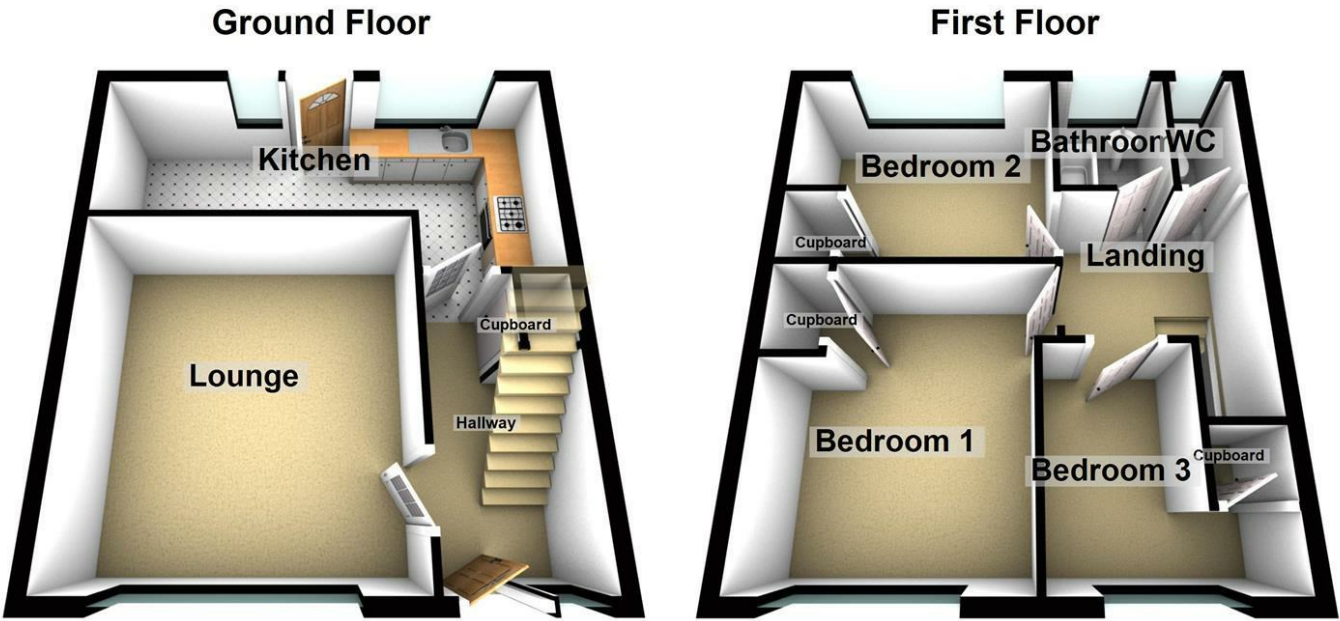
External



Directions



Floor Plan



These particulars, whilst believed to be accurate are set out as a general outline only for guidance and do not constitute any part of an offer or contract. Intending purchasers should not rely on them as statements of representation of fact, but must satisfy themselves by inspection or otherwise as to their accuracy. No person in this firms employment has the authority to make or give any representation or warranty in respect of the property.

Energy Efficiency Rating		
	Current	Potential
Very energy efficient - lower running costs		
(92 plus) A		
(81-91) B		86
(69-80) C	72	
(55-68) D		
(39-54) E		
(21-38) F		
(1-20) G		
Not energy efficient - higher running costs		
England & Wales	EU Directive 2002/91/EC	