



Glenthorne Road, W6

£1,250,000

A wonderful three bedroom house on the border of Brackenbury Village sold with no chain.

It has high ceilings over both floors and the quiet is enhanced by the triple glazed doors and tilt and turn windows that were imported from Austria in matching engineered oak as the engineered oak floors that run throughout, it has water underfloor heating downstairs creating a cohesive and welcoming space. The kitchen island and counter top is granite imported from the Italian mountains. The newly fitted bathroom also has electric underfloor heating and the loft is fully insulated and majority boarded so excellent storage.

Features

- Three Bedrooms
- Freehold House
- Garden
- Immaculately Presented
- Off-Street Parking
- Rear Access



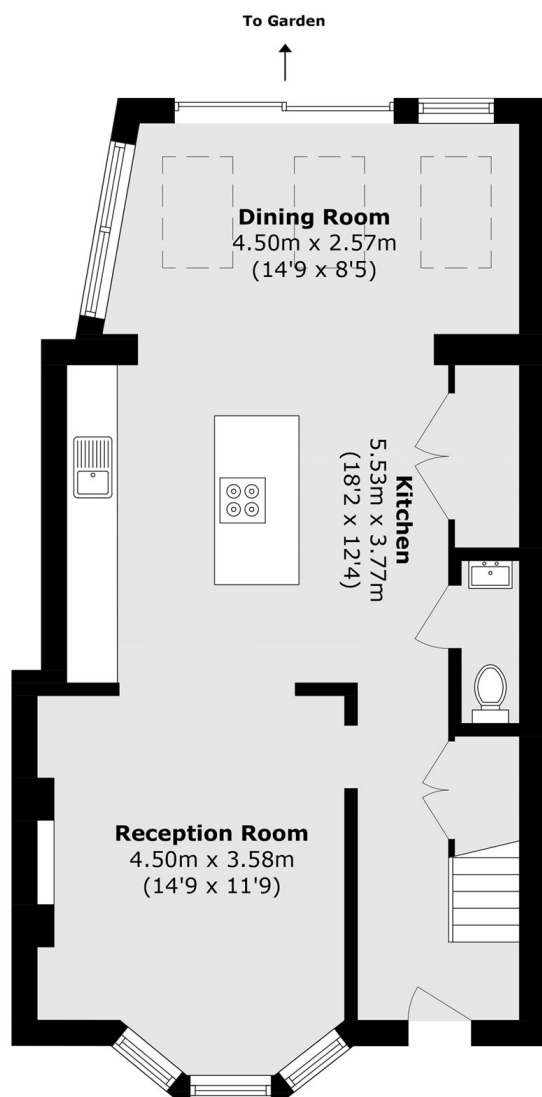
Glenthorne Road, W6

The outdoor space is quiet as it backs on to Redmore road, and has secure double gates. The rear access can be used for off street parking and the premium underlay under the faux grass allows it to rebound and is perfect for children to play on, or adults to relax on. There is a small storage shed as well as a larger bespoke outbuilding storage with sun terrace with engineered decking requiring no maintenance. The mature planting ensures year round interest with stunning cherry blossom and roses seasonally and outdoor architectural lighting. The laurel hedge at the front of the home is also a very effective low maintenance screening to the road at the front of the property as well as the home benefitting from being slightly set back from the road.

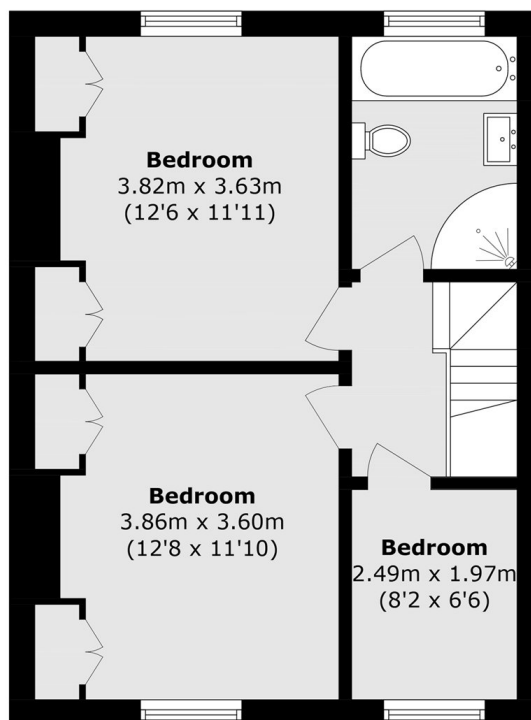
Glenthorne Road is well located for local schools, shops, restaurants and transport links, including Ravenscourt Park Tube and Hammersmith Tube Station.



Glenthorne Road, London, W6



Ground Floor



First Floor

Total area (approx.): 102.5 sq. m (1103.3 sq. ft)