

Calstock Road, Gunnislake, PL18

Guide Price £140,000

🛏 3 🚗 1 🚗 1



A spacious three-bedroom cottage, located within a popular village in the Tamar Valley. Requiring modernisation throughout, the property presents an excellent opportunity for first-time buyers, investors or those seeking a renovation project. Offered to the market with no onward chain, the property further benefits from off-road parking, a garden and stunning views.

The property is located in Gunnislake, within easy reach of neighbouring villages St Ann's Chapel and Drakewalls. Local amenities include a convenience store, post office, doctor's surgery, primary school, pubs, and a train station with regular services to and from Plymouth.

Key Features

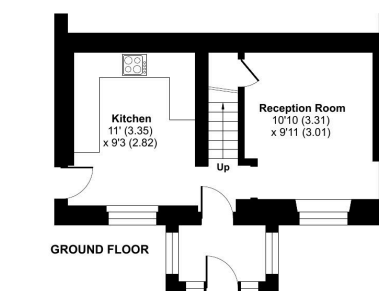
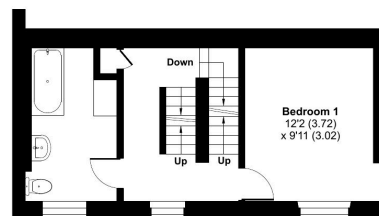
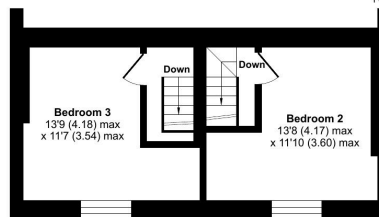
- TO ARRANGE A VIEWING PLEASE QUOTE BL0650
- Three Double Bedrooms
- Requires Modernisation Throughout
- Stunning Views
- Popular Village Location
- Semi-Detached Cottage
- No Onward Chain
- Off-Road Parking
- Garden
- Freehold



Calstock Road, Gunnislake, PL18

Approximate Area = 928 sq ft / 86.2 sq m

For identification only - Not to scale



Floor plan produced in accordance with RICS Property Measurement Standards incorporating International Property Measurement Standards (IPMS2 Residential). ©richcom 2025. Produced for Ben Estates TA Ben Langton Powered by exp. REF: 1419514