



The Circle

Queen Elizabeth Street, SE1

£2,000 pcm

A 2 double bedroom, 2 bathroom apartment located within this prestigious Shad Thames development. The property boasts double height ceilings, wood flooring, floor to ceiling windows overlooking the communal gardens and a private balcony.



The Circle

Queen Elizabeth Street, SE1

- Spacious two bedroom apartment
- 24 hour concierge and lift
- Double height ceilings
- Large balcony
- Wood floors throughout
- Private balcony

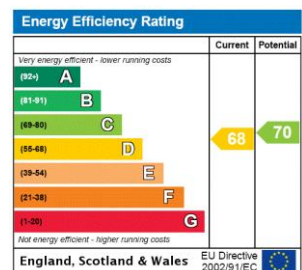


A 2 double bedroom, 2 bathroom apartment located within this prestigious Shad Thames development. The property boasts double height ceilings, wood flooring, floor to ceiling windows overlooking the communal gardens, a private balcony and 24 hour porter.

Shad Thames is a unique area steeped in history and character situated along the south side of the River Thames. The area is home to London's most iconic landmark, Tower Bridge and is within the vicinity of many attractions such as The Shard, Tate Modern and Tower of London. Shad Thames boasts a variety of bars and restaurants and is a short walk to the delights of Bermondsey Street, Maltby Street & Borough markets. Although The City is within walking distance the area is well connected with excellent transport links via London Bridge & Tower Hill stations as well as the river taxi.

Tenure: To be advised
Furnished

Additional tenant charges apply (fees apply to non-AST tenancies only)
 Tenancy Agreement Fee: £300
 References per Tenant/Guarantor: £60
 Inventory check (approx. £100 – £250 inc. VAT)
chestertons.com/property-to-rent/applicable-fees

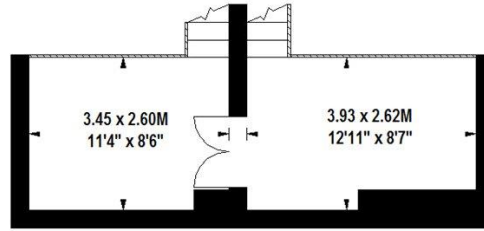


Chestertons Tower Bridge Lettings

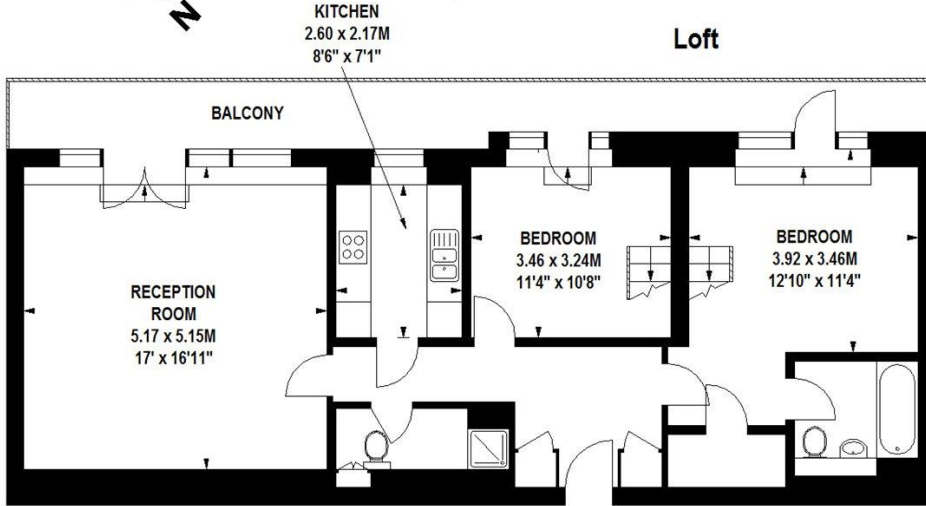
220 Tower Bridge Road
 Tower Bridge
 London
 SE1 2UP
lettings.towerbridge@chestertons.com
 02073576911
chestertons.com

The Circle, SE1

Approximate gross internal area
101 sq m / 1087 sq ft



Loft



Fourth Floor

Floor Plan produced for Chestertons by Mays Floorplans © . Tel 020 3397 4594
Illustration for identification purposes only, not to scale
All measurements are maximum, and include wardrobes and window bays where applicable

