



Bulwer Street, W12

£565 Per week

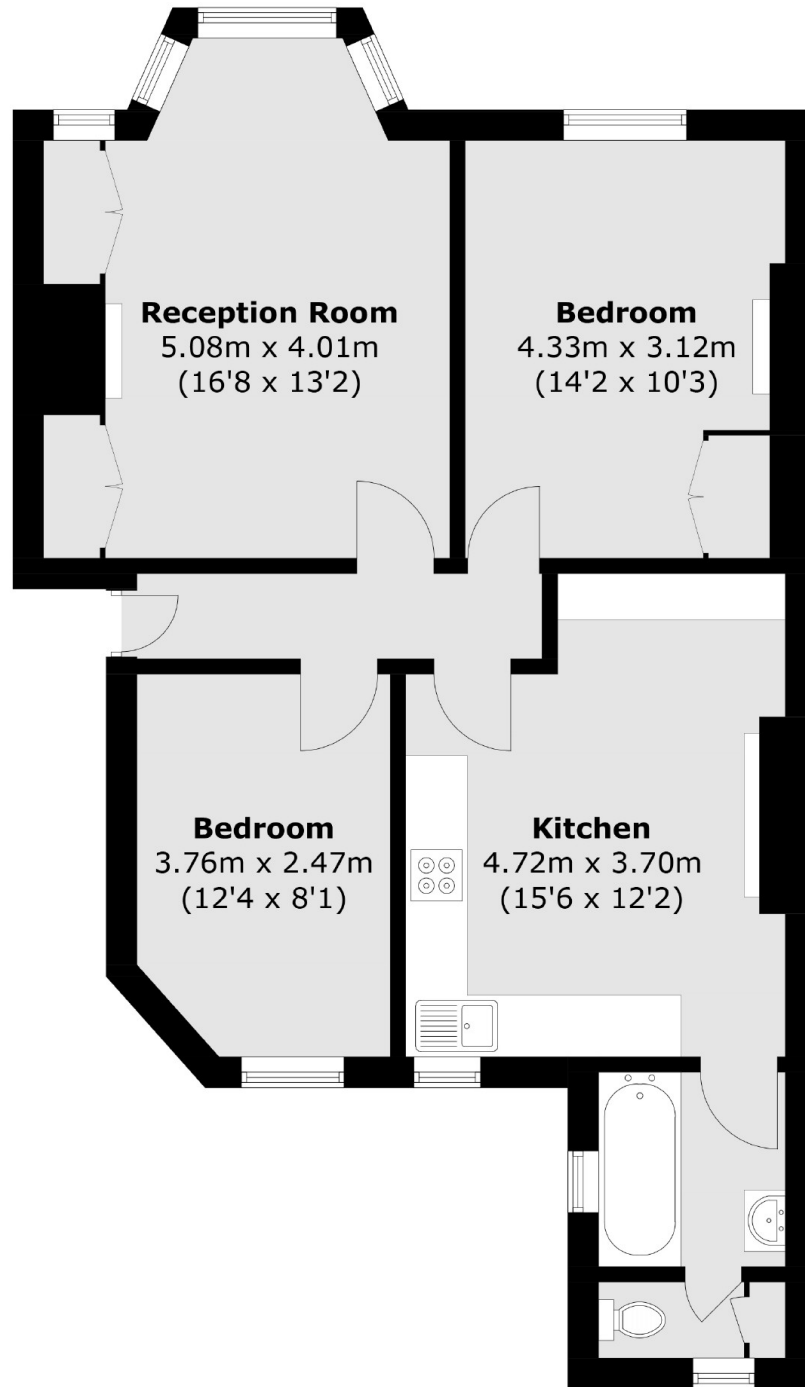
A large two double bedroom flat located on the second floor of a prestigious period block. The flat has a large separate eat in kitchen and a communal patio garden.

The flat is located under 0.2 miles from both Shepherds Bush and Shepherds Bush Market and close to Westfield Shopping Centre

Features

Period Flat
Large Two Bedroom Flat
Separate Eat In Kitchen
Wood Floors Throughout
Central Location
Communal Patio Garden

Bulwer Street,
London, W12



Total area (approx.): 67.3 sq. m (724.4 sq. ft)

Dexters

Shepherds Bush and Brook Green
53 Shepherds Bush Green
London
W12 8PS
Lettings
020 8723 8899

Energy Rating: D. We aim to make our particulars both accurate and reliable. However they are not guaranteed; nor do they form part of an offer or contract. If you require clarification on any points then please contact us, especially if you're traveling some distance to view. Please note that appliances and heating systems have not been tested and therefore no warranties can be given as to their good working order.

 **RICS** | Regulated
Estate Agent
and Letting Agent

dexters.co.uk