



Goostrey  
Blackberry Gardens

  
IRLAM  
*of Knutsford*



# Goostrey, CW4 8FU

## Blackberry Gardens

Offers £550,000



### The Property

This immaculately presented four-bedroom, three-bathroom detached family home has been much refurbished and improved in recent years by the current owners to now provide light, spacious and flexible living accommodation in a contemporary style. Particular mention must be made of the open plan Dining Kitchen with fitted appliances and French Doors to the garden, the principal bedroom suite with fitted wardrobes and en-suite shower room as well as the generous guest bedroom with en-suite shower room and the fantastic presentation throughout.

Located in an ever popular position, forming a small development of similar properties on the edge of the village, close to all local amenities and schooling whilst being ideally positioned for all major network links to the Northwest and beyond.

The property is approached over a tarmac, double width driveway, providing ample of road parking, leading to the integral garage and front entrance, flanked by open lawned garden with

feature planting. The rear gardens are a lovely feature of the property, being generous in proportions with a private, open aspect. Laid to lawn in the main incorporating well stocked borders containing a wealth of different plants and foliage with flagged and decked patio areas, accessed via the French doors off the Dining Kitchen, providing ideal opportunity for alfresco dining and enjoying the lovely aspect, all fully enclosed by wood lap fencing.

### Directions

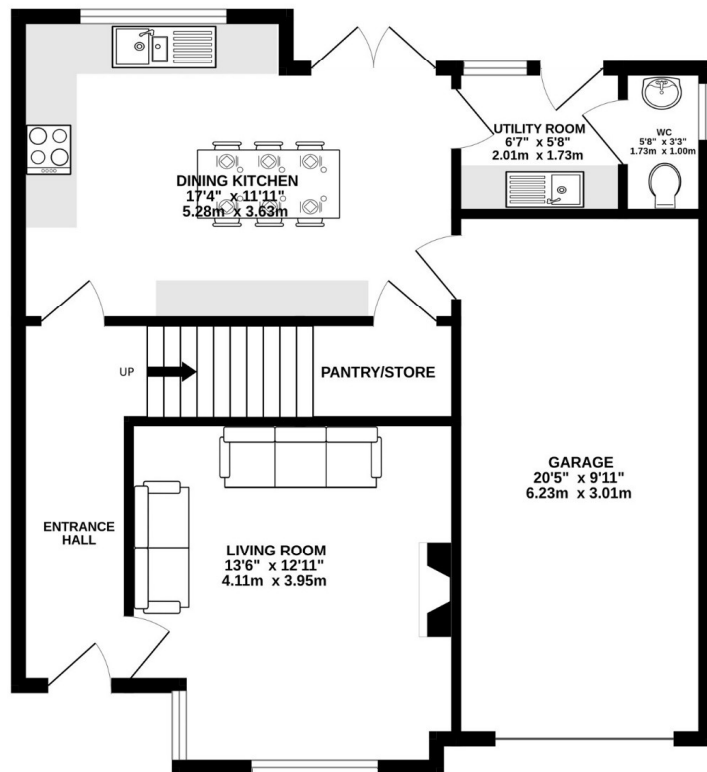
From Knutsford Town Centre proceed along Toft Road (A50) which turns into Holmes Chapel Road for approximately 5.5 miles passing through Allstock. Turn left into New Platt Lane and take the left turn into Harrison Drive to its end and then turn right into Blackberry Gardens.

- Beautifully presented detached property situated in a lovely semi-rural location
- Spacious & flexible living accommodation
- Dining kitchen with integrated appliances & separate utility room
- Downstairs WC
- Four double bedrooms, 2 with en-suite
- Large double driveway and garage
- Good-size rear garden

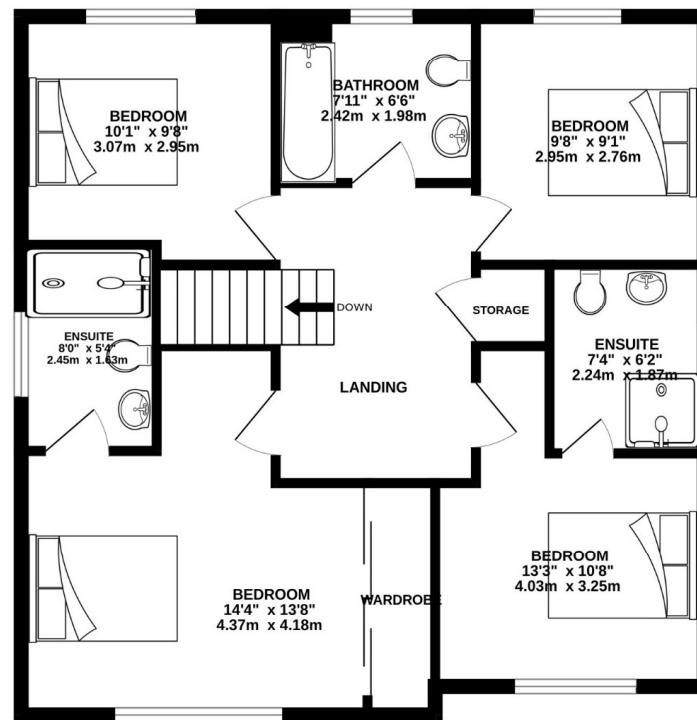
**Postcode** – CW4 8FU  
**Tenure** – Freehold  
**Local Authority** – Cheshire West  
**Council Tax** – Band E  
**EPC** - B



**GROUND FLOOR**  
725 sq.ft. (67.4 sq.m.) approx.



**1ST FLOOR**  
723 sq.ft. (67.1 sq.m.) approx.



**TOTAL FLOOR AREA : 1448 sq.ft. (134.5 sq.m.) approx.**

Whilst every attempt has been made to ensure the accuracy of the floorplan contained here, measurements of doors, windows, rooms and any other items are approximate and no responsibility is taken for any error, omission or mis-statement. This plan is for illustrative purposes only and should be used as such by any prospective purchaser. The services, systems and appliances shown have not been tested and no guarantee as to their operability or efficiency can be given.

Made with Metropix ©2025

103 King Street, Knutsford, Cheshire, WA16 6EQ

01565 654 000

E: [info@irlamsestateagents.co.uk](mailto:info@irlamsestateagents.co.uk)

[www.irlamsestateagents.co.uk](http://www.irlamsestateagents.co.uk)

I1021\_ Printed by Ravensworth 01670 713330

Irlams (Estate Agents) Ltd for themselves and for the vendors or lessors of this property whose agents they are give notice that:

- (a) The particulars are set out as a general outline only for the guidance of intending purchasers or lessees, and do not constitute, nor constitute part of, an offer or contract;
- (b) All descriptions, dimensions, references to condition and necessary permissions for use and occupation, and other details are given in good faith and are believed to be correct but any intending purchasers or lessees should not rely on them as statements or representations of fact, but must satisfy themselves by inspection or otherwise as to the correctness of each of them;
- (c) No person in the employment of Irlams (Estate Agents) Ltd has any authority to make or give any representation or warranty whatsoever in relation to this property.
- (d) We believe the information above to be accurate at the point it was obtained however you may wish to make a final check with your Solicitor or with us in respect of anything above you feel crucial before you proceed with the purchase of this property.

