

Buy. Sell. Rent. Let.


lovelle



Durban Road, Grimsby



3



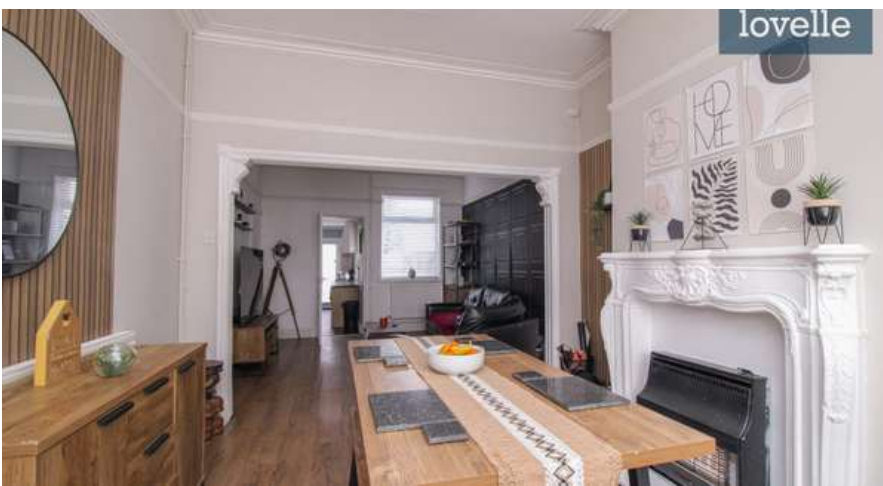
1



2

When it comes to
property it must be


lovelle



£75,000



An ideal investment opportunity is three bedroom mid terrace house located in Grimsby, currently LET on an AST.

Key Features

- Mid-Terraced House
- Three Bedrooms
- Two Reception Rooms
- Kitchen & Bathroom
- uPVC DG & GCH
- Town Centre
- EPC rating TBC
- Tenure: Freehold



ATTENTION INVESTORS ! Lovelle offer to market this spacious three bedroom mid-terraced house, located in a well established area of Grimsby Town Centre boasting ease of access to a vast range of local amenities. Currently LET on an assured shorthold tenancy producing £450 per calendar month.

The accommodation is well presented throughout with two reception rooms and kitchen to the ground floor, three bedrooms and bathroom to the first floor. Externally there is a front and rear garden. The property also benefits from uPVC double glazing and gas central heating throughout.

Measurements

Reception Room 1 3.28m X 4.06m

Reception Room 2 3.37m X 3.45m

Kitchen 2.58m X 5.94m

Bedroom 1 4.30m X 3.48m

Bedroom 2 3.62m X 2.56m

Bedroom 3 3.56m X 2.61m

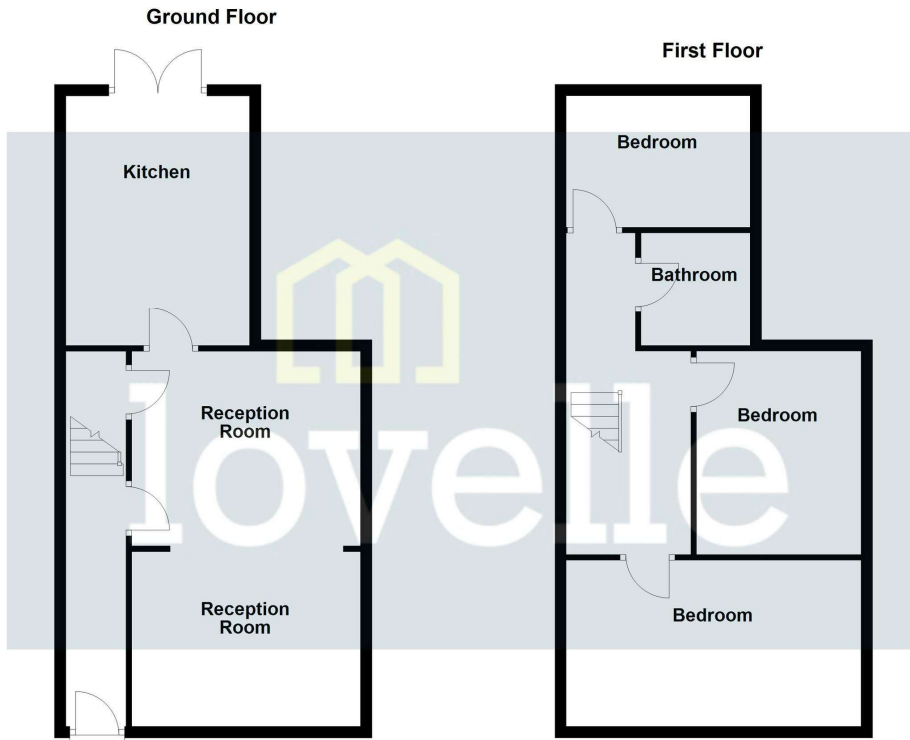
Bathroom 2.29m X 1.68m

Disclaimer

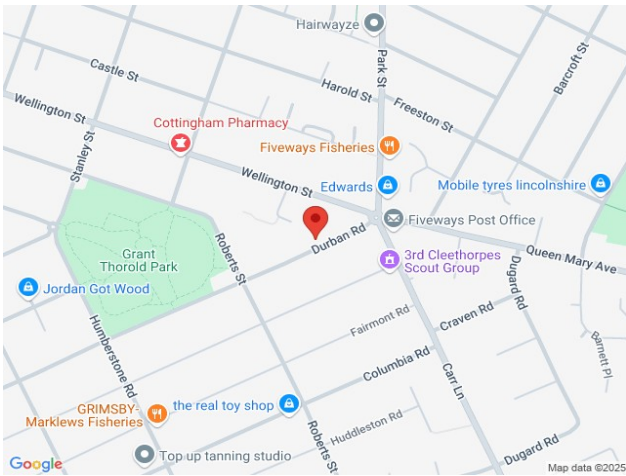
We endeavour to make our sales particulars accurate and reliable, however, they do not constitute or form part of an offer or any contract and none is to be relied upon as statements of representation or fact. Any services, systems and appliances listed in this specification have not been tested by us and no guarantee as to their operating ability or efficiency is given. All measurements have been taken as a guide to prospective buyers only, and are not precise. If you require clarification or further information on any points, please contact us, especially if you are travelling some distance to view.

Mobile and broadband

It is advised that prospective purchasers visit checker . ofcom . org . uk in order to review available wifi speeds and mobile connectivity at the property.



Please be advised that the floor plan is not drawn to scale and items such as window placements and bathroom/kitchen fixtures are not accurate, the plans are not to be relied upon and are to be used for illustrative purposes only.
Plan produced using PlanUp.



When it comes to **property**
it must be


lovelle

01472 251918

grimsby@lovelle.co.uk

