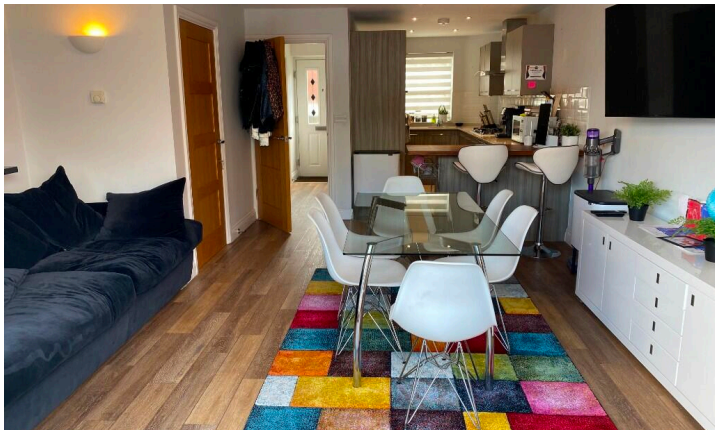




1/11



**£2,750 pcm**

£635 pw

Added yesterday

MARKETED BY

**Ideal Location Property Limited, Chelmsford**



Tindal House Tindal Square,  
Chelmsford, CM1 1EH

### Letting details

Let available date: 01/05/2026    Deposit: £3,173

Let type: Long term

Furnish type: Furnished or unfurnished, landlord is flexible

Council Tax: Ask agent

**Call agent**

### Request details

---

PROPERTY TYPE

 Terraced

BEDROOMS

 4

BATHROOMS

 3

SIZE

 Ask agent

---

 No floorplan



+7

## Key features

- 4 Bedroom City centre house
- Large kitchen/diner/reception room
- Courtyard garden
- Good condition throughout
- 2 rooms with private ensembles
- Separate lounge
- Gated parking space

## Description

Modern 4 bedroom house situated in the heart of the Old Moulsham area of Chelmsford. The property benefits from two large double bedrooms, both with a private ensuite shower room, two further bedrooms with use of another bathroom.

The ground floor comprises of an entrance hallway, additional guest WC, with a door through to a very large open plan kitchen with breakfast bar, a dining and reception area with bi-fold doors opening to the courtyard garden. There is another sitting room situated on the 1st floor of the house.

We expect lots of interest in this property, so early viewing is advised.

No agents please.

COUNCIL TAX 

Ask agent

PARKING 

Yes

GARDEN 

Yes

ACCESSIBILITY 

Ask agent



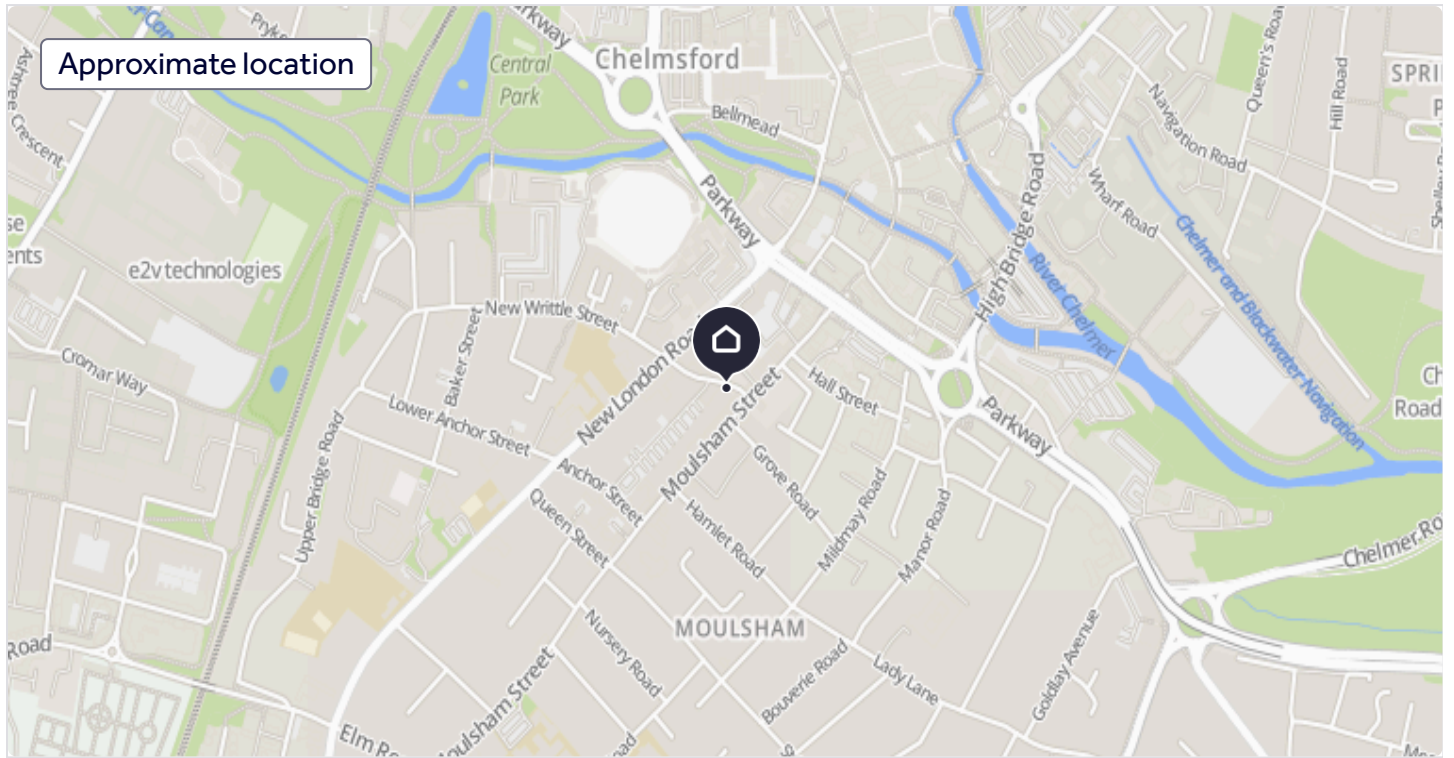
Energy performance certificate - ask agent



Utilities, rights & restrictions



# 75 New Writtle Street, Chelmsford, Essex, CM2



Add an important place to see how long it'd take to get there from our property listings.

 \_\_ mins driving to your place

Add a place



Broadband speed



## About Ideal Location Property Limited, Chelmsford

Tindal House Tindal Square, Chelmsford, CM1 1EH



[View our properties to rent](#)

## Notes

 These notes are private, only you can see them.

DO

Add your thoughts on this property...

**Disclaimer** - Property reference 75NewWrittleStreet. The information displayed about this property comprises a property advertisement. Rightmove.co.uk makes no warranty as to the accuracy or completeness of the advertisement or any linked or associated information, and Rightmove has no control over the content. This property advertisement does not constitute property particulars. The information is provided and maintained by **Ideal Location Property Limited, Chelmsford**. Please contact the selling agent or developer directly to obtain any information which may be available under the terms of The Energy Performance of Buildings (Certificates and Inspections) (England and Wales) Regulations 2007 or the Home Report if in relation to a residential property in Scotland.

\*This is the average speed from the provider with the fastest broadband package available at this postcode. The average speed displayed is based on the download speeds of at least 50% of customers at peak time (8pm to 10pm). Fibre/cable services at the postcode are subject to availability and may differ between properties within a postcode. Speeds can be affected by a range of technical and environmental factors. The speed at the property may be lower than that listed above. You can check the estimated speed and confirm availability to a property prior to purchasing on the broadband provider's website. Providers may increase charges. The information is provided and maintained by **Decision Technologies Limited**.

\*\*This is indicative only and based on a 2-person household with multiple devices and simultaneous usage. Broadband performance is affected by multiple factors including number of occupants and devices, simultaneous usage, router range etc. For more information speak to your broadband provider.

Map data ©[OpenStreetMap](#) contributors.

---

## Download the Rightmove app



Resources



---

Search



---

Locations



---

Rightmove



---

Professional



---

[Site map](#)

[Help](#)

[Cookies](#)

[Safety and Security](#)

[Terms of Use](#)

[Privacy Policy](#)

New updates



Copyright © 2000-2026 Rightmove Group Limited. All rights reserved. Rightmove prohibits the scraping of its content. You can find **further details here**.