



## Silverworks Close, NW9

£425,000

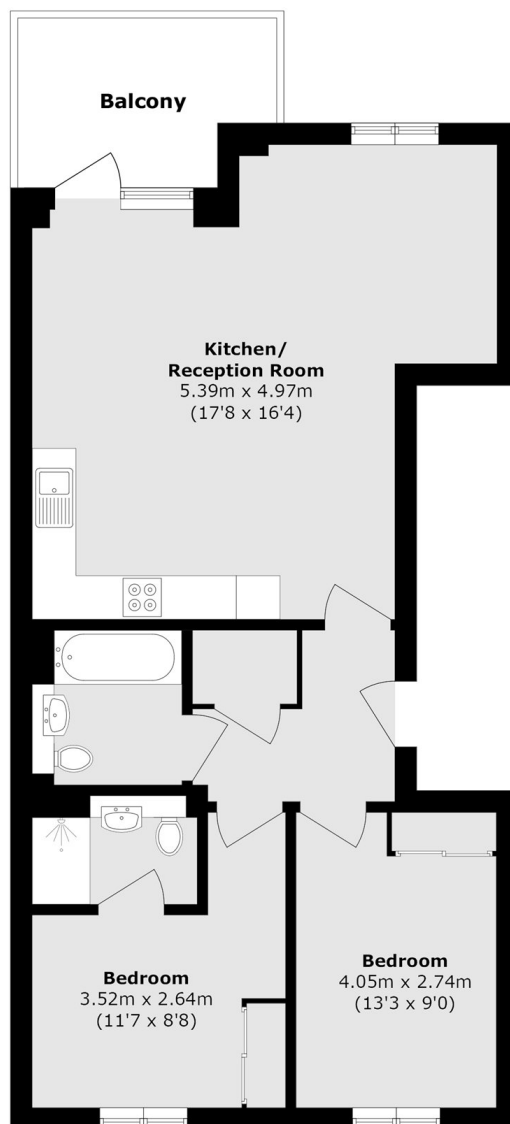
A spacious two bedroom two bathroom property on the first floor of this modern development. The property features a large open plan kitchen / reception room, secure underground parking and is being sold chain free.

Silverworks Close is located close to supermarkets such as Asda and Morrisons as well as Bang Bang Oriental Food Hall, multiple transport links including bus routes and Colindale station (Northern Line).

### Features

- Modern Development
- Two Bedroom
- Two Bathroom
- First Floor
- Secure Underground Parking
- Chain Free

# Silverworks Close, London, NW9



Total area (approx.): 72.9 sq. m (784.6 sq. ft)

Balcony area (approx.): 7.2 sq. m (77.5 sq. ft)