



[www.jeffreygross.co.uk](http://www.jeffreygross.co.uk)

CARDIFF

VALE

CAERPHILLY

BRISTOL



*Muller Road*

HORFIELD



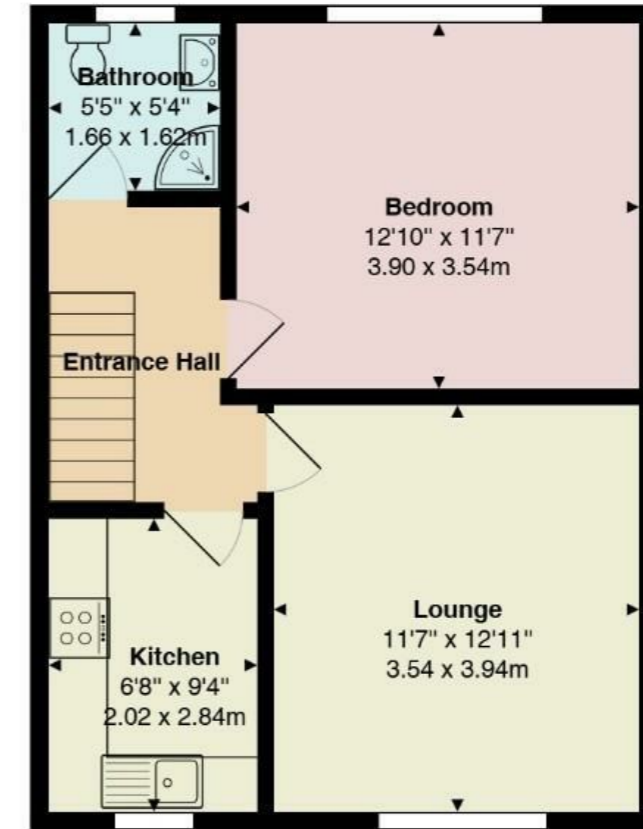
Comments by Ms Olivia Melville-Brown



**Property Specialist**  
**Ms Olivia Melville-Brown**  
Branch manager

[o.melvillebrown@thepropertyoutlet.com](mailto:o.melvillebrown@thepropertyoutlet.com)

Muller Road, Horfield, Bristol, BS7 9RF



Total Area: 470 ft<sup>2</sup> ... 43.7 m<sup>2</sup>

All measurements are approximate  
and for display purposes only

Comments by the Homeowner





# Muller Road

*Horfield, Bristol, BS7 9RF*

Offers In The Region Of

**£195,000**



1 Bedroom(s)



1 Bathroom(s)



473.61 sq ft



Contact our  
***Property Outlet Branch***

0117 935 4565

Nestled on Muller Road in the vibrant area of Horfield, Bristol, this charming one-bedroom flat offers a delightful living space perfect for individuals or couples seeking comfort and convenience. The property features a well-proportioned reception room that invites natural light, creating a warm and welcoming atmosphere.

The flat comprises a spacious bedroom, ideal for relaxation and rest, along with a functional kitchen that provides all the essentials for culinary enthusiasts. The bathroom is thoughtfully designed, ensuring both practicality and comfort.

With its prime location, residents will enjoy easy access to local amenities, including shops, cafes, and parks, making it an ideal choice for those who appreciate a lively community. Public transport links are also readily available, providing seamless connections to the wider city of Bristol.

This lovely one-bedroom flat is a perfect opportunity for anyone looking to embrace a modern lifestyle in a sought-after area. Don't miss the chance to make this delightful property your new home.



**Kitchen 7'1" x 9'11" (2.17 x 3.04)**

**Lounge 9'6" x 12'10" (2.91 x 3.93)**

**Hallway 7'1" x 10'0" (2.18 x 3.06)**

**Bedroom 12'9" x 11'7" (3.90 x 3.55)**

**Bathroom 5'5" x 5'4" (1.66 x 1.63)**

#### **Tenure**

We have been advised by your client that this property is a share of a freehold, this is to be confirmed by your legal advisor.

#### **Charges**

#### **Council Tax Band**

Band A

#### **Lease Details**

#### **School Catchment**

Primary - Glenfron Primary School - BS5 6TY  
Secondary - Fairfield High School - BS7 9NL

#### **Additional Information**

C A R D I F F

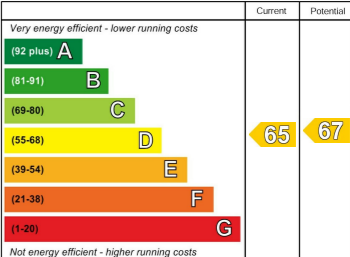
V A L E

C A E R P H I L L Y

B R I S T O L



Energy Efficiency Rating



England & Wales

EU Directive 2002/91/EC

